

THE SHAWNEE STORY

STARRING

THE SENIORS

HOW
SEE
HEL4
OF '56



SEE
PICTURES
OF STAR
WHEN
THEY
WERE
CHILDREN

FILMED
AS IT
HAPPENED
—
9 MONTHS
IN
PRODUCTION
—



Winchester Board of Education planning building program for the entire school system, SEATED, Left to Right: Vice-Chairman, T. L. Beckham; Chairman, L. T. Shepherd and Leo Cruse. STANDING: J. J. Hodgkin, Taylor Lowry and Secretary Frank J. Ogden.



FRANK J. OGDEN
Superintendent



MISS BROOKS
Secretary



MR. JONES
Principal

SENIORS



MRS. R. R. CRAFT
Sponsor



MRS. ELIZABETH WATSON
Sponsor



CLASS OFFICERS

Left to Right: H. H. Cravens, Treasurer; Beverley Jouett, Publicity Chairman; Emma Jane Crace, Vice-President; Margaret McCready, Secretary; Paul Rainey, President.



DALLAS RAY ABNEY
Pep Club 10, 11, 12; Hobby Club 9,
10; Senior Play.



GERALD WAYNE ADAMS
Basketball 8, 10, 11, 12; Football 9,
10, 11, 12; Hobby Club 9; Sports-
man's Club 8, 9; Junior Play Cast;
School Paper 11; F. H. A. 12; Seni-
or Play.



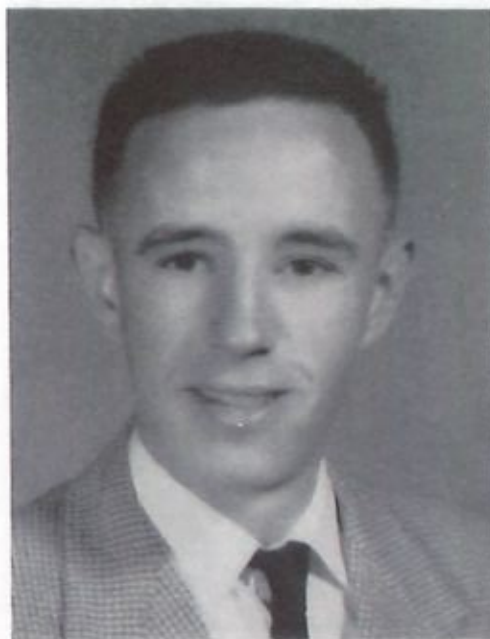
BEVERLY ANN ALLSMILLER
Signifer Magni Honoris; Honor Club; Home
Room President 9, 10; Pep Club 10, 11, 12,
Secretary 12; Beta Club 11, 12; Band Sponsor
12; Junior Play Cast 11; Future Teachers 11,
12; Attendant to Miss Papoose 8; Glee Club
9, 10, 11, 12; F. H. A. 9, 10, 11, 12; Songleader
9, 12; Annual Staff 12; Debate 11, 12; N. F.
L. 10, 11, 12; Citizenship Award 9; Student
Council 7, 8, 9, 12; Chemistry Award 11,
Music Festival 11; Little Theater Club 9;
Senior Play Cast.



CAROLYN SUE ALTOM
F. H. A. 9, 10, 11, 12; School Paper
11; Pep Club 10, 11, 12; Tri-Hi-Y
9; Senior Play.



ANNIE FRANCES BRANDENBURG
Pep Club 10, 11, 12; Glee Club 10, 11, 12; F. H. A. 9, 10, 11, 12; Library Club 9, 12; Junior Play Cast; Senior Play.



RONALD WAYNE BAILEY
Hi-Y 9, 10; Basketball 9, 10, 11; F. H. A. 12; Senior Play.



JANET LEE CALHOUN
Transferred from Nashville, Tennessee; Band 10, 11; Pep Club 10, 11, 12; Junior Play Cast 11; N. F. L. 10, 11, 12; Debate 11, 12; Speech 10, 11, 12; F. H. A. 12; Future Teachers 12; Music Festival 10, 11; Senior Play.



MARY DEAN CALLOWAY
Miss Papoose 8; Honor Club; Glee Club 9, 10, 11, 12; B-Team Cheerleader 10, 11; A-Team Cheerleader 12; Pep Club 10, 11, 12; F. H. A. 9, 10, 11, 12, Parliamentarian 10; Future Teachers 12; Class Vice-President 9, 10; Junior Play Cast; Annual Staff 12; School Paper 12; Music Festival 10, 11; Miss First-Down 12; Senior Play Cast; All-State Chorus 12.



JAMES CARTER CHEUVRONT
Football 11, 12; Pep Club 11, 12;
Band 8, 9, 10, 11, 12; F. H. A. 12;
Hobby Club 9; Junior Play Cast;
School Paper 11; Sportsman's Club
8, 9; Senior Play.



PAUL EDWARD CONKWRIGHT
Class Basketball Tournament 9;
Hobby Club 9; Perfect Attendance
Award 11; Senior Play.



EMMA JANE CRACE
Honor Club; Little Theater Club 9; Band 7, 8,
9, 12; Majorette 11, 12; F. H. A. 9, 10, 11,
12, Reporter 12; (State Degree 11); Pep Club
10, 11, 12, Vice-President 12; Future
Teacher 11, 12; Home Room Secretary 9,
10; Class Vice-President 11, 12; Home Room
President 11, 12; Debate 11; N. F. L. 11, 12;
Co-Editor of Annual 12; Glee Club 11;
Junior Play Cast; Girls' State 11; Alternate to
Girls' Nation 11; Citizenship Award 11; Stu-
dent Council 12, President 12; Senior Play.



DORA BEE DEAN CRAVENS
Tri-Hi-Y 9; Band 7, 8, 9, 10, 11, 12;
Music Festival 11; Pep Club 10, 11,
12; School Paper 12; Junior Play
Cast; F. H. A. 9, 10, 11, 12, Parlia-
mentarian 12; Senior Play.



HERBERT HENRY CRAVENS, JR.
Basketball 7; Band 8, 9, 10; Sports-
man's Club 9; Hobby Club 9; Pep
Club 9, 10, 11, 12; Home Room Treas-
urer 9, 10; Junior Play Cast 11;
Home Room Secretary 11, 12; Class
Treasurer 11, 12; Junior Play Cast;
Football 12; Senior Play Cast.



THOMAS WILLOUGHBY CROWE
Hobby Club 10, 11; Class Basket-
ball Tournament 9, 10, 11; Junior
Play; Senior Play.



SHIRLEY MARIE DANIELS
Transferred from St. Agatha Acad-
emy; F. H. A. 11, 12; Future Teach-
ers 11, 12; Junior Play Cast; Pep
Club 12; Senior Play.



BETTY JEAN DIXON
Glee Club 9, 10, 11, 12; F. H. A. 9,
10, 11, 12; Library Club 10, Presi-
dent 10; Pep Club 10, 11, 12; School
Paper 12; Senior Play.



ARVILLA FAYE ELAM
Library Club 9, 12; F. H. A. 10, 11,
12; Pep Club 10, 11, 12; Glee Club
10, 11, 12; Junior Play; Senior Play.



KERNEY STEWART GIBBS
Basketball 7, 8, 9, 10, 11; Football
7, 8, 11; Hobby Club 8, 9; Sports-
man's Club 8, 9; Track Team 9;
Swimming Team 9, 10; Pep Club
11, 12; F. H. A. 12; Senior Play.



BETHEL GREEN
Tri-Hi-Y 9; Glee Club 9, 10, 11, 12;
F. H. A. 9, 10, 11, 12; Pep Club 10,
11, 12; Junior Play; School Paper 12;
Senior Play.



HELEN IRENE GULLET
Transferred from Midway, Ken-
tucky; Senior Play.



NANCY KATHRYN HAGGARD
Library Club 9, 12; Glee Club 9, 10,
11, 12; F.H.A. 9, 10, 11, 12; Pep
Club 10, 11, 12; School Paper 11;
Junior Play; Beta Club 12; Senior
Play.



DALE GREY HALL
Hobby Club 9; Class Basketball
Tournament 9; Perfect Attendance
Award 9, 11; Senior Play.



GEORGE DOVEN HALL
Hobby Club 9; Junior Play 11; F.H.
A. 12; Senior Play.



SUZANNE HENRY CARDWELL
Band 7, 8; Little Theatre Club 9;
Glee Club 9, 10, 11; Pep Club 10,
11, 12; Junior Play Cast; School
Paper 11; Senior Play.



TOM BROCK HENRY
Transferred from K. M. I., Lyndon, Kentucky; Key Club 10, 11; Junior Play Cast; Pep Club 11, 12; Home Room Vice-President 11, 12; Annual Staff 12; Beta Club 12; F. H. A. 12; Future Teachers 12; Senior Play Cast.



JACKIE MC CLURE HISLE
Class Basketball Tournament 9;
Hobby Club 9, 10; Senior Play.



SHIRLEY MASON HOWARD
Transferred from Clark County;
F. H. A. 12; Senior Play.



DOVIE GARNETTA HULL
Glee Club 8, 9, 10, 11, 12; Tri-Hi-Y
9; F. H. A. 9, 10, 11, 12; School
Paper 11; Pep Club 10, 11, 12; Senior
Play.



HAROLD RAY JOHNSON
Hi-Y 9; Glee Club 10; Pep Club 10, 11, 12, President 12; Junior Play Cast; Current Event Award 11, Future Teachers 11, 12; Senior Play Cast; Key Club 12; Annual Staff 12.



BETTIE ANN KING
Honor Club; Glee Club 7, 8, 12; Library Club 9; Perfect Attendance Award 10, 11; School Paper 11; Junior Play; Pep Club 11, 12; Annual Staff 12; Senior Play.



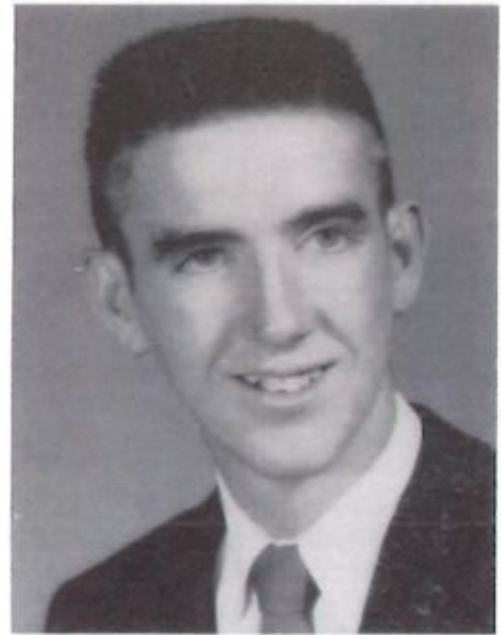
DONNA EARL KAELIN
Transferred from Louisville, Kentucky; Pep Club 10; Majorette 10, 12; Glee Club 10.
Transferred from Clifton Forge, Virginia; Beta Club 11, 12; Junior Play Cast; Future Teachers 12; Senior Play Cast; Viso-Matic Essay Award 11.



BEVERLEY REED JOUETT
Honor Club; Class Vice-President 9; Little Theatre 9; Glee Club 9, 12; F. H. A. 9, 10, 11, 12, Second Vice-President 11; Pep Club 10, 11, 12; Speech Work 10, 11; Debate 11, 12; M. F. L. 10, 11, 12; Junior Play Cast; Future Teachers 11, 12; Annual Staff 12; Beta Club 11, 12; Senior Play; Class Publicity Chairman 12; All State Chorus 12.



DAVID ALLAN KING
Basketball 7, 8; Band 7; Hobby Club
8, 9; Football 9; Perfect Attendance
Award 10; Baseball 10, 11, 12; Junior
Play; F. H. A. 12; Senior Play.



WILLIAM DOUGLAS MARION
Basketball 7, 8; Football 7; Photog-
raphy Club 9; Student Council 9;
Pep Club 10, 11; Band 7, 8, 9, 10, 11,
12; Junior Play Cast; Drum Major
12; Teen Town President 11, 12;
Student Band Director 12; Senior
Play.



GEORGE F. MASON, JR.
Transferred from Pine Knob, Ken-
tucky; Junior Play; F. H. A. 12; Sen-
ior Play.



JAMES PHELPS WITT
Hobby Club 9, 10; Perfect Attend-
ance Award 10; F. H. A. 12; Junior
Play; Senior Play.



PEGGY JO MILTON
Tri-Hi-Y 9; Glee Club 8; F. H. A. 9,
10, 11, 12; Junior Play Cast; Pep Club
11, 12; School Paper 12; Senior Play.



GEORGE EDWARD NEAL
Basketball Manager 8; Hobby Club
8, 9; Football 9; Junior Play; F. H. A.
12; Senior Play.



MARGARET FRENCH MC CREADY
Honor Club; Little Theatre Club 9; Glee
Club 9, 10; Student Council 9, 12; F. H. A.
9, 10, 11, 12; Reporter 10; Historian 11;
President 12; B-Team Cheerleader 10;
Citizenship Award 10; Pep Club 10, 11, 12;
Class Secretary 10, 11, 12; Music Festival
8, 9, 10, 11, 12; Junior Play Cast; Biology
Award 11; Home Room Vice-President 11;
Future Teachers 11, 12; Beta Club 11, 12;
President 12; Annual Staff 12; Senior Play
Cast.



FRED LANE OLIVER
Honor Club; Hi-Y 9, 10; Perfect At-
tendance Award 9; Pep Club 10, 11,
12; Junior Play; F. H. A. 12; Senior
Play.



ROY CLAY PALMER
Hi-Y 9; Junior Play Cast; Senior Play
Cast; N.F.L. 12; Key Club 12; Fu-
ture Teachers 12; Pep Club 12.



RAY LEE REEVES
Photography Club 9, Treasurer 9;
Key Club 10, Secretary 10; Basket-
ball 10; Homeroom Secretary 10;
Engineering Club 10; Co-Editor of
Annual 12; Junior Play; Beta Club
12; Senior Play.



FRANCES ANN POWELL
Signifer Magni Honors; Honor Club; Class
President 8; Tri-Hi-Y 9; Student Council 9;
Glee Club 7, 8, 10, 11, 12; F.H.A. 9, 10,
11, 12, Second Vice-President 10, Reporter
11; Home Room Vice-President 9, 10; English
Award 10; Pep Club 10, 11, 12; Biology A-
ward 11; Beta Club 11, 12, Treasurer 12;
Junior Scholastic Cup 11; Future Teachers
11, 12, President 12; Annual Staff 12; All-
State Chorus 12; Senior Play.



PAUL DOUGLAS RAINEY
Basketball 8, 9, 10, 12; Football 9,
10, 11; Homeroom President 9, 10;
Hi-Y 10, Treasurer 10; Key Club
10, 12, President 12; W-Club 10, 11,
12; Junior Play Cast; School Paper
11; Class President 11, 12; Annual
Staff 12; Pep Club 11, 12, Treasurer
12; Senior Play Cast; Student Coun-
cil 9, 10, 12, Vice-President 12.



MALCOLM DILLS ROYSE
Photography Club 9; Perfect Attendance Award 9, 12; Key Club 10; Junior Play Cast; Annual Staff 12; Senior Play Cast.



EDWIN TAYLOR RYE
Transferred from Clark County High School; Basketball 8, 11, 12; Football 8, 11, 12; School Paper 11; Pep Club 11, 12; Junior Play; F. H. A. 12; Annual Staff 12; Mr. Touchdown 12; Senior Play.



ETHEL ELAINE SNOW
Signifer Magni Honoris; Honor Club; Home Room President 7; Glee Club 7, 8, 9, 10, 11, 12; Tri-Hi-Y 9; F. H. A. 9, 10, 11, 12; English Award 10; Pep Club 10, 11, 12; Beta Club 11, 12; Future Teachers 11, 12, Treasurer 12; Annual Staff 12; Junior Play; Senior Play.



MILDRED HOLLY STEVENSON
Signifer Magni Honoris; Honor Club; Little Theatre Club 9; F. H. A. 9, 10, 11, 12, Assistant Historian 11, Historian 12; Pep Club 10, 11, 12; School Paper 11; Home Room Secretary 11; Junior Play Cast; Beta Club 11, 12, Vice-President 12; Future Teachers 11, 12; A-Team Cheerleader 12; Annual Staff 12; Senior Play Cast.



JAMES THOMAS SPURLOCK
Transferred from Owenton, Kentucky; Basketball 12; F. H. A. 12; Senior Play.



CORA MARIE STIDHAM
Tri-Hi-Y 9; Honor Club; Perfect Attendance Award 10, 11; Junior Play; Senior Play.



JOYCE EVELYN THACKER
Transferred from Pikeville, Kentucky; Pep Club 10, 11, 12; Glee Club 10, 11, 12; School Paper 11; Senior Play Cast; Junior Play.



TIMOTHY RAY THOMAS
Hobby Club 9, 10; Hi-Y 10; Baseball 10, 11, 12; Perfect Attendance Award 10; Junior Play; Senior Play.



ALYCE CAROLE TURNER
Transferred from Richmond, Kentucky; Glee Club 11; Honor Club; Future Teachers 11, 12, Secretary 12; Junior Play Cast; Pep Club 11, 12; Annual Staff 12; School Paper 12; Senior Play Cast.



PATTY LOU WELLS
Glee Club 9, 10, 11, 12; Pep Club 10, 11, 12; Speech Work 10; N. F. L. 11, 12; Junior Play Cast; Senior Play.



FAY WALDEN
Signifer Magni Honoris; Honor Club; Glee Club 8, 9, 10, 12; Tri-Hi-Y 9; Home Room Secretary 9; F. H. A. 9, 10, 11, 12, Second Vice-President 11, First Vice-President 12; Pep Club 10, 11, 12; Home Room Treasurer 11; Beta Club 11, 12, Secretary 12; Future Teachers 11, 12, Vice-President 12; Editor of School Paper 12; Junior Play Cast; Senior Play Cast.



BONNIE CLAY WISE
Home Room Treasurer 9; Library Club 10; Pep Club 9, 10; Junior Play; Senior Play.

JUNIORS



MRS. WILLARD MARTIN
Sponsor



MRS. J. A. MC DAVID
Sponsor



CLASS OFFICERS

LEFT TO RIGHT; David Gibson, Treasurer; Betty Snowden, Secretary; Betty Muncie, Vice-President; Eddie Guerrant, President.



J. Barker



D. Bean



W. Bogard



J. Bunch



J. Chism



N. Clemons



J. Cole



D. Cornett



C. Day



C. Dearmond



A. Douglas



C. Ewen



A. Faulkner



D. Gibson



E. Guerrant



M. Guffey



R. Guinn



R. Haggard



P. Hall



M. Hensley



L. Hopkins



B. Johnson



D. Johnson



R. Justice



J. Lindsey



C. May



D. McCracken



R. McDonald



C. Miller



B. Muncie



E. Odgen



J. Owens



C. Prewitt



K. Ragland



A. Rainey



L. Ritter



J. Scrivner



R. Shepherd



B. Smith



B. Snowden



E. Stone



B. Strode



L. Van Meter



P. Walden



P. Whitehouse



V. Williams



F. Woosley



M. Wooten

SOPHOMORES



MR. COLONEL BLANKENSHIP
Sponsor



MISS THELMA CAWOOD
Sponsor



CLASS OFFICERS

LEFT TO RIGHT: Arthur McNulty, Co-President; Joan Rainey, Co-Vice-President; Pete Cooper, Co-Vice-President; Dennis Campbell, Co-President.



P. Adams



D. Allen



R. Allen



R. Bach



P. Barnett



J. Clark



B. Clay



P. Cooper



G. Cox



M. Curry



M. Brown



P. Byrd



D. Campbell



J. Delaney



W. Edwards



E. Ferrel



O. Flynn



J. Gamble



P. Gatson



P. Ginter



B. Gough



J. Hall



D. Hobbs



T. Holwick



G. Hull



A. Johnson



K. Johnson



G. Jones



B. Justice



W. Kimbrell



P. Lowe



A. Maines



L. Mason



J. Mastin



J. McCready



P. McNabb



A. McNulty



J. Mitchell



C. Norton



M. Patrick



C. Powell



C. Q-Berry



J. Rainey



S. Ray



S. Riddle



S. Ritter



J. Robinson



J. Robinson



W. Roe



D. Scott



R. Smyth

L. Spencer

B. Stockdale

B. Sullivan

M. Taylor



K. Turner

T. Turner

R. Welch

J. Wills

D. Winburn



C. Witt

P. Young



FRESHMEN



MISS NANCY CAWOOD
Sponsor



MRS. ERNEST PAYNTER
Sponsor



CLASS OFFICERS

LEFT TO RIGHT: Sonny Fox, Co-President; Lola Gilvin, Co-Vice-President; Patty Thorpe, Co-Vice-President; Benny Carrington, Co-Vice-President. SECOND ROW: Carl Puckett, Co-President; Jimmy Harter, Co-President.



J. Allen

W. Ball

V. Barnes

B. Beckham

V. Becraft



P. Berryman

F. Boaz

M. Bottoms

H. Bradley

B. Brown



R. Brown

B. Carrington

E. Chevront

B. Chism

E. Christopher



D. Clem

P. Cole

B. Crace

B. Cravens

F. Drew



D. Dunn

P. Dunn

C. Estes

E. Estes

A. Fox



F. Fox



S. Fox



J. Haggard



B. Hall



H. Harris



J. Harter



R. Henderson



D. Hopper



L. Hopper



L. Gilvin



W. Guerrant



W. Guinn



J. Grimes



J. Johnson



R. Johnston



D. Jones



D. Jones



M. King



B. Lee



I. Lowry



J. Martin



C. Hall



J. Hall



L. Hall



J. Hall



N. May



R. McCready



P. Means



B. Mitchell



D. Milton



P. Monroe



C. Morton



A. Newkirk



C. Puckett



S. Q-Berry



G. Rainey



L. Reeves



J. Roe



B. Rose



M. Shuttleworth



S. Smith



D. Spicer



J. Strange



P. Thorpe



P. Treadway



S. Veach



B. Witt



D. Woods



W. Woosley



M. Young

EIGHTH GRADE



Mrs. Standley McCracken



Mr. Hugh Hammet



Mrs. Clarence Weldon



J. Allen N. Allen A. Baber C. Baber C. Bird C. Bunch



J. Bunch G. Byrd B. Canter S. Carter S. Clem H. DeVary



L. Dixon P. Dougherty J. Duncan B. Eades B. Elza P. Flinchum



F. Flynn K. Fox R. Fraysur R. Fraysur L. Gaines R. Glasscock



W. Green M. Grove G. Hall W. Hall P. Hatton F. Hopkins



J. Hunt H. Johnson P. Johnson H. Jones L. Jones B. Kash



D. King J. Kinnard M. Lawill M. Layne J. Lisle D. Lucas



L. Mastin J. McClain T. McKenzie E. Moore P. Nave J. Newby



K. Newkirk J. Norton L. Parido E. Pelfrey J. Phelps D. Puckett



F. Ray B. Reeves B. Richardson R. Robinson C. Royse B. Skinner



L. Smith L. Snowden G. Spurgeon D. Strange B. Tapp F. Tipton



V. Tipton J. Todd S. VanSickle C. Wade O. Watts D. Wills



S. Wheeler B. Whitaker F. Whitham R. Williams R. Wilson C. Witt



G. Woosley D. Woosley



SEVENTH GRADE



MRS. W. I. ECTON
Sponsor



MISS DALE WOODSON
Sponsor



K. Adams S. Allen D. Baber L. Baber B. Ball D. Ballard



B. Banninger J. Bellamy J. Benton G. Berryman B. Brantly B. Brush



W. Byrd D. Campbell W. Campbell P. Cartwell S. Chernick B. Chevront



L. Chevront C. Claypoole L. Cole R. Conkwright W. Conkwright K. Cox



B. Crowe B. Curry J. Dean M. Dunn C. Eldridge K. Ewen



R. Ferguson B. Florence S. Fox S. Fox A. Gamble N. Glasscock



B. Goff P. Green M. Greene V. Gough C. Hall B. Hayes



R. Hisle R. Huff E. Jones D. Kirkpatrick T. Ledford B. Marks



C. Mason G. McNabb M. Moore M. Moore E. Morris D. Murphy



S. Napier B. Nickell R. Norton J. Oakley J. Palmer D. Parker



A. Powers C. Prewitt L. Price B. Pritchett W. Puckett C. Ramsey



R. Reeves P. Reed J. Richardson P. Richardson M. Ritchie G. Robinson



J. Roe P. Rogers H. Rosenthal J. Shuttleworth T. Shepherd W. ShROUT



M. Silverman L. Smith G. Sparks C. Spurgeon R. Steagall G. Taylor



R. Taylor J. Thomas C. Watts B. Welch B. Wells C. Wise



J. Wiseman C. Young M. Rice P. Rice M. Williams

FOOTBALL



FIRST ROW, Left to Right: Coach Estill Branham, Manager Harold Johnson, Ray Bach, Eddie Rye, David Scott, Jimmy Harter, Lynn Hopkins, Johnny Hall, John Barker, Manager Willie Wilson. SECOND ROW: Leslie Reeves, Carl Puckett, Eddie Guerrant, Gayle Jones, David Gibson, Gerald Adams, C. B. Morton, Vick Williams, John Phelps, Bobby Sewell, Nick Mays, Wallace Guerrant, Bucky Beckham, Jimmy Mitchel, Charles Estes, Bill Mitchel, Ronnie Glascock, Hymon De Vary, Sonny Fox, Ronnie Williams.

Irvine	35-0
Henry Clay	34-0
Shelbyville	46-0
Versailles	13-0
Cynthiana	34-0
Paris	13-0
Frankfort	20-6
Mt. Sterling	14-6

BASKETBALL



FIRST ROW, Left to Right: Manager Willie Wilson, David Winburn, Kenneth Johnson, Gerald Adams, Billy Johnson, Eddie Rye, Paul Rainey, David Gibson, Jimmy Spurlock. SECOND ROW: Coach Estill Branham, David Scott, Pat Walden, Ray Bach, David Cornett, Skip McNulty, Tommy Turner, David Johnson, Manager Odell Flynn, Manager Harold Johnson. THRD ROW: Bucky Beckham, Carl Puckett, Jimmy Harter, Bobby Sewell, Hunter Harris, Bobby Rose, C. B. Morton, Sonny Fox.



Camargo	52-71
Paris	58-40
Madison-High	51-41
Irvine	61-67
Mt. Sterling	55-91
Henry Clay	46-63
Clark County	51-64
Versailles	
Madison High	
Nicholasville	
College High	
Alviton	
Irvine	
Mt. Sterling	
Cynthiana	
Paris	
Clark County	
Montgomery County	
Estill County	
Nicholas County	
Versailles	

