

THE

AWARDS  
of  
1957



WINCHESTER BOARD OF EDUCATION

STANDING: T. L. Beckham, Chairman; Leo Cruse, Vice-Chairman; J. J. Hodgkin, SEATED:  
Frank J. Ogden, Secretary; Taylor Lowry, L. T. Shepherd.



PRINCIPAL

Mr. Nelson Jones  
A. B., Morehead College  
M. A., University of Kentucky



SUPERINTENDENT

Mr. Frank J. Ogden  
A. B., Kentucky Wesleyan College  
M. A., University of Kentucky



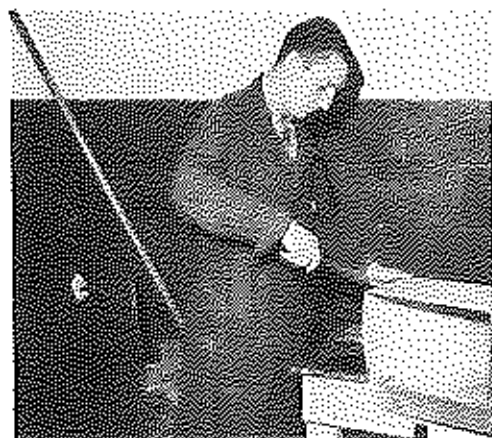
MISS DOROTHY JEAN BROOKS

Secretary to Superintendent



MRS. HAROLD BRYANT

Secretary to Principal



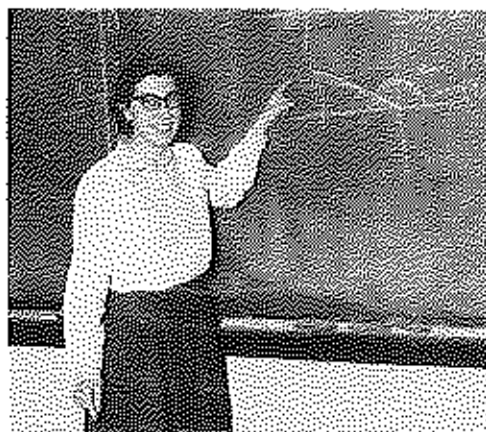
MR. JOHN HELM

B.S., Eastern College  
Metal Shop

Mathematics

MISS THELMA GAY CAWOOD

B.S., Rollins College, Florida  
University of Kentucky





Social Studies

MRS. R. R. CRAFT

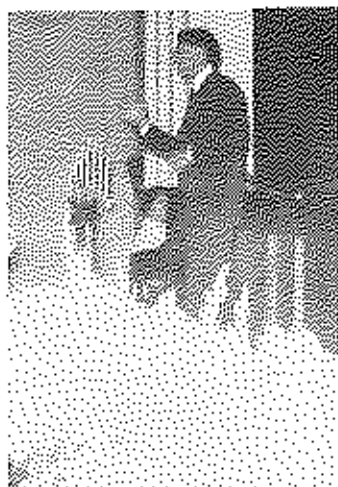
A.B., Berea College, Kentucky  
M.A., University of Kentucky



Commerce

MRS. WILLARD MARTIN

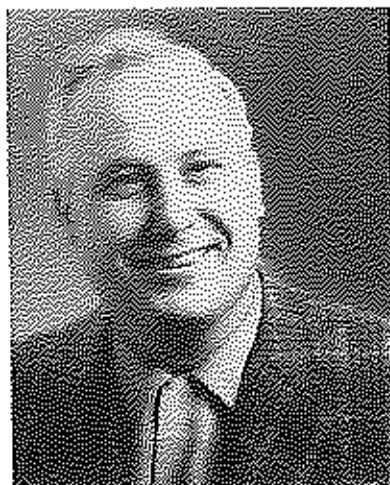
B.S., University of Kentucky  
Kentucky Wesleyan College



Band

MR. JOHN PATRICK

A.B., Union College, Kentucky  
M.A., University of Kentucky



Coach

MR. ECK BRIANHAM

B.S., Western Kentucky State College  
M.A., Western Kentucky State College



Glee Club

MISS ANNE W. BARKER

B.M., University of Kentucky

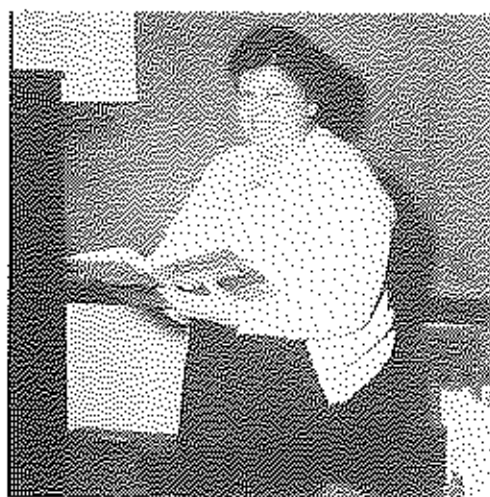




Foreign Languages

MRS. J. A. McDAVID

A.B., Transylvania College  
Graduate Work, University of Kentucky



English

MISS NANCY M. CAWOOD

A.B., Kentucky Wesleyan College  
M.A., University of Kentucky



Home Economics

MRS. ELIZABETH WATSON

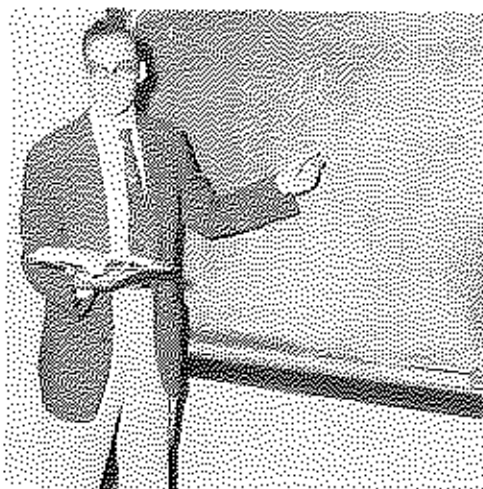
B.S., University of Kentucky  
Graduate Work, University of Kentucky



Social Studies

MRS. ERNEST DAYNFER

A.B., Berea College, Kentucky



Social Studies

MR. GEORGE COVINGTON

A.B., M.A., Murray State Teachers College



Librarian

MISS FLOXSIE HOWARD

A. B., Berea College, Kentucky  
Graduate Work, University of Kentucky



Metal Shop

MR. HOMER LEDFORD

B. S., Eastern State Teachers College  
Berea College, Kentucky



Science

MR. COLONEL BLANKENSHIP

B. S., M. A., University of Kentucky



English  
Speech

MRS. NEVILLE McCRACKEN

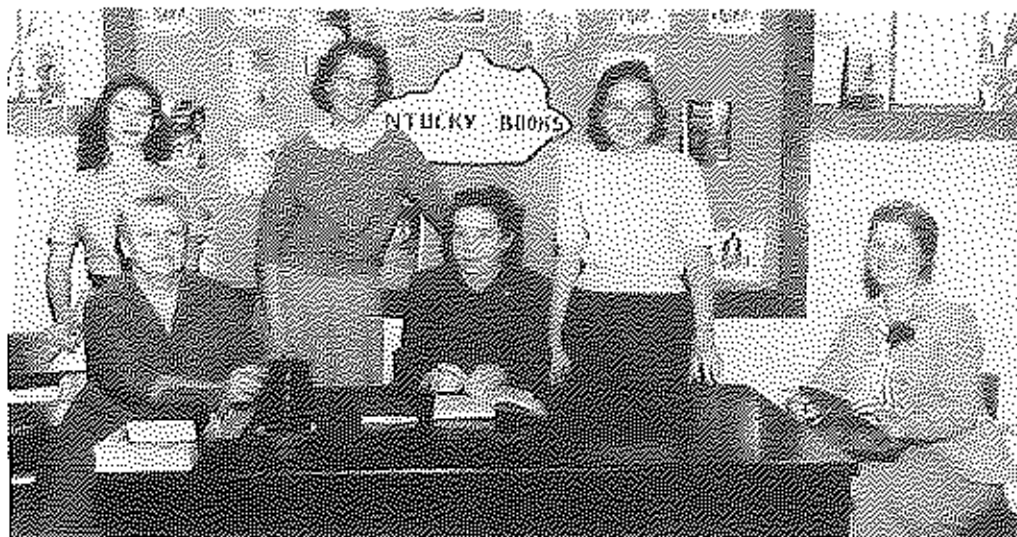
A. B., M. A., University of Kentucky  
Modern Languages

(Mrs. McCracken absent when pictures taken)

Social Studies

MRS. CORINNE HOLBROOK DUGGAN

A. B., Morehead State College, Centre College



MRS. W. I. ECTON Junior High Social Studies  
 B.S., Eastern State College; M.A. George Peabody College.

MISS ALICE ROE Junior High Librarian  
 A.B., Kentucky Wesleyan College; George Peabody College; University of  
 Kentucky.

MRS. JOHN NUNAN Mathematics  
 A.B., Kentucky Wesleyan College.

MRS. JAMES PEYTON English  
 A.B., Georgetown College.

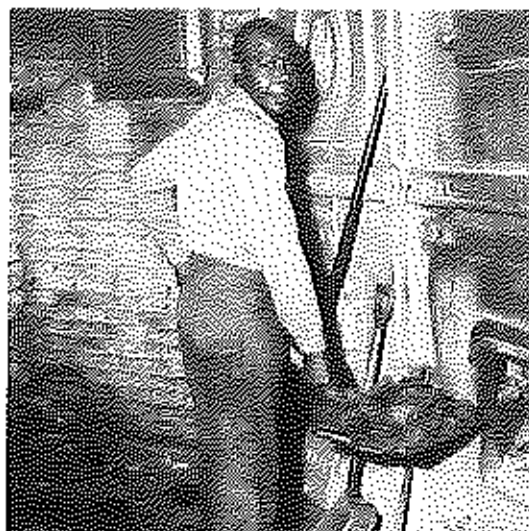
MRS. BETTY REEVES Social Studies  
 A.B., Kentucky Wesleyan College; Randolph-Macon.

MISS SHIRLEY UPCHURCH English  
 B.A., Wake Forest College

\* \* \* \* \*

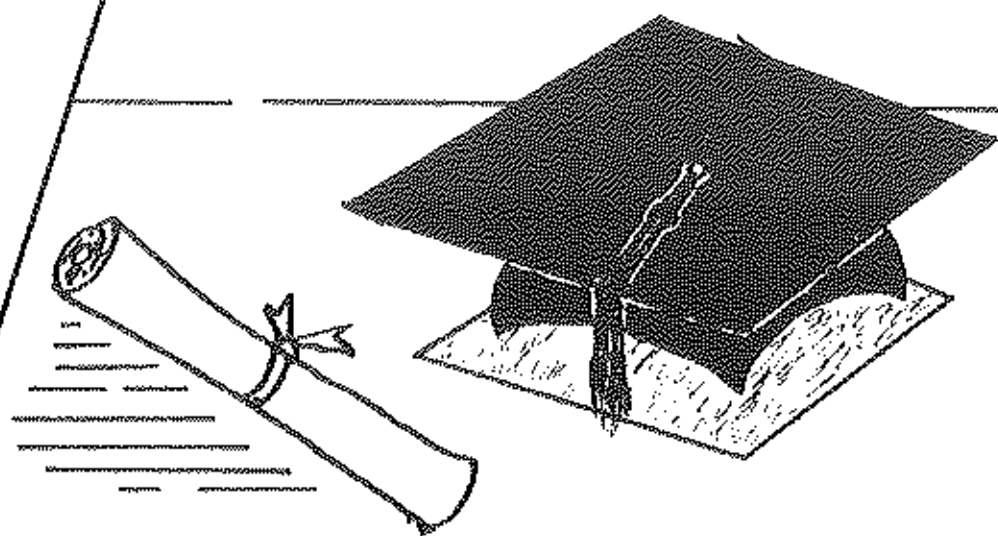


EURÁ B. OWEN

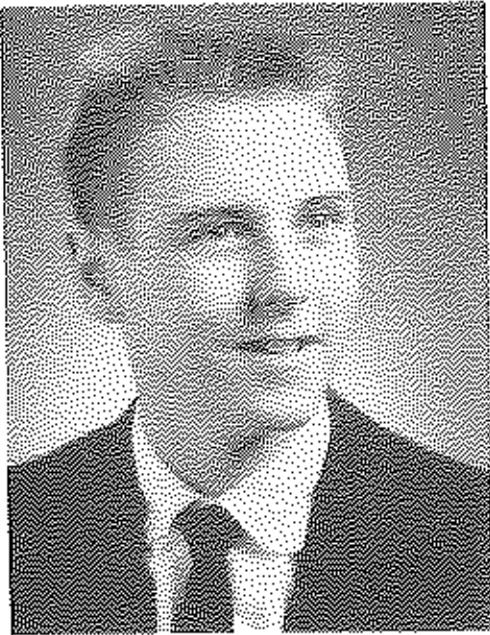


JAMES HAMPTON

# Senior



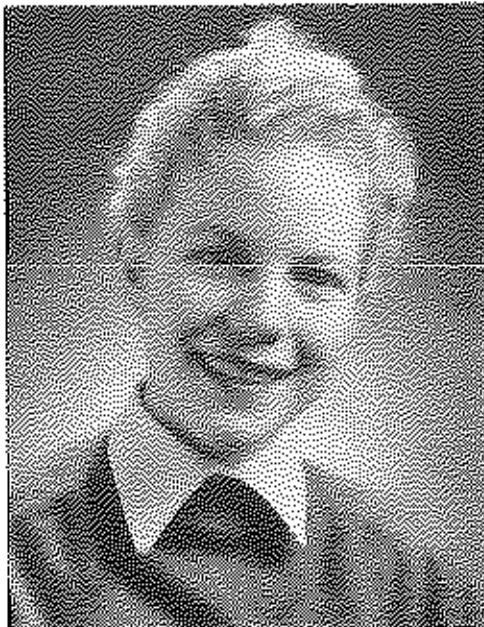




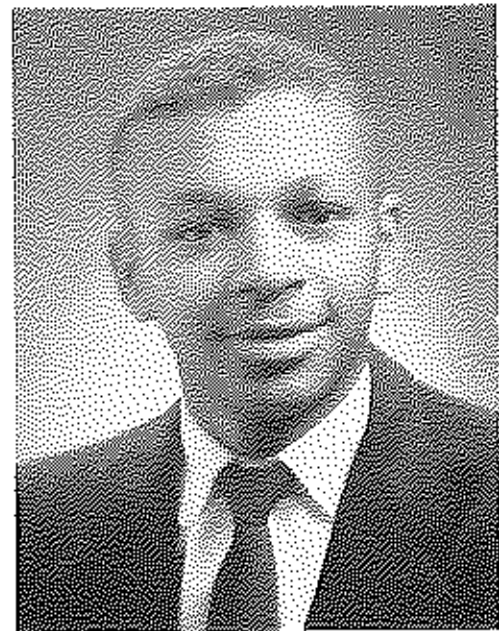
**JOHN HAMPTON BARKER**  
Transfer from Clark County '54;  
Football 11; Pep Club 11; Junior Play  
Cast 10; Band 8,9,10; Key Club 12;  
F.F.A.; Senior Play Cast.



**DOROTHY POIPE BEAN**  
Pep Club 10,11,12; Honor Club 12;  
F.H.A. 9,10,11,12; Tri-Hi-Y 11,12;  
Rec. Leader 11; Junior Degree 9;  
Chapter Degree 10 F.H.A.; Sec-  
retary F.T.A. 11,12; Shawnee Staff;  
Glee Club 7,8,9,10,11,12; All State  
Chorus 11; Junior Play; Senior Play.



**WICKLIFFE ANN BOGARD**  
Honor Club 8,9,10; Little Theater;  
Play 8; Vice-President Homeroom  
9; Secretary Homeroom 11; F.H.A.  
9,10,11,12; Junior Degree; Chap.  
Degree; Rec. Leader; Pep Club  
10,11,12; F.T.A. 11,12; Glee Club  
7,8,9,10,11,12; Junior Band 11; Ma-  
jorette 10,11; B.T. Cheerleader 11;  
Varsity Cheerleader 12; Annual Staff  
Subscription Manager 12.



**AUGUSTUS BROWN BOSLEY**  
Transfer from Oliver High; Hi-Y 7,  
8,9,10,11; Speech 10,11; Football  
11,12; Junior Play Cast 11; Music  
Club 10,11,12.



**ROBERT ARTHUR BROOKS**  
Transfer from Oliver High; A-Team Basketball, Football, Baseball 9,10, 11,12; Captain Football Team 10,11; President Junior Class; Vice-President Y.M.C.A.; Junior Play; Student Cong. 12; Key Club 12; Senior Play Prod.



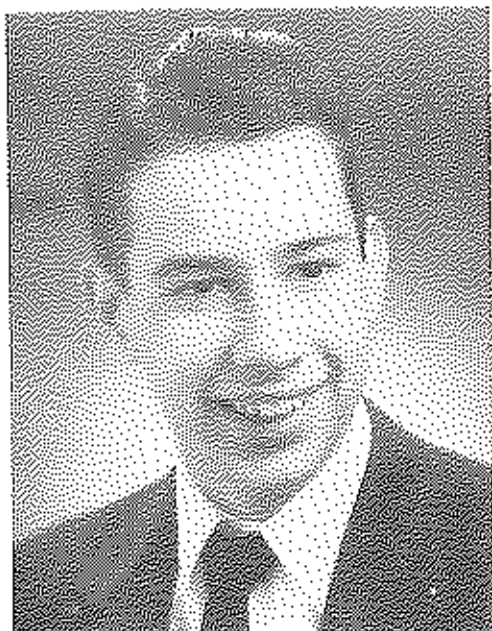
**OLLIE BEATRICE CHENAULT**  
Transfer from Oliver High; 4-H Club 7,8; Assistant Secretary Y-Teens 9, 10,11; Speech 10,11; Football Cheerleader 11; Music Club 11; Vice-President Junior Class; Junior Play; Pep Club 12; F.H.A. 12; F.T.A. 12; Annual Staff.



**CHARLOTTE JO ANN BUNCH**  
Junior High Debate 8; Future Teacher 11,12; Pep Club 11,12; Glee Club 7,8,9,10,11,12; Junior Play; F.H.A. 9,10,11,12; Parliamentarian 12; Tri-Hi-Y 12; All State Chorus 11; Senior Play; Annual Staff 12.



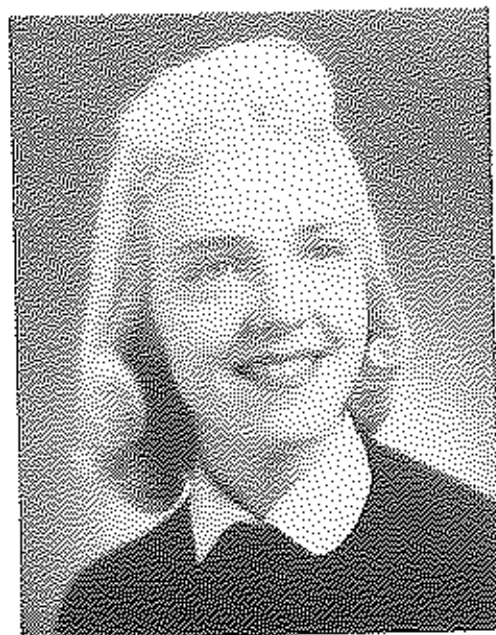
**JIMMIE COLE CHISM**  
Hi-Y 12; Pep Club 10,11,12; Future Teachers 12; Junior and Senior Play Production; Typist Annual Staff - Shawnee.



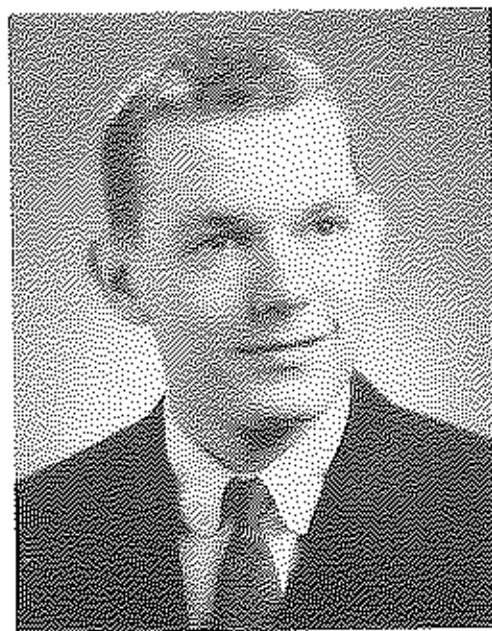
**WILLIAM WILSON HUME CLAY**  
Junior High Play 8; Pep Club 10,  
11; Glee Club 7,8,9,10,11,12; Win-  
ner Essay Contest; F.T.A. 11,12;  
Biology Award 10; Beta Club 11  
and 12; Latin Award 10; World  
His. Award 10.



**SHIRLEY JUANITA COLE**  
Glee Club 8,9,10,11,12; Little Thea-  
ter Club 8; Junior High Play and  
Junior High Debate 8; Glee Club  
7,8,9,10,11,12; F.H.A. 9,10,11,12;  
Junior & Chapter Degree; Pep Club  
10,11,12; Junior and Senior Play;  
Annual Staff; F.T.A. 11,12; Tri-  
Hi-Y 12.

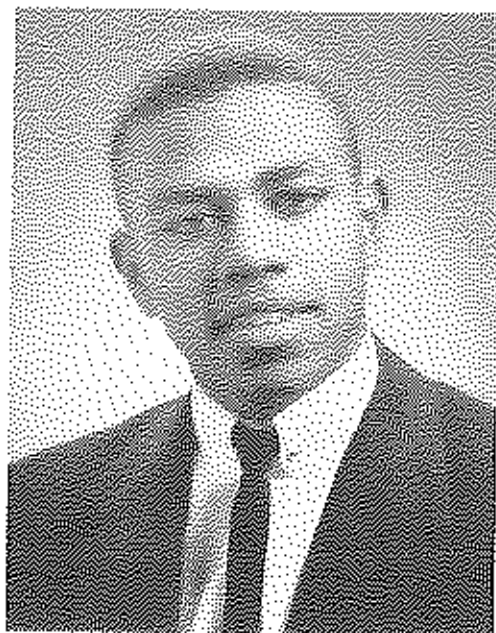


**NANCY CAROLYN CLEMONS**  
Class President 8; Little Theater  
Club 8; Junior High Play; Junior  
High Debate; Glee Club 7,8,9,10,11,  
12; F.H.A. 9,10,11,12; Junior and  
Chapter Degrees; Pep Club 10,11,12;  
Annual Staff; Junior Play 11; All  
State Chorus 11; F.T.A. 11,12.

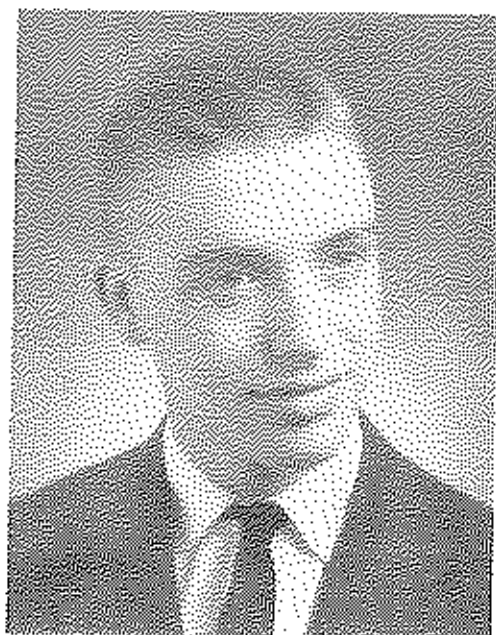


**DAVID ALLAN CORNETT**  
Honor Club 9,10,11,12; Mr. Papeose;  
Attendant May King 8; Basketball  
7,8,9,10,11,12; Band 7,8,9,10; Sen-  
ior and Junior Play; Beta Club  
11,12; Hi-Y 11; Secretary Key Club  
F.T.A. 12; AR. Student Council 12;  
Class President 7,9,10,11; Perfect  
Attendance Award 9,10,11; Music  
Festival - State 9,10; Annual Staff;  
Junior Play; King Band Carnival.





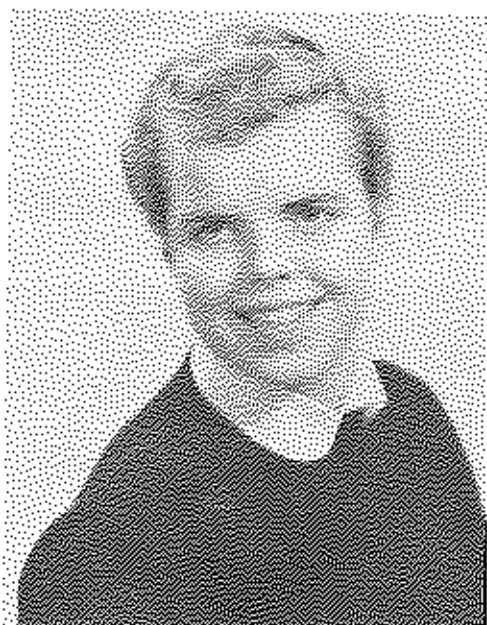
CHARLES WENDELL DAVIS  
Transfer from Oliver High; Hi-Y  
7,8,9,10,11; Basketball 10,11; Foot-  
ball 9,10,11,12; Baseball 9,10; Music  
Club 11; Junior Play 11; Key Club 12.



CLAUDE LEE DeARMOND  
Student Council 7,8; Basketball 7,  
8; Baseball 9,10; Pep Club 11,  
12; Key Club 12; Annual Staff.

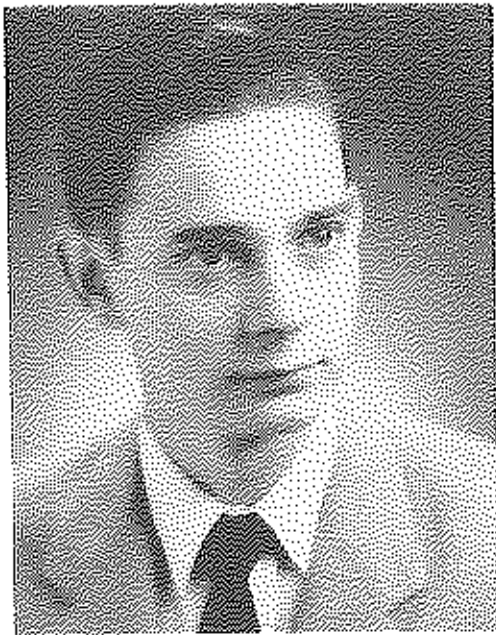


CATHERINE ANN DAY  
Little Theater Club 8; Junior High  
Play; Glee Club 7,8,9,10,11,12; Pep  
Club 10,11,12; F.H.A. 9,10,11,12;  
Junior and Chapter Degree; Debate  
11; N.F.L. 11,12; Majorette 10; Band  
10,11; F.T.A. 11,12; All State Chorus  
11; Tri-Hi-Y 11,12; Junior Play -  
Annual Staff 11; Senior Play 12.

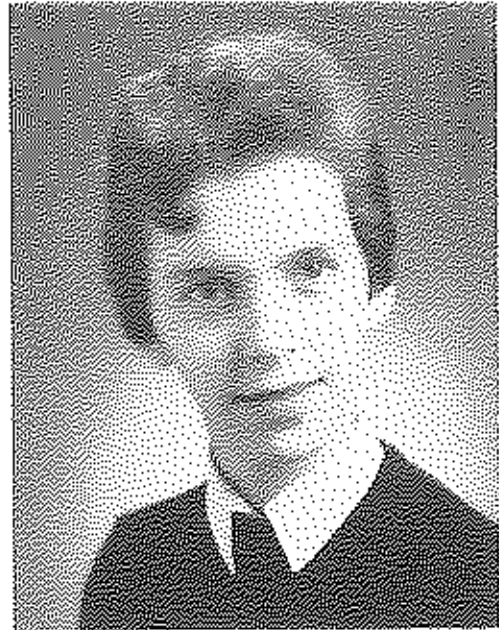


ELIZABETH ANN DOUGLAS  
Little Theater 8; Junior High Play;  
Junior High Debate 8; F.H.A. 9,  
10,11,12; Junior and Chapter De-  
grees; Business Manager Annual  
Staff; Glee Club 7,8,9,10,11,12; Pep  
Club 10,11,12; President of Pep  
Club 12; Junior and Senior Play  
Cast -- All State Chorus 11; F.T.A.  
11,12; N.F.L. 10,11,12; Debate 10;  
Honor Club; Tri-Hi-Y 11,12.





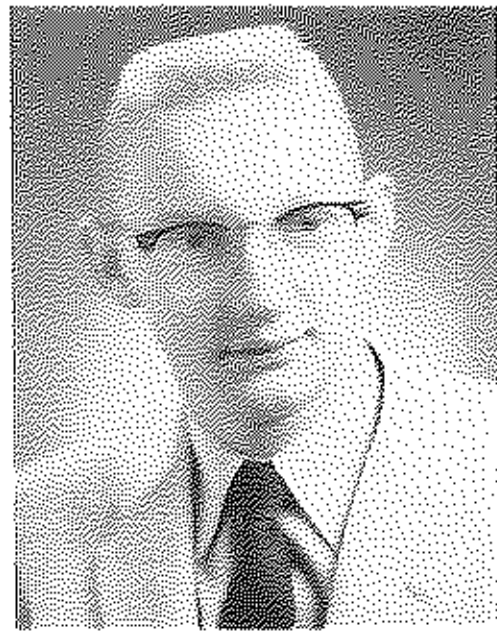
CHARLES RONALD EWEN  
Sportsman Club 8; Honor Club 9;  
Perfect Attendance Award 9; Gen.  
Science Award 9; Beta Club 11,12;  
Treasurer Beta Club 12; Key Club  
11,12; Secretary Key Club 12; Hi-  
Y 11,12; Vice-President 12; Stu-  
dent Council 11,12; Junior and Sen-  
ior Play; F.T.A. 12; Pep Club 12;  
Key Club and Beta Club Convention.



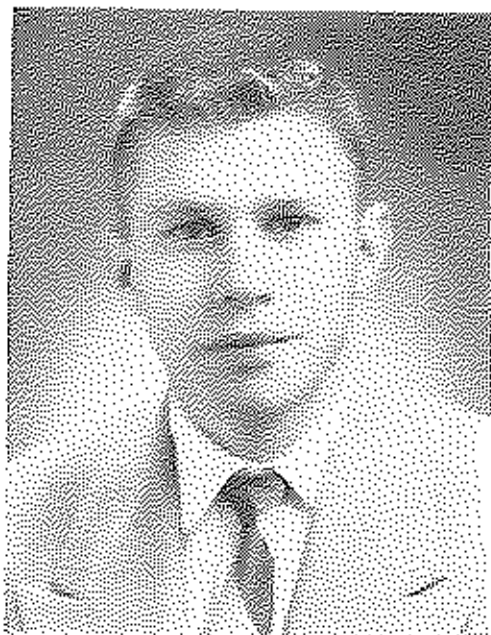
ANNA CLAY FAULKNER  
Honor and Beta Club 11,12; N.F.L.  
10,11,12; President N.F.L. 11,12;  
Degrees Merit, Excellence Honor  
Debate - 10; F.T.A. 9,10,11,12;  
Junior and Chapter Degrees; Glee  
Club 7,8,9,10; Junior and Senior  
Play; Annual Staff; Pep Club 10,  
11,12; Tri-Hi-Y 11; Junior High  
Play-Debate; Little Theater Club.



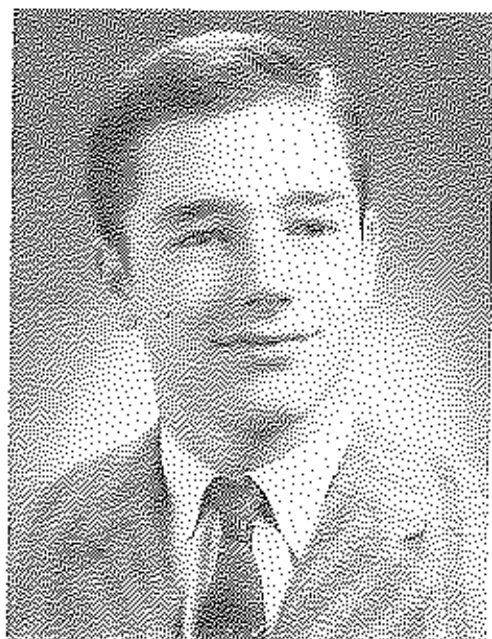
CAMILLA HOLLAND ESTES  
Transfer from St. Agatha Academy  
12; Glee Club 7,8; F.H.A. 9; Tri-  
Hi-Y 9; Transfer from Irvine High  
10; Secretary Supt. office, Assistant.



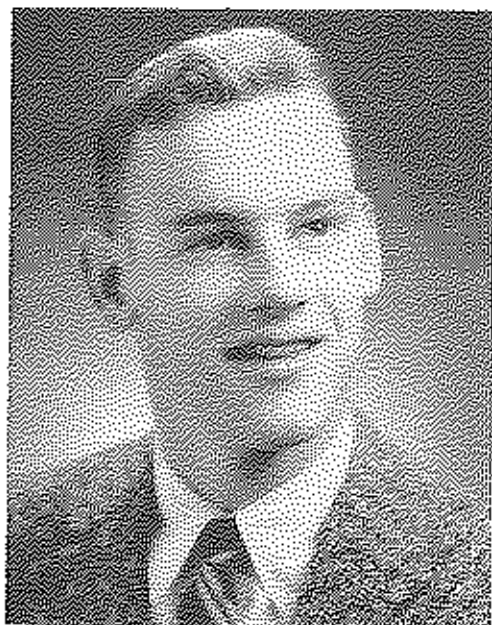
LEE ROY GATSON  
Pep Club 9,10,11,12; Junior Play  
Cast.



**CHARLES GIBSON**  
Transfer from Clark County High;  
F.F.A. 9,10; Pep Club 9,10,12; F.  
T.A. 12.



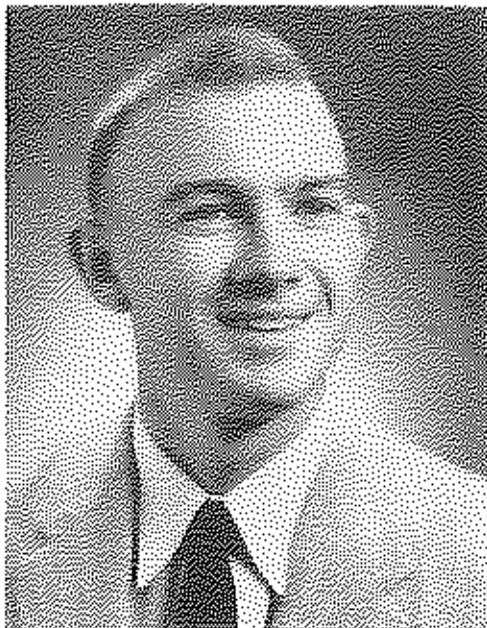
**EDWARD OSWALDS GUERRONI JR.**  
First Assistant Mr. Pepsico 8;  
Baseball 9; Basketball 9; Treas-  
urer Homeroom 10; Pep Club 10,  
11,12; Football 10,11,12; Junior  
Class President; Senior Class  
President; Key Club 11,12, Secy;  
Treasurer 12; Vice-President 12;  
Student Council 11, President 12;  
Junior and Senior Play; H-Y 12,  
Treasurer; Beta Club 11; Annual  
Staff; Home Club; Key Club Con-  
vention.



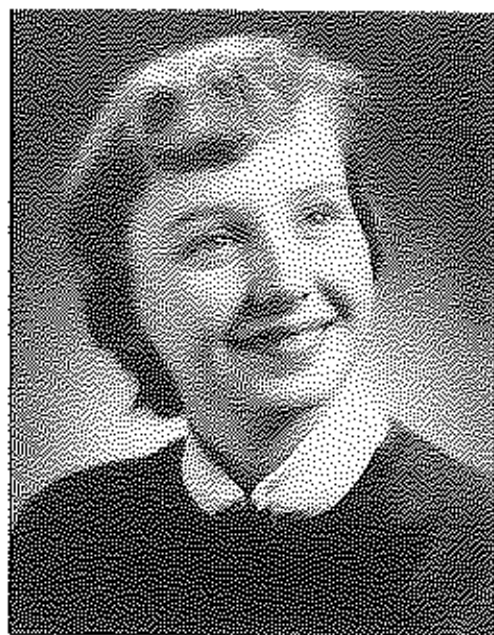
**DAVID M'CHELL GIBSON**  
Band 9; Vice-President Homeroom  
10; Treasurer Homeroom 11; Bas-  
ketball 9,10,11,12; Football 10,11;  
Junior and Senior Play Cast; Key  
Club 11,12; Pep Club 11,12.



**MAVIS LORETTA GUFFEY**  
Little Theater Club 8; Student Coun-  
cil 8,11; Pep Club 10,11,12; Honor  
Club; Treasurer Homeroom 9; Eng.  
Award 9; Glee Club 7,8,9,10; Sig-  
nifer-Magni Honoris; Beta Club 11,  
12; Secretary B.C. 12; Editor-in-  
Chief Annual 12; F.H.A. 9; Song-  
leader-Historian, Junior and Chap-  
ter Degrees; Junior and Senior Play;  
Bookkeeping and Shorthand Awards;  
Junior Cup; F.T.A. 11,12; A.M. Girls-  
State 11; Tri-Hi-Y 12.



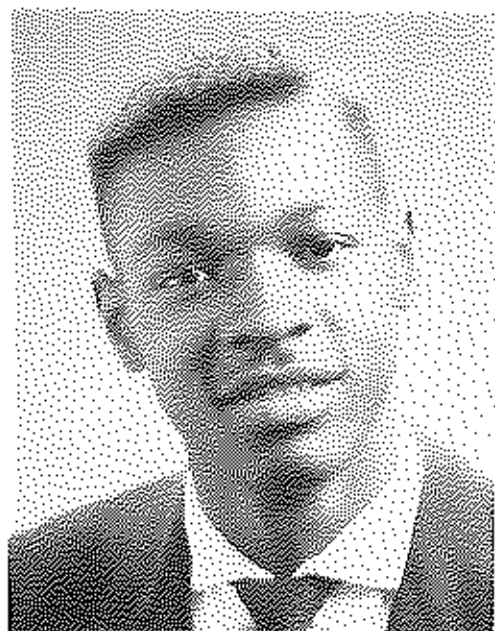
**RICHARD ALLEN HAGGARD**  
 Junior High Basketball 7,8,9,10,12;  
 Baseball 9,11,12; Honor Club; Junior  
 Play and Senior Play Production;  
 Junior High Football.



**PATRICIA ANN HALL**  
 Junior High Play; Home C. 9; Little  
 Theater 8; Ref. Home Handbook 8;  
 Junior High Debate 9; Glee Club 9,  
 10,11,12,13; Tri-Hi-Y 12; S.F.L.  
 10,11; Seaman 11; Senior Play; All  
 State Chorus 11; Annual Staff;  
 Service Staff 11; Pep Club 9,10,  
 11,12; Y.H.A. 9,10,11,12; Secre-  
 tary 11; Reporter 12; Judge and  
 Chapter Organizer, F-Extra Class  
 Leader 9; A.R. Variety Cheerleader;  
 Debate 10; F.C.A. 10; Debate 10;  
 Junior Play 11; Secretary Home  
 Room 10.

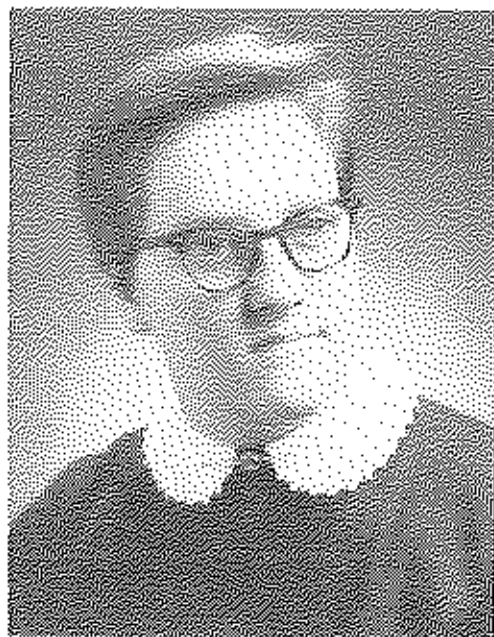


**CECIL MARIE HALEY**  
 Transfer from Oliver High; Y-Teens  
 9; Speech Club 10; Sub. Cheerleader  
 11; Music Club 11; Junior Play;  
 Pep Club 12; Tri-Hi-Y 12; Soc. 12;  
 Senior H.R. Annual Staff 12.



**CHARLES HAMPTON**  
 Transfer from Oliver High; Hi-Y  
 10,11; Freshman Class Club; Jr.  
 Class Club; Glee Club 11; Speech  
 Club 11; N.F.L. 12; Pep Club 12;  
 Key Club 12; Debate 12.

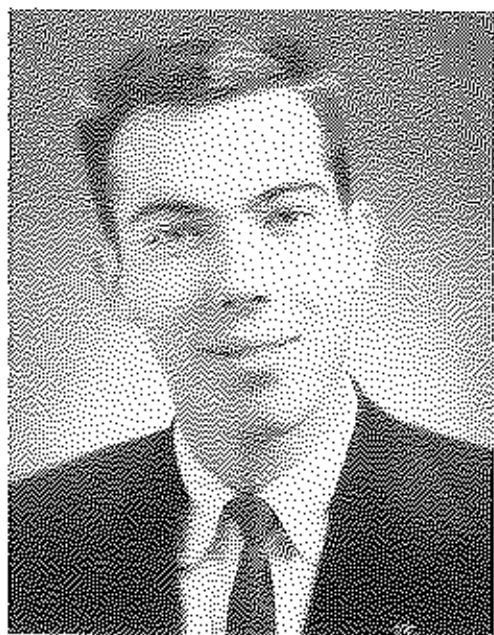




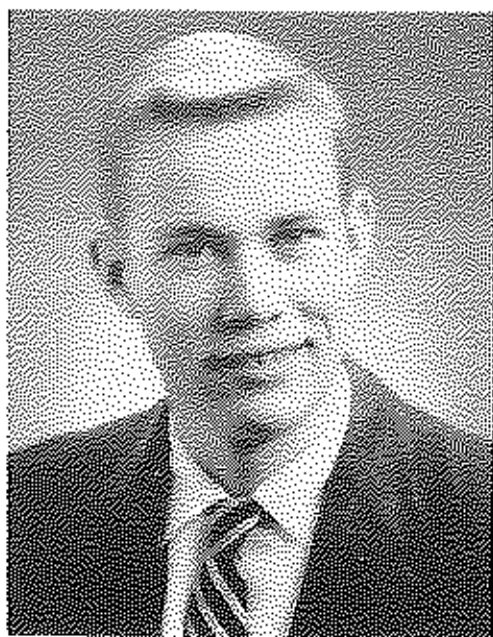
MARLENE DELORES HENSLEY  
Future Teachers 11,12; Pep Club  
11,12; Glee Club 7,8; Junior Play  
11; Tri-H-Y 12; Senior Play.



LESLIE DAVID JOHNSON  
Football 7,8; Baseball 9, 10, 11,12;  
Future Teachers Association 12;  
Junior and Senior Play Production,

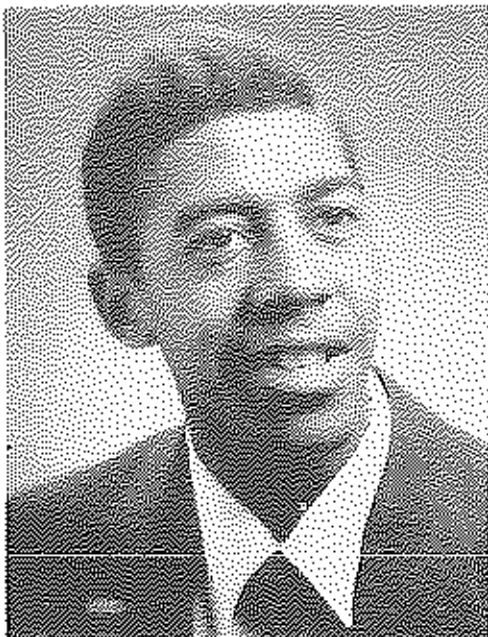


LYNN CARROLL HOPKINS  
Football 10,11; Key Club 11,12; Per-  
fect Attendance 10,11; Industrial  
Arts Award 9; Basketball 7; Band 7;  
Glee Club 12; Pep Club 9,10,11,12;  
Junior and Senior Play; Senior An-  
nual Sports Editor.



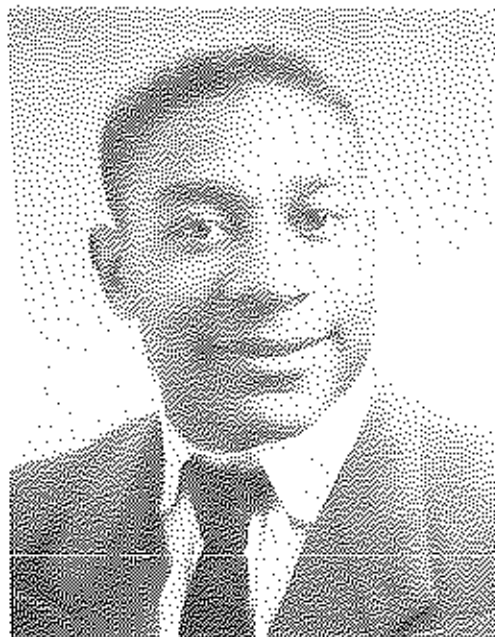
WILLIAM EDWARD JOHNSON  
Basketball 8,9,10,11,12; All District  
11, Honorable Mention All-State 11;  
Baseball 9,10,11,12; Football Mana-  
ger 10; Honor Club; Perfect Atten-  
dence 8,9,11,12; Key Club 11, 12;  
Vice-President Beta Club 12; Key  
Club 11; President 12; F. T. A. 12.





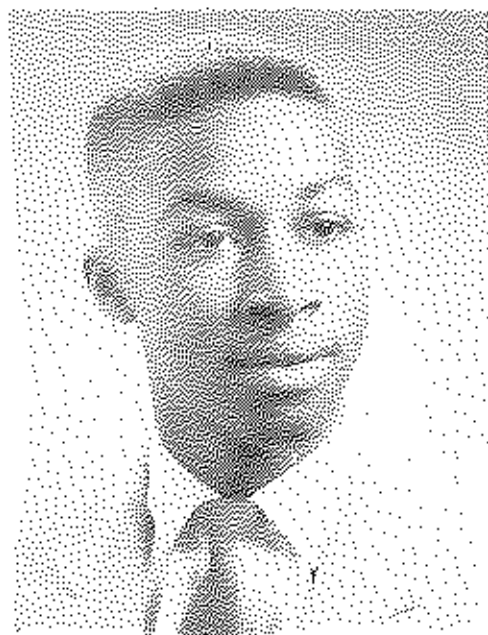
HENDERSON LEE

Transfer from Oliver High; Junior Class Play; Basketball 9, 10, 11; Speech; Gator 10, 11.



PHILLIP LEE

Transfer from Oliver High; All Bluegrass Team Baseball 11; 9, 10, 11, 12; Baseball, Football & Basketball; Speech Club.



JAMES WILLIAM LEWIS

Transfer from Oliver High; Music Club 10, 11; Basketball 9, 10, 11; Junior Class Play; Speech Club 10, 11; Y.M.C.A. 9, 10, 11.



JANE MONCURE LINDSAY

Transfer Midway Girls' School; Spanish Club 12; President F.T.A. 11, 12; F.H.A. 11, 12; Junior and Senior Play; Honor Club; Pop Club 10, 11, 12.



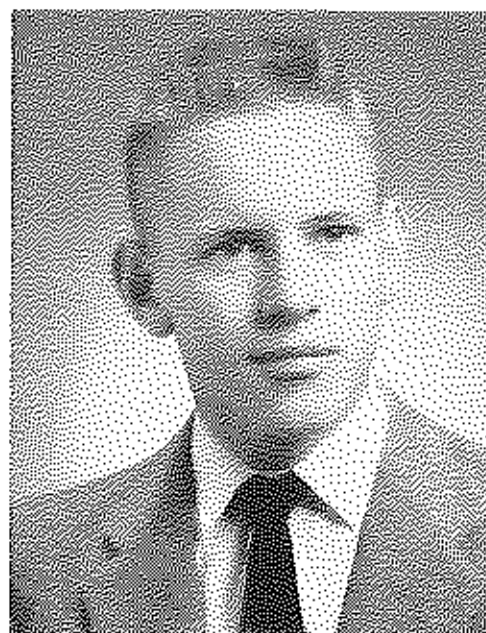
PHYLLIS JANE LOWE  
Glee Club 9,12; Pep Club 10,11,12;  
F.H.A. 9,10,11,12; Junior and Senior  
Play; Junior and Chapter Degrees  
F.H.A.; Tri-Hi-Y 12.



CAROLYN MAY  
Beta Club 11,12; F.T.A. 11, 12;  
F.H.A. 9,10,11,12, Treasurer 11;  
Junior and Chap. Degrees; Pep Club  
10,11,12; Junior Play; State F.H.A.  
Degree; Magna Signifer Honoris;  
Honor Club; Perfect Attendance Aw-  
ard 8,9,10,11; Glee Club 9,10,11,12;  
Tri-Hi-Y 11,12; Annual Staff; Girls'  
Basketball Team 11.



DAVID STANLEY McGRACKEN  
Band 9,10; N.F.L. 10,11,12; Debate  
10,11,12; Harry Schacter Disc. Aw-  
ard 10; Regional Debate Champ 10;  
Key Club 11,12; Pep Club 11,12;  
F.T.A. 11; Junior and Senior Play;  
Treasurer N.F.L. 11; National High  
School Institute in Speech; National  
Point Leaders; National Merit Se-  
niorship.



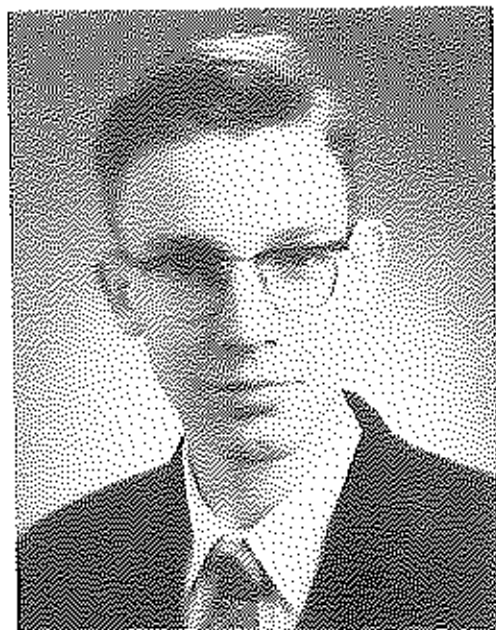
RALPH WAYNE McDONALD  
Basketball 7, 8; Football 8; Pep Club  
12; F.T.A. 12; Basketball 10.



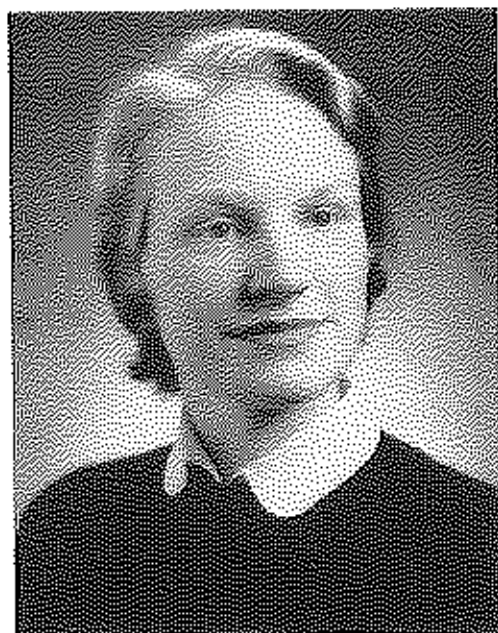
**BEATRICE DELOIS MURRAY**  
Transfer from Oliver High; Program Chairman Senior Class; Junior Class Play 11; Speech Choir 10, 11; Chaplin Y-Teens 11; Vice-President Library Club; Music Club 11; Annual Staff 12; F.T.A.; F.H.A.; Pep Club 12.



**JEROME ELLIOT OWENS**  
Transferred from Louisville High School 11; Shawnee High; Future Teachers 12; Hi-Y 12; Pep Club 12.



**STANLEY OCKERS**  
Transfer from McCreary High, Whitley City, Kentucky to W.H.S.

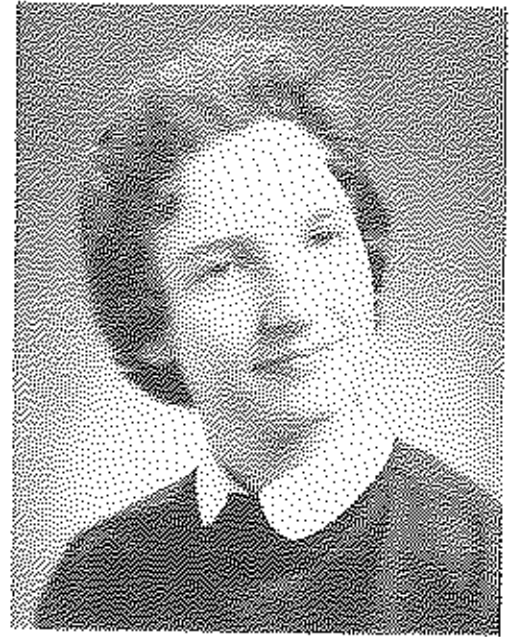


**ELLEN OGDEN**  
Secretary-Treasurer Home Room 8; F.H.A. 12; Pep Club 11; Tri-Hi-Y 12; Annual Staff.

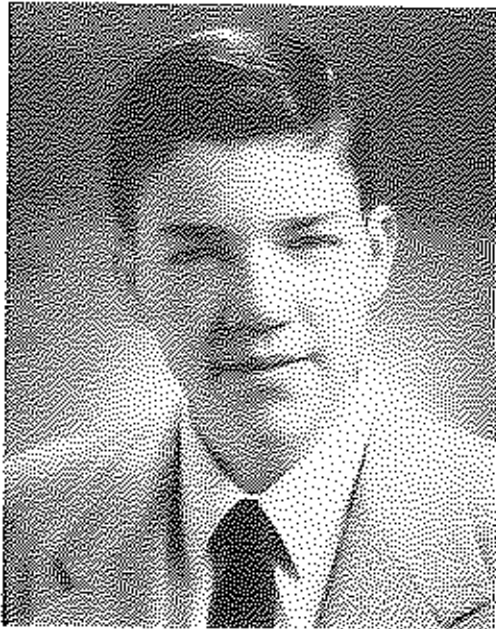




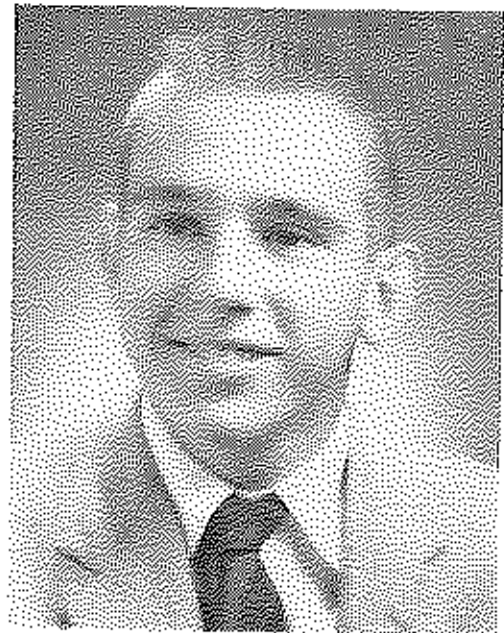
**ANNA CLAY PELFREY**  
Transfer from Midway Junior College; Shawnee High; Pep Club 7,8,9, 10,11; Art Club 8; Glee Club 8,9,10, 11; Photo Club 10,11; F.H.A. 12.



**CAROLYN HALSEY JEWITT**  
Vice-President Home Room 7; President Home Room 8; Little Theater 8; Junior High Play; Home Room Treasurer 9; Tri-Hi-Y 12; F.H.A. 9,10,11,12; Vice-President F.H.A. 12, Junior and Chapter Degrees; F.T.A. 11,12; Junior and Senior Play; Beta Club 12.

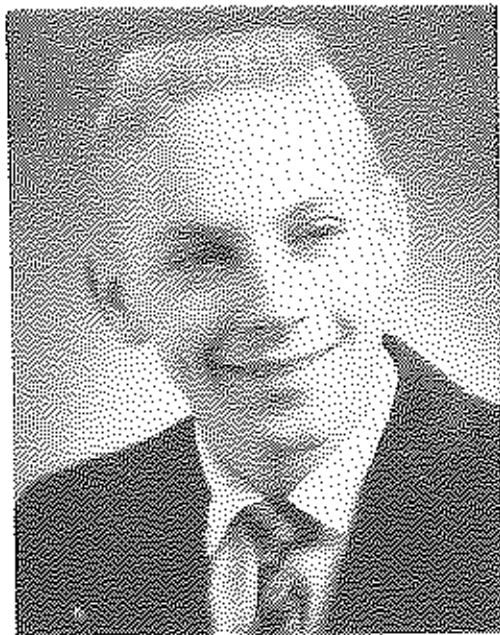


**CHARLES QUISENBERRY**  
Pep Club 10,11,12; Future Teachers 12; Key Club 12; Band 11,12; Hi-Y 12; Senior Play Stage Manager 12.

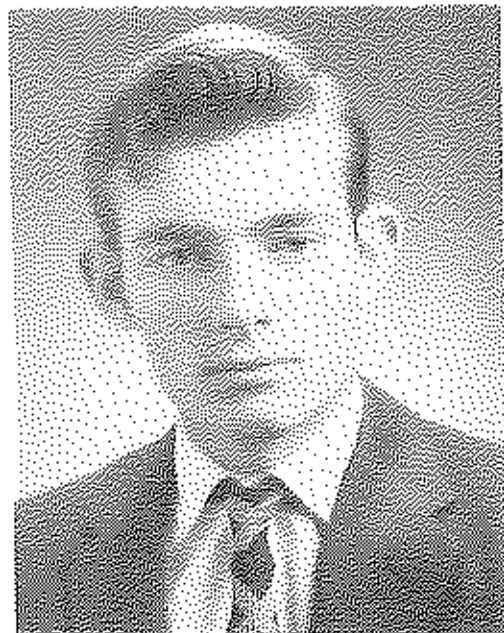


**KENNETH RAGLAND**  
Basketball 7,8,9,10; Baseball 10,11, 12; Pep Club 12; Key Club 12; Future Teachers 12; Perfect Attendance Award 9.

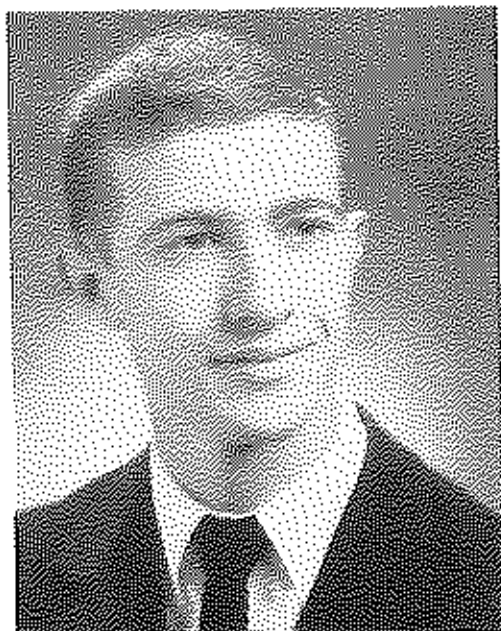




**ROBERT LAWRENCE RITTER**  
Basketball 7,8; Football 7; Glee  
Club 12; Baseball 10; Junior Play  
11; Senior Play Stage Manager; Pep  
Club 12.



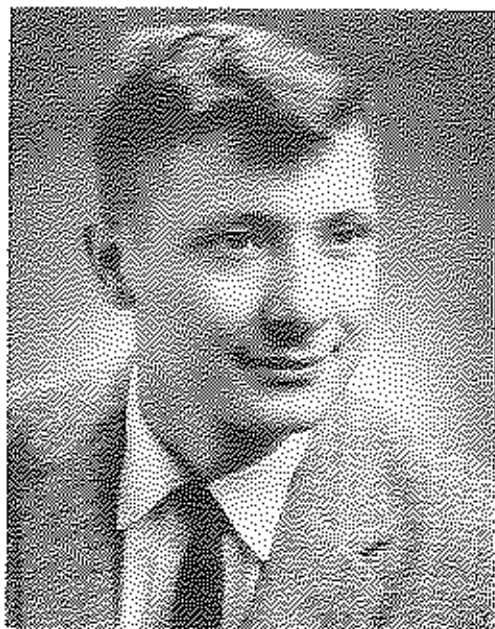
**WILLIAM ROBINSON**  
Future Teachers 12; Junior and  
Senior Play Production; Spanish  
Club 12.



**JOHN BURNAM SCRIVNER**  
Band 7,8,9,10,11,12, President 11;  
Drum Major 12; F.T.A. 11,12; Pep  
Club 10,11,12; N.F.L. 10,11,12; De-  
gree Honor-Excellent, Regional  
Band Festival 11; Junior and Senior  
Play, Stage Manager 12; Key Club  
11,12; Debate 10,11; Glee Club 12;  
Junior High Play 8.



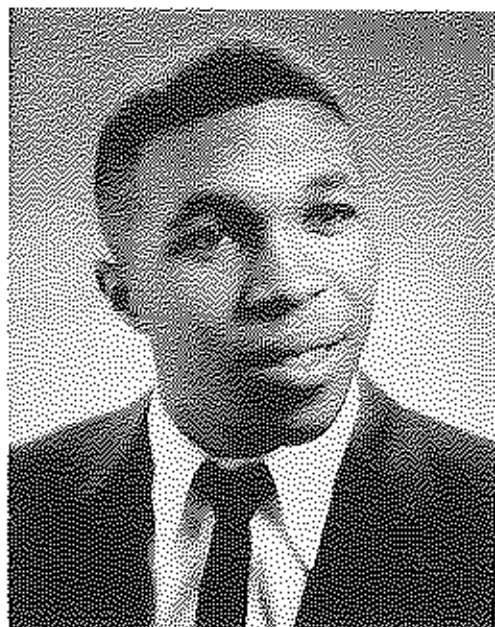
**RUTH ANN SHEPARD**  
Pep Club 10,11,12; Tri-Hi-Y 11,12;  
Chaplain F.T.A. 11,12; Secretary 12;  
F.H.A. 9, 10, 11, 12, Second Vice-  
President 12; Junior and Chapter  
Degrees; Beta Club 12; Attendant  
May Queen 8; Junior High Play;  
Junior and Senior Play; Glee Club  
9,10,11,12; Treasurer Home Room  
10; Secretary Home Room 11; Al-  
ternate Student Council 11; Little  
Theater 8; Junior High Debate 8;  
Future Teacher Award 11; F.T.A.  
12.



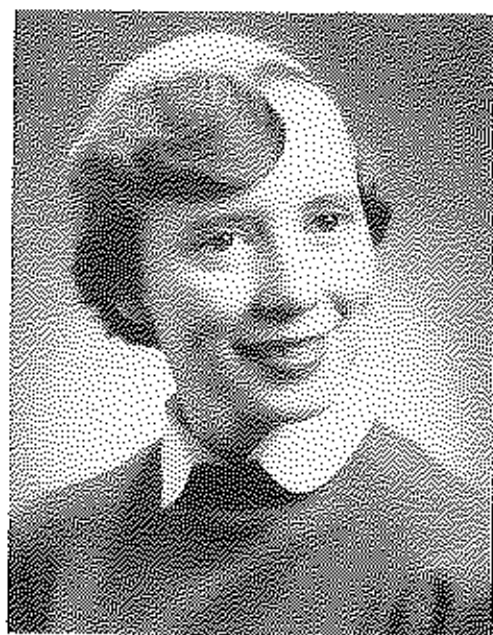
**LINDSEY CLARK SMITH**  
 Transfer from Clark County High;  
 Future Teachers; Hi-Y 12; Key  
 Club 12; Annual Staff 12; Senior  
 Play Production.



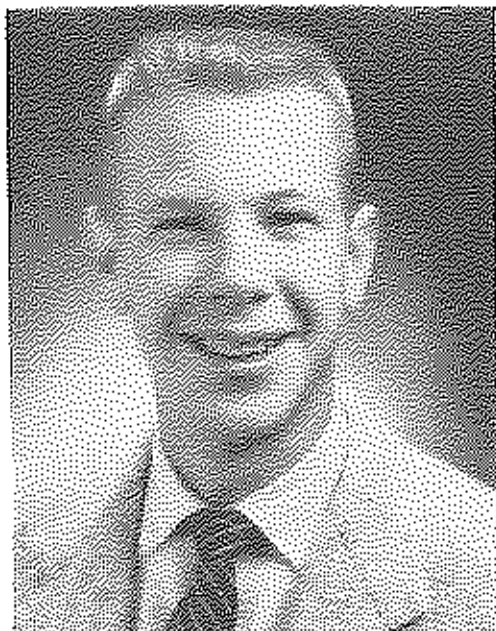
**BETTY RUTH SNOWDEN**  
 Junior High Cheerleader 8; Junior  
 High Club; Student Body Pageant  
 M; Class 10; Treasurer Home Room  
 9; Pep Club 9,12,12; Secretary-  
 Treasurer Pep Club 12; Junior and  
 Senior Play; F.H.A. 9, 10, 11, 12;  
 Junior and Chapter Degrees; F.T.A.  
 11,12; Beta Club 11,12; President  
 12; Tri-Hi-Y 12; President Home  
 Club; Girls' State 11; Girls' Club  
 9,10,11,12; Home Room Treasurer  
 11; Home Room Secretary 10,11;  
 Annual Staff; Cheerleader A Team  
 11,12; Citizenship Award.



**ERNEST STEWART**  
 Transfer from Oliver High; Foot-  
 ball 10,11,12; Music Club; Speech;  
 Choir 10,11.



**ETHEL JO STONE**  
 Little Theater 8; Pep Club 10,11,  
 12; Junior High Play; Annual Staff;  
 A Team 8, Cheerleader 9, 10, 11,  
 12; Majorette 10; F.H.A. 9,10,11,12;  
 Junior and Chapter Degrees; Junior  
 and Senior Play; F.T.A. 11,12; All  
 State Chorus 11.



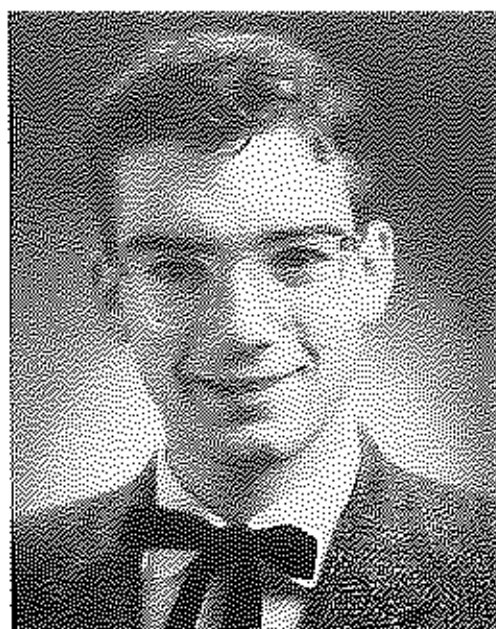
**ROBERT GARRARD STRODE**  
Mr. Pajoose 7; Junior High Basketball 7,8; May King 8; Honor Society 8; B Team Basketball 9,10; President Home Room 9, Vice President Home Room 10,11; Key Club 11,12, Treasurer 12; Perfect Attendance Award 11; Pep Club 11,12; Annual Staff; Beta Club 12.



**LEE VAN METER**  
Pep Club 9,10,11,12; Little Theater Club 8; F.T.A. 11,12; Glee Club 10, 11, 12; Junior and Senior Play; F.H.A. Junior and Chapter Degrees 9,10,11,12; N.F.L. 10,11,12; Annual Staff; All State Chorus 11; Junior High Debate and Play.



**MARION PATRICK WALDEN**  
Basketball 7,8,11; Perfect Attendance Award 7; W Club 9; Football Manager 9; Key Club 11,12; Pep Club 9,11,12; F.T.A. 11,12; Student Council 12; Senior Play; Hi-Y 12; May King Attendant 8; Band 7,8,9; Regional Band Festival 9,10; Perfect Attendance Award 8,9; Junior Play.

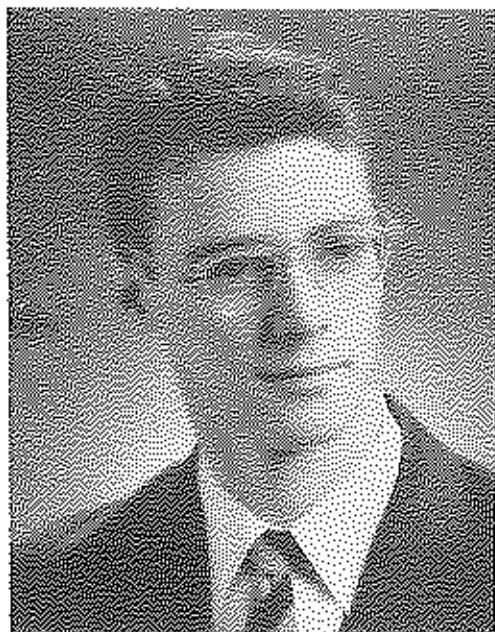


**ERROL VICTOR WILLIAMS**  
Hobby Club 8; Band 8,9,10; Football 10,11; Debate 10,11; N.F.L. 10, 11,12; Pep Club 10,11,12; Glee Club 12; Key Club 11,12.





PRUDENCE WHITEHOUSE  
Glee Club 9,10,11,12; F.H.A. 9,12;  
Junior and Senior Play Cast; Tri-  
li-Y 11,12.



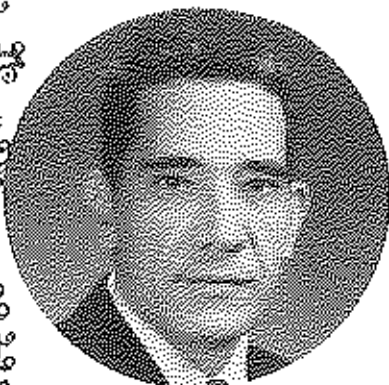
JOE WILLIAMS  
Transfer from Clark County 12;  
Pep Club 12; Art Editor Annual  
Staff 12.



MARCIA VENABLE WOOTTON  
May Queen 8; Little Theatre 8;  
Junior Hi Play; Attendant Miss Pap-  
oose 7,8; Junior High Cheerleader 7,  
8; F.T.A. 11,12; F.T.A. President  
12; F.H.A. 9,10,11,12; President  
12; Parliamentarian 10,11; Pep  
Club 10,11,12; Vice-President 12;  
Student Council Vice-President  
12; President Home Room Senior  
Class; A-team Cheerleader 10;  
Band Sponsor 12; Glee Club 8,10,  
11,12; Junior and Senior Play; An-  
nual Staff; Beta Club 11,12; Home  
Room Treasurer 12.



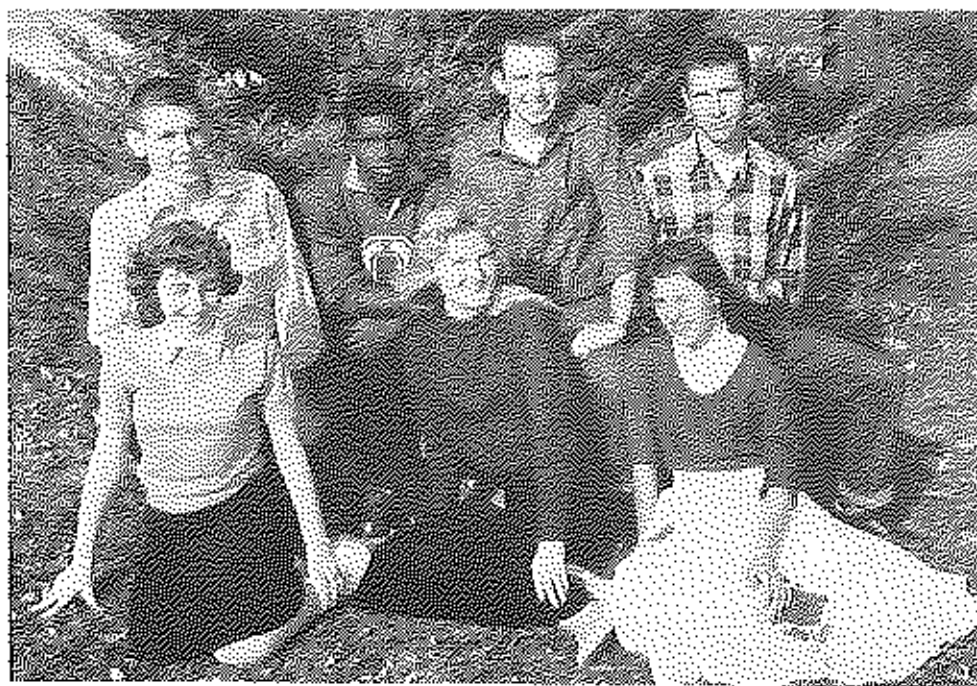
# Junior's



MR. BLANKENSHIP



MISS GAYWOOD



- |                                 |                                   |
|---------------------------------|-----------------------------------|
| President . . . . .             | Skip McNally<br>Ed Jones          |
| Vice-President . . . . .        | Kenneth Johnson<br>Keville Turner |
| Secretary & Treasurer . . . . . | Betty Gough                       |
| Secretary . . . . .             | Joan Ratney                       |
| Treasurer . . . . .             | Cody Norton                       |



D. Adams



D. Allen



R. Allen



R. Bach



P. Barnett



C. Bell



G. Bosley



M. Brown



M. Briston



K. Burdell



R. Bush



D. Campbell



M. Chambers



J. Clark



G. Cox



M. Curry



W. Edwards



E. Ferrell



J. Gamble



P. Gitter



B. Goolman



B. Gough



P. Green



E. Haggin



J. Hall



D. Harris



T. Holwick



G. Huff



C. Jackson



A. Johnson



K. Johnson



G. Jones





B. Kimbrell



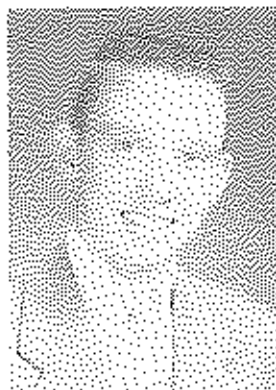
J. Laine



B. Mastin



J. McCready



S. McNulty



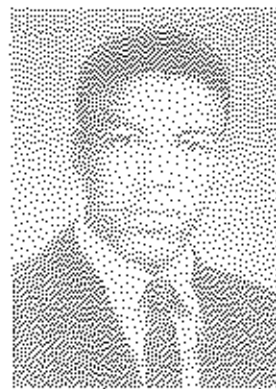
J. Mitchell



R. Morton



G. Mundy



C. Noland



C. Norton



A. Parker



M. Patrick



C. Pelfrey



C. Perkins



J. Rainey



S. Ray





S. Riner



J. Robinson



W. Roe



D. Scott



R. Simmons



R. Stoyth



A. Stewart



H. Stuckdale



B. Sullivan



B. Taylor



N. Tudor



K. Turner



A. Williams



J. Wills



D. Winburn



C. Wint

# Sophomores



MRS. PAYNTER



MISS CAYWOOD



MISS HOWARD



H. Allen



J. Allen



M. Baber



B. Beckham



P. Berryman



F. Boaz



M. Bottoms



J. Brooks



P. Brooks



B. Brown



H. Carrington



B. Chenault



J. Chenault



E. Cheveront



B. Chism



A. Clay



P. Cole



B. Crace



B. Cravers



D. Cruse



C. Davis



J. Davis



F. Drow



D. Dunn



P. Dunn





C. Estes



E. Estes



E. Fox



J. Gattard



E. Gentry



J. Grimes



W. Guerrant



W. Guinn



J. Haggard



J. Hall



J. Hall



L. Hall



J. Hatter



J. Hazelwood



R. Henderson



D. Hignite



D. Hopper



J. Johnson



R. Johnson



D. Jones



D. Jones



B. Lee



G. Logon



L. Lowry



M. Mastin





N. May



C. McCord



P. McNabb



M. Miller



B. Mitchell



B. Morris



P. Morris



A. Newell



A. Newkirk



L. Patton



S. Patton



C. Puckett



S. Qulsenberry



S. Qulsenberry



L. Reeves



F. Robinson



J. Roe



C. Saylor



P. Seals



B. Sewell



V. Shelton



M. Shuttlesworth



P. Smith



S. Smith



J. Strange



D. Tapp

W. Taylor

C. Frye

D. Tutor

S. Veach



C. Walters

M. Williams

B. Witt

D. Wood

J. Wood



W. Woosley

L. Hopper

# Freshmen



MRS. WATSON



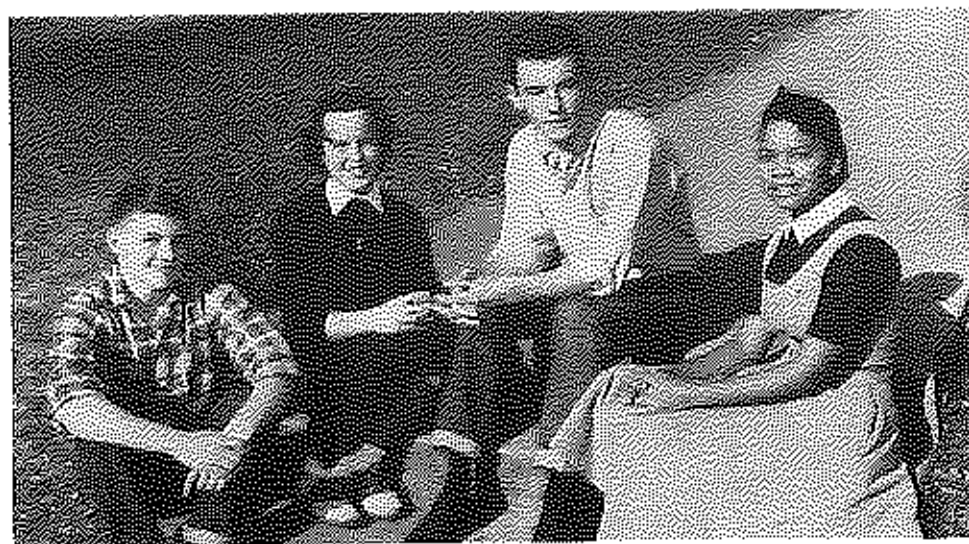
MRS. MC CRACKEN



MRS. CRAFT



MRS. DUGGAN



President, Johnny Phelps; Vice-President, Ann Jefferson; Secretary Sarah Van Sickle; Treasurer, Hymon Devary.





J. Allen

N. Allen

A. Baber

C. Baber

M. Bell



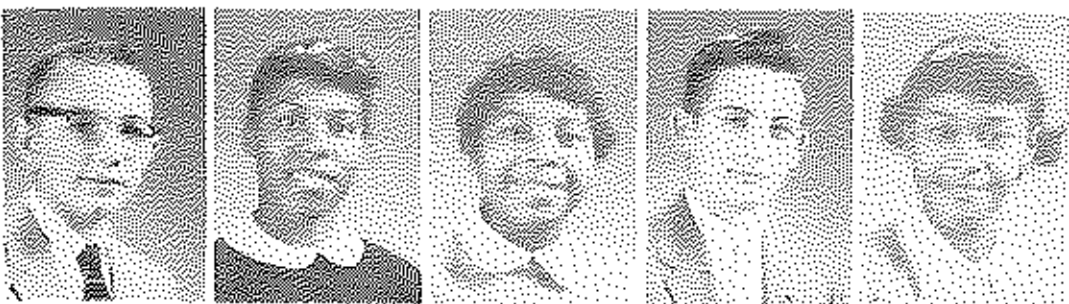
C. Bird

D. Bruton

C. Bunch

J. Bunch

G. Byrd



S. Carter

B. Chenault

D. Clark

S. Clem

D. Cueningham



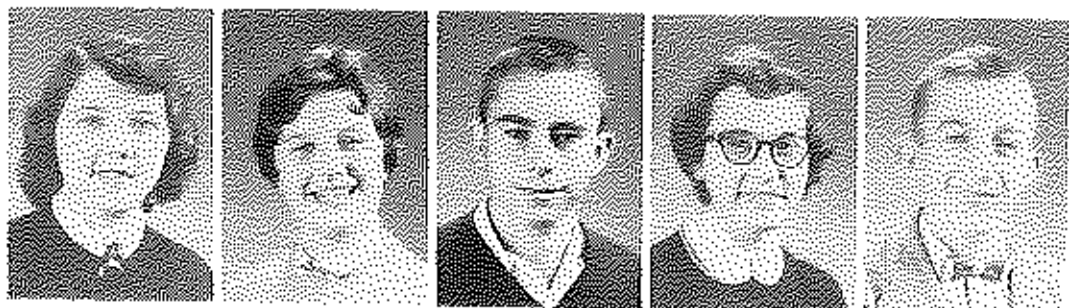
P. Daughtery

H. Devary

L. Dixon

R. Dubuy

J. Duncan



B. Eades

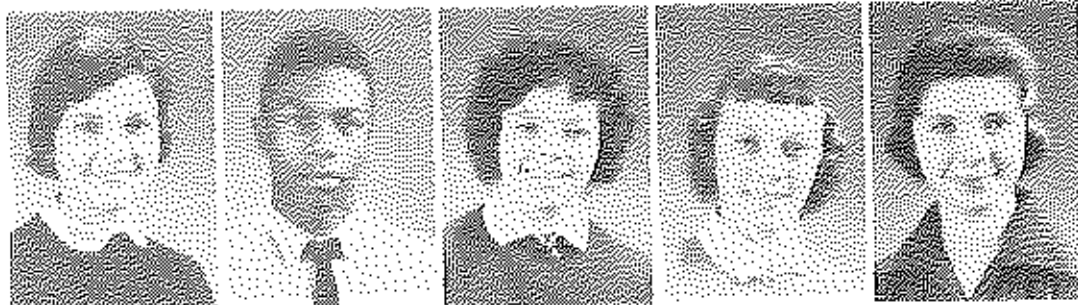
B. Elza

J. Estes

P. Fitchum

P. Flynn





K. Fox

P. Francis

R. Fraystur

R. Fraystur

L. Gaines



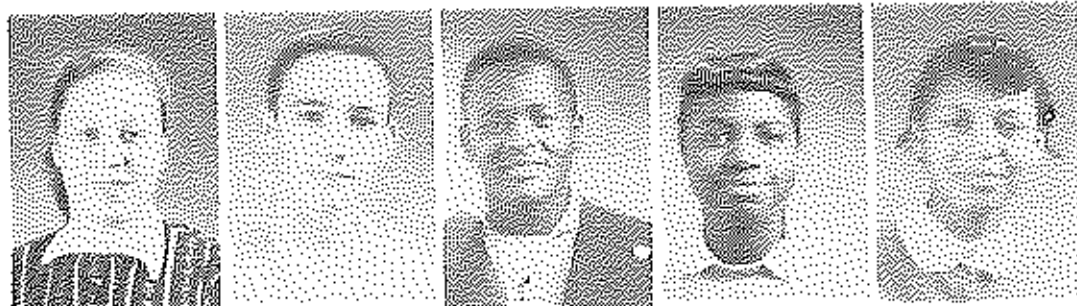
H. Garter

G. Gay

G. Givens

J. Givens

R. Glascock



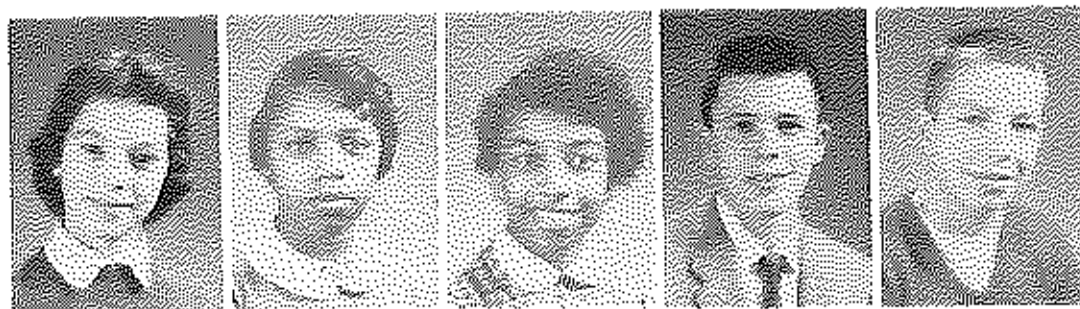
M. Groove

W. Hall

C. Hampton

B. Hampton

C. Hawkins



S. Hicks

A. Hill

B. Hill

H. Holland

F. Hopkins



J. Hunt

G. James

A. Jefferson

F. Johnson

H. Johnson



L. Jones



O. Jones



P. Jones



B. Kash



E. Kennedy



D. King



J. Kinnaird



W. Kircofe



M. Layne



A. Lee



G. Lee



J. Lisle



M. Lowell



D. Lucas



I. Martin



J. Mcrlweather



E. Moore



J. Newbly



K. Newkirk



J. Norton



C. Packer



C. Patton



J. Palfery



F. Phelps



J. Quisenberry



F. Ray

B. Reeves

B. Richardson

E. Richardson

G. Robinson



C. Rogers

P. Rogers

M. Sansone

G. Sewell

S. Van Sickle



A. Singleton

B. Skinner

L. Smith

L. Snowden

D. Stanfield



S. Staton

B. Stevenson

D. Strange

J. Strode

J. Steward



B. Tapp

F. Tipton

S. Tyler

C. Wade

O. Watts





S. Wheeler



White



M. White



N. Williams



R. Williams



D. Wills



R. Wilson



H. Wittaker



R. Wright



C. Woods



E. Woods



D. Woosley



G. Woosley



T. McKenzie

# 8<sup>th</sup> Grade



Mrs. Betty Reeves



Mrs. W. I. Ecton



K. Adams S. Allen L. Baber C. Bain B. Ball D. Ballard



B. Banninger J. Bellamy J. Benton G. Berryman D. Boyd D. Brantam



B. Brantley B. Brush R. Bush P. Cardwell M. Cassidy S. Chernick



B. Chevront B. Crowe R. Conkright L. Cole C. Claypool L. Chevront



B. Curry J. Dean M. Dunn C. Eeton K. Ewen R. Ferguson



B. Florence S. Fox S. Fox A. Gamble N. Glascock B. Goff



V. Gough P. Green M. Green P. Griggs W. Griggs E. Haggard



F. Harris B. Hays R. Hsie B. Huff M. James E. Jones



Kecton Keeton D. Kirkpatrick O. Stanfield T. Ledford G. McCord



G. McNabb J. Mace C. Mason T. Mastin C. Miller M. Moore



M. Moore E. Morris B. Micklas R. Norton K. Ockers J. Palmer





A. Phillips A. Powers C. Prewitt W. Puckett C. Ramsey R. Reeves



M. Rice P. Rice J. Richardson P. Richardson M. Ritchie C. Roberts



N. Robinson J. Roe P. Rogers H. Rosenthal L. Schriver T. Shepard



J. Shuttleworth W. Shroat M. Silverman G. Sparks R. Stegall G. Taylor



R. Taylor S. Thomas B. Wells C. Walters C. Watts I. Whisman



J. White M. Williams C. Wise J. Wiseman P. Wright

# 7<sup>th</sup> Grade



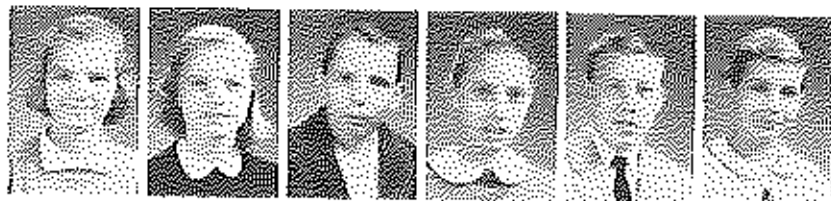
Miss Upchurch



Mrs. Payton



Mr. Covington



B. Abbott I. Abbot W. Abner A. Adams B. Aldridge J. Allen



J. Baber F. Bailey T. Barnett F. Bartlett R. Becraft E. Bledsoe



P. Brock S. Brock J. Brooks L. Brown D. Brush D. Bryant



B. Bunt A. Caldwell F. Campbell E. Case C. Casteel B. Christy



R. Clark M. Codell R. Collins W. Cooper K. Cox E. Crace



P. Crawford R. Critger M. Daniels L. Ecton J. Edwards D. Ferguson



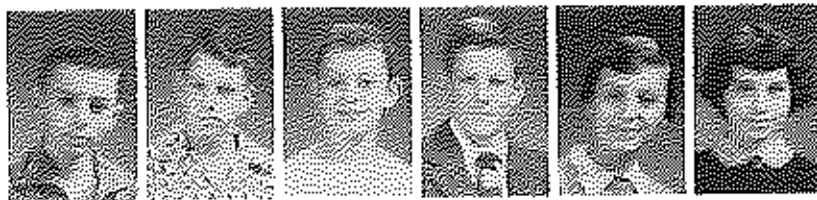
D. Ferrell B. Fincham B. Fox B. Fraley J. Gamble N. Gough



J. Griffith J. Gullett E. Haggard S. Haggard G. Haley D. Hatton



A. Hisle D. Howard W. Hull J. Humble P. Jackson P. Jewell



H. Johnson R. Johnstone H. Jones J. Jones W. Kelly M. Kidd

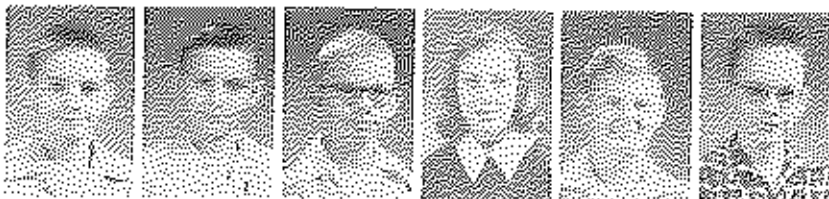


J. Ledford G. Lee B. Lockname S. McCray C. McIntosh R. McIntosh

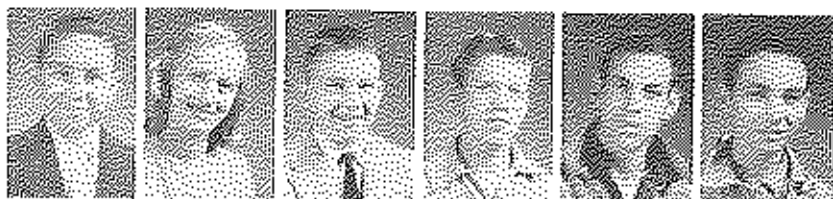




P. McKenzie M. Meriweather J. Morris M. Monroe J. Nelley M. Nickell



B. Paynter C. Pelfroy J. Pitts D. Potts B. Rainey B. Rake



C. Rankin E. Rapier T. Reddick L. Reed H. Reynolds W. Rice



J. Riddle G. Robinson K. Robinson N. Sampson C. Shelton R. Skinner



H. Smyth N. Smith P. Smith H. Spicer B. Srouf J. Stacy



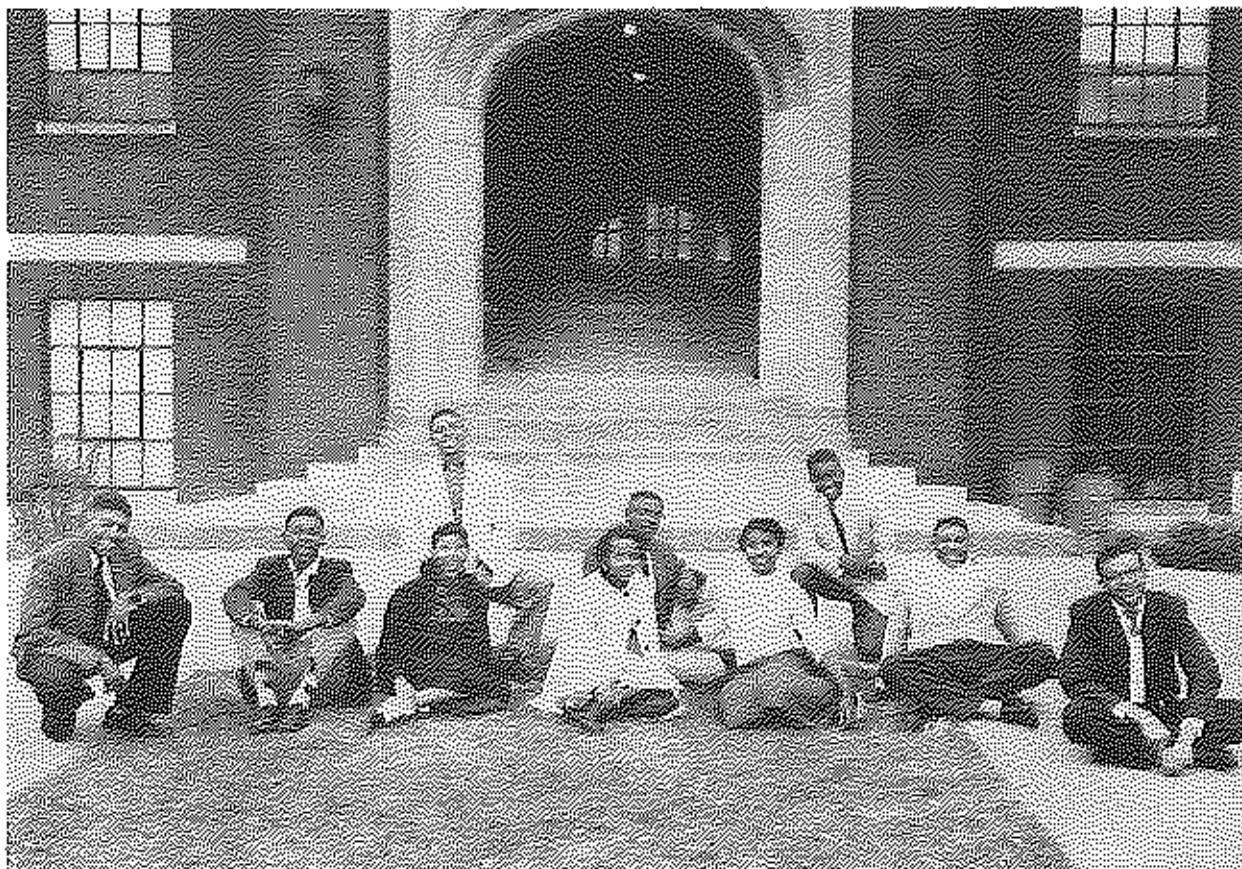
K. Stames W. Stidham L. Strange J. Sworn J. Thomas K. Townsend



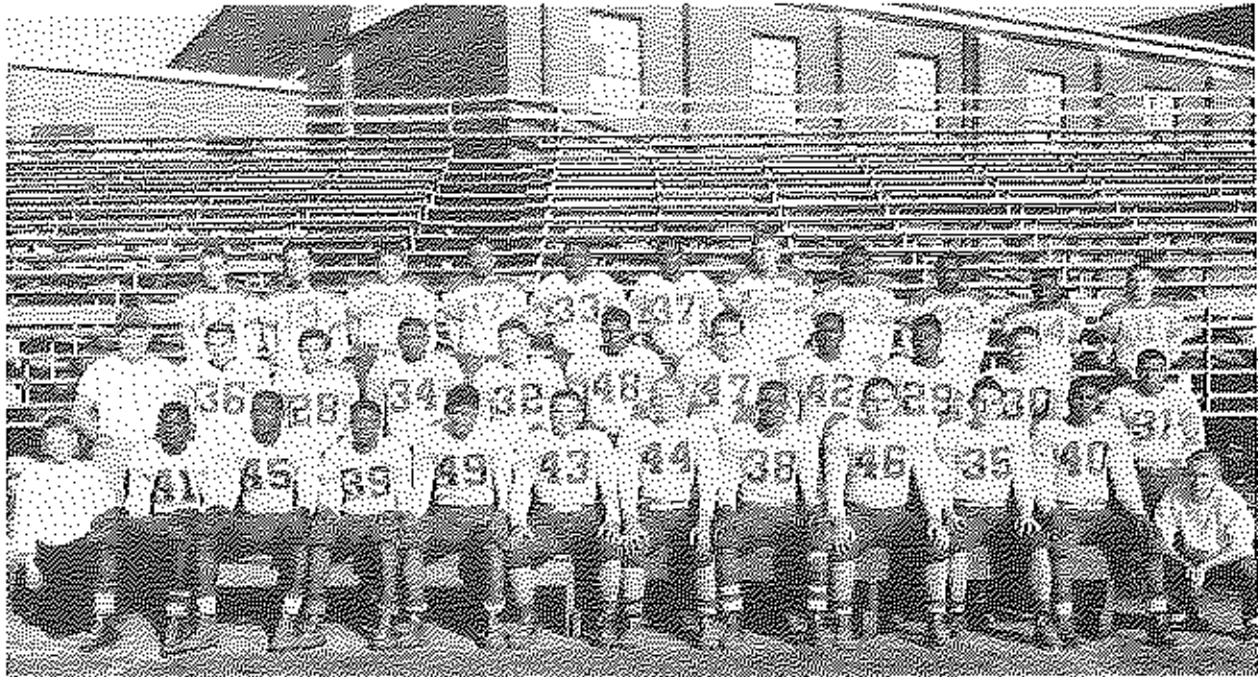
C. Trac L. Watts B. Welch F. White J. Willz D. Wilson



# OLIVER HIGH SENIORS



# FOOTBALL

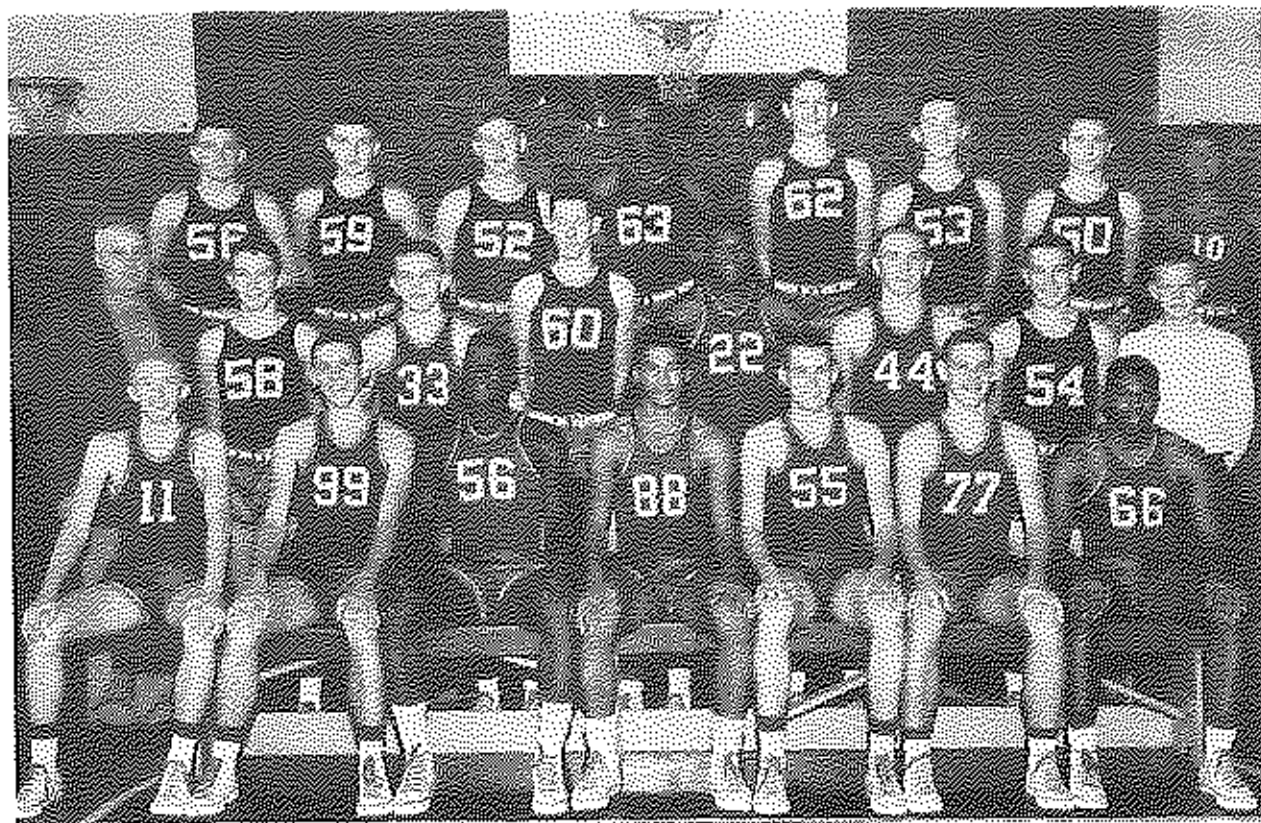


FIRST ROW; G. Sewell, P. Brooks, A. Brooks, Noland, Haggins, J. Scott, J. Harter, Burdell, J. Hall, R. Bach, E. Stewart, R. Glasscock. SECOND ROW: Coach Branham, B. Sewell, Guerrant Davis, G. Jones, Bell, C. Estes, Perkins, Frye, Puckett, Clay. THIRD ROW: Beckham, Phelps, J. Meriawether, Singleton, Lee, Green, Mitchel, Steward, Parker, Patton, Fox.

DATE	TEAM	SHAWNEES	VISITORS
Sept. 7	Irvine . . . . .	14	0
Sept. 14	Anderson . . . . .	13	7
Sept. 21	Shelbyville . . . . .	0	21
Sept. 27	Versailles . . . . .	40	19
Oct. 5	Cynthiana . . . . .	6	7
Oct. 12	Paris . . . . .	7	7
Oct. 19	Frankfort . . . . .	0	7
Oct. 26	Mt. Sterling . . . . .	44	0



# BASKETBALL



FIRST ROW: Winburn, K. Johnson, Brooks, Haggins, B. Johnson, Gibson, Bell. SECOND ROW: Coach Branham, Beckham, Puckett, Ferrell, Lee, Harter, B. Sewell, G. Sewell. THIRD ROW: Staton, Devary, Watts, Green, Clem, Phelps, H. Johnson, Jones.

	SHAWNEES	VISITORS
Camargo . . . . .	64	50
Madison . . . . .	55	48
Paris . . . . .	63	58
Irvine . . . . .	74	50
Mt. Sterling . . . . .	62	61
Clark County . . . . .	56	
Versailles . . . . .		
Henry Clay . . . . .		
Montgomery County . . . . .		
Nicholasville . . . . .		
Madison High . . . . .		
Mt. Sterling . . . . .		
Irvine . . . . .		
Cynthiana . . . . .		
Paris . . . . .		
Eastern . . . . .		
Georgetown . . . . .		
Clark County . . . . .		
Montgomery County . . . . .		
Cynthiana . . . . .		
Estill County . . . . .		
Nicholas County . . . . .		
Versailles . . . . .		



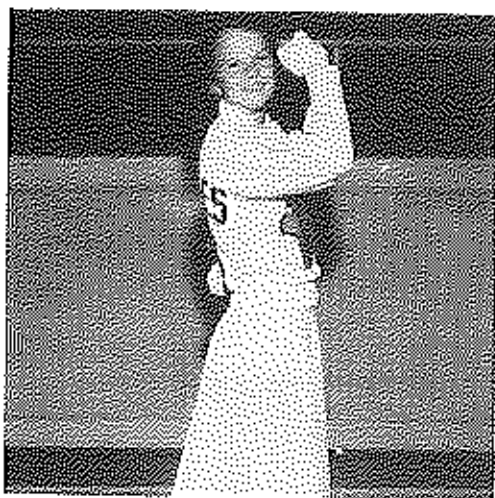
# CHEERLEADERS



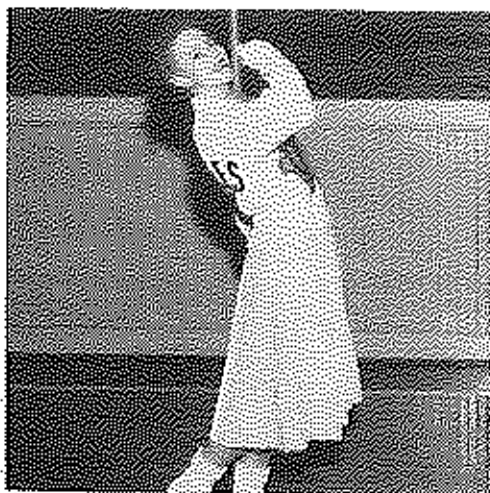
TAMMY HOLWICK



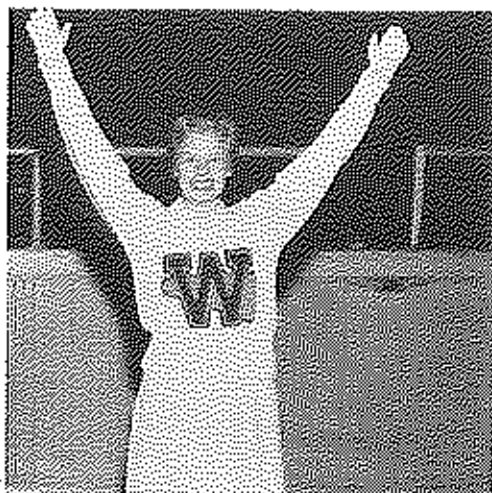
ETHEL JO STONE



BETTY SNOWDEN



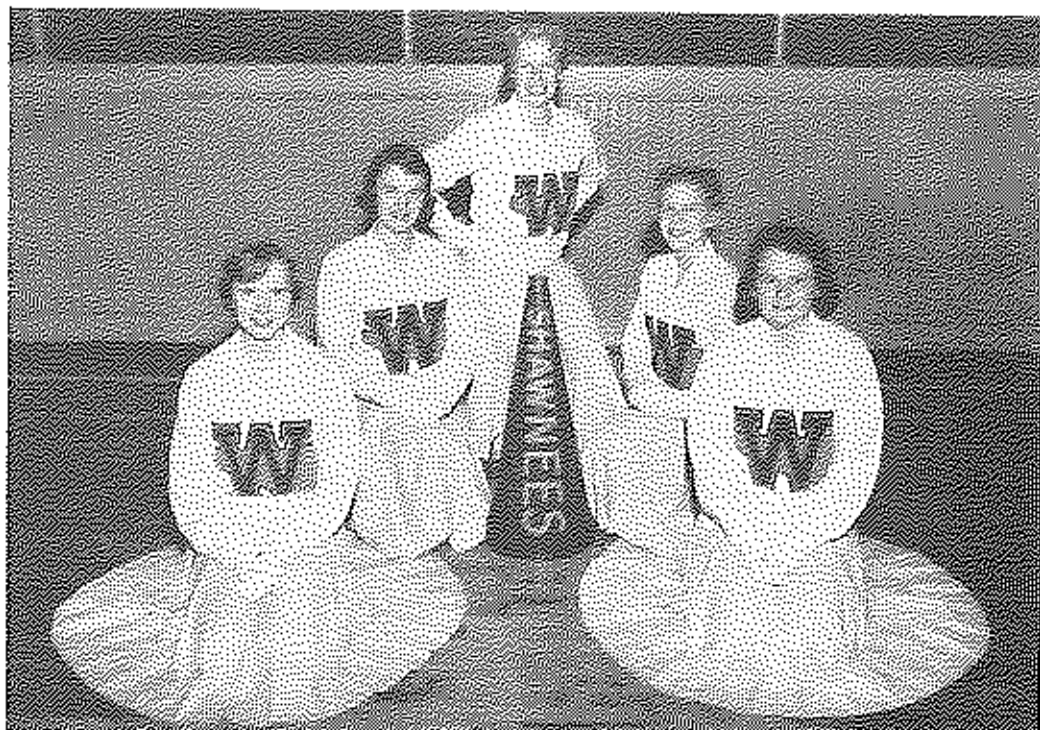
WICKIE BOGARD



ANN STANLEY JOHNSON



## A-TEAM



*Ethel Jo Stone, Tammy Holwick, Anne Stanley Johnson, Wickie Hogard, Betty Snowden.*

## B-TEAM



*Sue Quisenberry, Nancy Allan, Rose Lee Smyth, Sandra Smith, Katherine Fox.*