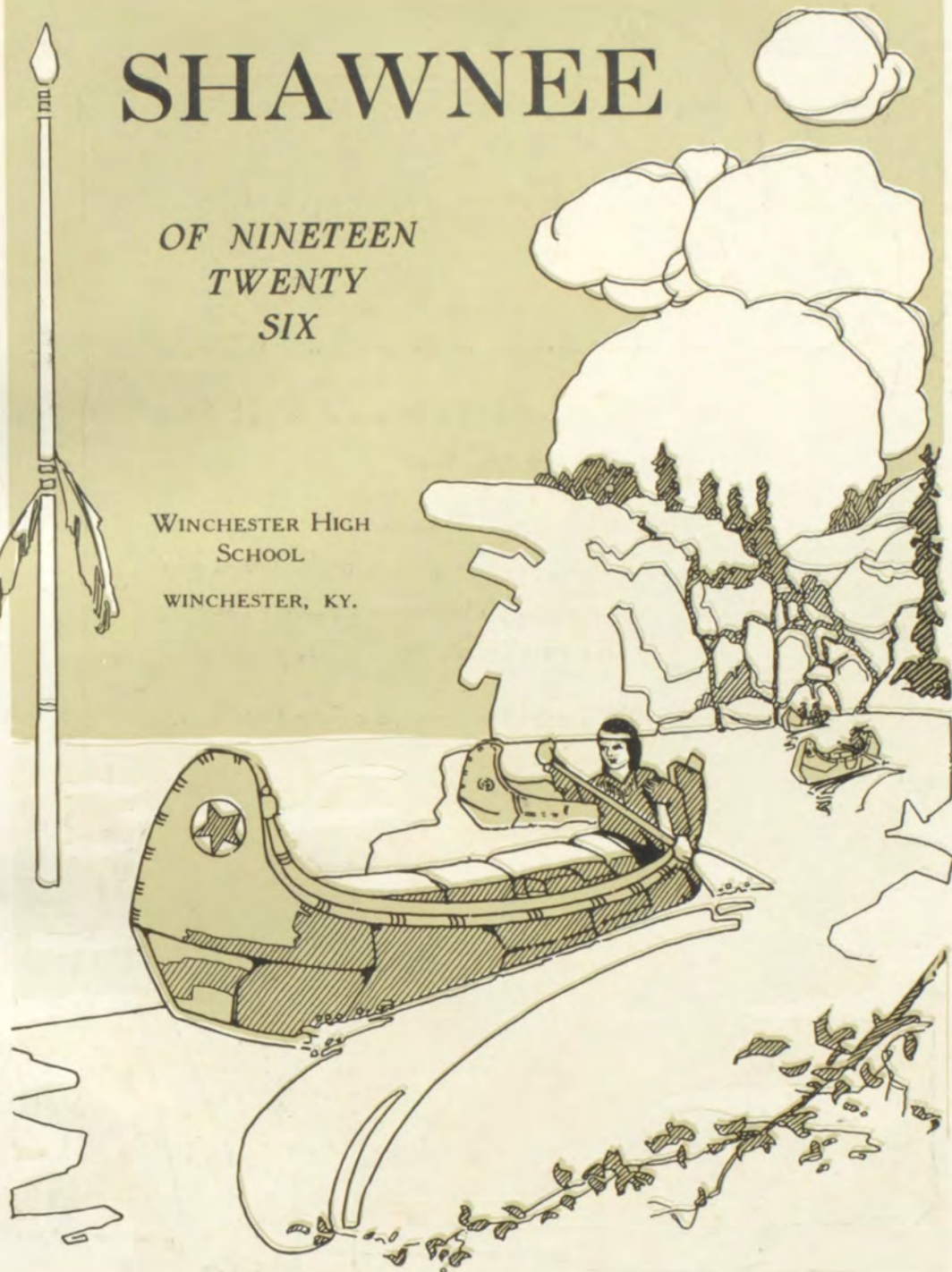
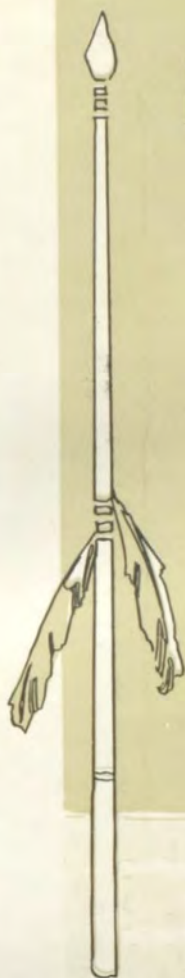


# SHAWNEE

OF NINETEEN  
TWENTY  
SIX

WINCHESTER HIGH  
SCHOOL  
WINCHESTER, KY.





## Board of Education

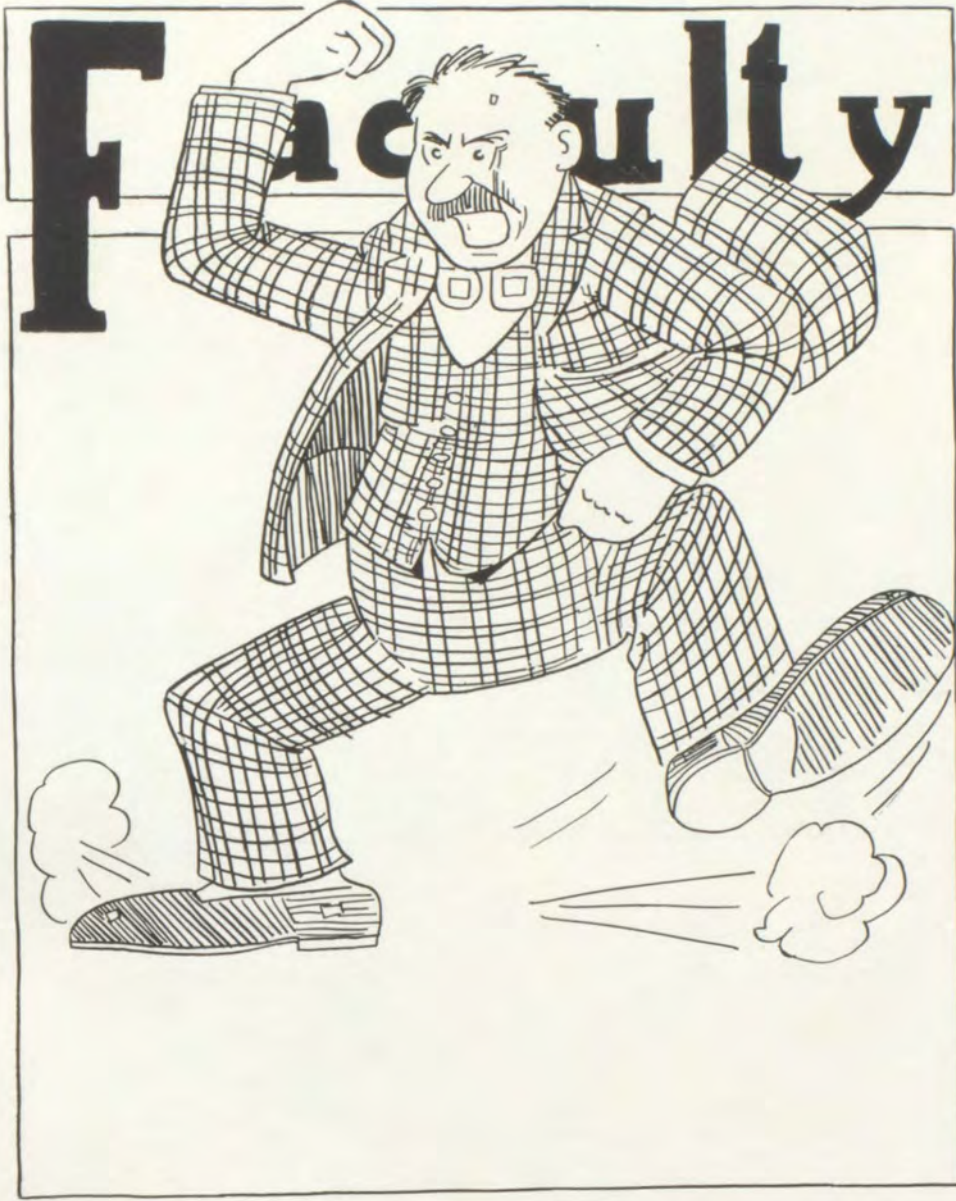
GEO. E. MOTCH, *President*

E. H. TAYLOR

S. W. POWELL

JOHN HARDING

J. H. GARDNER





SMITH



BETTS



CHAMPION  
*Principal*



TANNER



GORDON



CALLAHAN



LYLE



L ROADHURST



WOODWARD



RYAN



SMITH



SCOTT



TINCKOM



HAYS



BOTTS



FISHBACK



OLDHAM



CONOVER



GATSON



# SENIORS

From The End Of The Trail. By James Earl Fraser



### MALCOLM ROYSE

*Class President*

*Nickname:* Mac.  
*Favorite Pastime:* Making Announcements.  
*Favorite Expression:* Very Good  
*Economy:* Studying.  
*Extravagance:* Filibustering.  
*Eccentricity:* Curls.  
*Greatest Fault:* Cutting Physics Lab.  
*Greatest Accomplishment:* Getting by.  
*Destiny:* Merchant.

### JUNE BUSH HUNTER

*Class Secretary*

*Nickname:* Bush.  
*Favorite Pastime:* Dating.  
*Favorite Expression:* You know what I mean.  
*Economy:* Rouge.  
*Extravagance:* Curls.  
*Eccentricity:* Good disposition.  
*Greatest Fault:* Everyone's rival.  
*Greatest Accomplishment:* Running candy store.  
*Destiny:* Mrs. —.

### ADDISON WHITT

*Class Vice-President*

*Nickname:* Whitt.  
*Favorite Pastime:* Chasing Bushes.  
*Favorite Expression:* Why will I be so forgetful?  
*Economy:* Studying.  
*Extravagance:* New ties.  
*Eccentricity:* Big feet.  
*Greatest Fault:* Forgetful.  
*Greatest Accomplishment:* Leaving Clay City.  
*Destiny:* Auctioneer.



### WAVELYN HANKS

*Nickname:* Wavy  
*Favorite Pastime:* Takin' long shots.  
*Favorite Expression:* Goodness!  
*Economy:* Covering the basket.  
*Extravagance:* Defensive playing.  
*Eccentricity:* Spit curl.  
*Greatest Fault:* In too deep with Coach Smith.  
*Greatest Accomplishment:* To explain a ball in motion.  
*Destiny:* School teacher.

### EDWARD ALLEN STRODE

*Nickname:* Strubie.  
*Favorite Pastime:* Sliding his trombone.  
*Favorite Expression:* Too bad for me.  
*Economy:* Smiles.  
*Extravagance:* Blushes.  
*Eccentricity:* Silk hair.  
*Greatest Fault:* Indifference.  
*Greatest Accomplishment:* Acting.  
*Destiny:* Band master.

### CAPPIE SMITH

*Nickname:* Cap.  
*Favoirte Pastime:* Training chickens.  
*Favorite Expression:* I just wonder.  
*Economy:* Eats.  
*Extravagance:* Smiles.  
*Eccentricity:* Reserved.  
*Greatest Fault:* Over-study.  
*Greatest Accomplishment:* Sweet disposition.  
*Destiny:* Actress.

### JACK PROCTOR

*Nickname:* Proc.  
*Favorite Pastime:* Carrying furniture.  
*Favorite Expression:* Moonshiners.  
*Economy:* No make up on girls.  
*Extravagance:* Corsages.  
*Eccentricity:* Talks slow.  
*Greatest Fault:* Visiting Georgetown.  
*Greatest Accomplishment:* Dancing.  
*Destiny:* Oklahoma oil man.





### ELIZABETH KEFFER

*Nickname:* Liz.  
*Favorite Pastime:* Attending clubs.  
*Favorite Expression:* You know I didn't.  
*Economy:* Laughing.  
*Extravagance:* Quietness.  
*Eccentricity:* Reproving Holly.  
*Greatest Fault:* Member of A. Y. L. I.  
*Greatest Accomplishment:* Nervous breakdown.  
*Destiny:* Book agent.

### WALTER ALBERT

*Nickname:* Pat.  
*Favorite Pastime:* Smashing milk wagons.  
*Favorite Expression:* So's your Aunt Emmy.  
*Economy:* Smiles.  
*Extravagance:* Adhesive tape.  
*Eccentricity:* Big mouth.  
*Greatest Fault:* Girls.  
*Greatest Accomplishment:* Stop Thief.  
*Destiny:* Racing with motor cops.

### ELIZABETH SPEARS

*Nickname:* Libby.  
*Favorite Pastime:* Bell hopping for the principal.  
*Favorite Expression:* I'll leave it all to you.  
*Economy:* Cutting classes.  
*Extravagance:* Gas.  
*Eccentricity:* Playing with silver nitrate.  
*Greatest Fault:* Sleep.  
*Greatest Accomplishment:* Looking sad.  
*Destiny:* Dramatic actress.

### REUBEN DEVARY

*Nickname:* Reub.  
*Favorite Pastime:* Killing time.  
*Favorite Expression:* Do like the Seniors.  
*Economy:* Hats.  
*Extravagance:* Gasoline.  
*Eccentricity:* Red hair.  
*Greatest Fault:* Girl-shy.  
*Greatest Accomplishment:* Superintendent of schools.  
*Destiny:* Farmer.

### FLORENCE BOTTS

*Nickname:* Hippie.  
*Favorite Pastime:* Raving.  
*Favorite Expression:* I ain't proud.  
*Economy:* Grades.  
*Extravagance:* Chewing gum.  
*Eccentricity:* A Senior.  
*Greatest Fault:* Noise.  
*Greatest Accomplishment:* Recitation without preparation.  
*Destiny:* Experimenting with Chemistry.

### MARION WOODFORD BISHOP

*Nickname:* Bish.  
*Favorite Pastime:* Working Algebra.  
*Favorite Expression:* Cuss words.  
*Economy:* Courting.  
*Extravagance:* Big words.  
*Eccentricity:* Temper.  
*Greatest Fault:* War Whoop.  
*Greatest Accomplishment:* Associating with James William in History.  
*Destiny:* Editor of the Winchester Sun.

### EVA BALLARD

*Nickname:* Evy.  
*Favorite Pastime:* Translating Cicero.  
*Favorite Expression:* Ask Chester.  
*Economy:* Biology Lab. Periods.  
*Extravagance:* Note books.  
*Eccentricity:* Likes red and green combined.  
*Greatest Fault:* Knows too much.  
*Greatest Accomplishment:* Learning to cook for two.  
*Destiny:* A married lady.

### WOODFORD HUGHES

*Nickname:* Wood.  
*Favorite Pastime:* Drawing signs.  
*Favorite Expression:* That's what I meant to say.  
*Economy:* Studying figures.  
*Extravagance:* Thinking.  
*Eccentricity:* Wears such stiff collars.  
*Greatest Fault:* Wide awake at two forty-five.  
*Greatest Accomplishment:* An A on Physics test.  
*Destiny:* Mechanic.





### VIRGINIA SMITH

*Nickname:* Va.  
*Favorite Pastime:* Driving a car.  
*Favorite Expression:* I don't know.  
*Economy:* Words.  
*Extravagance:* Nerves.  
*Eccentricity:* No one knows it.  
*Greatest Fault:* Quiet.  
*Greatest Accomplishment:* Keeping her mouth shut at the right time.  
*Destiny:* Chemistry teacher.

### LOUIE FRIEDMAN

*Nickname:* Louie.  
*Favorite Pastime:* Eating peanuts.  
*Favorite Expression:* Yeas.  
*Economy:* Shoe polish.  
*Extravagance:* Explaining static and electricity to Prof. Smith.  
*Eccentricity:* Minus a tonsil.  
*Greatest Fault:* Stuttering.  
*Greatest Accomplishment:* Fiddling.  
*Destiny:* Salesman.

### EDITH SIPPLE

*Nickname:* Sip.  
*Favorite Pastime:* Talking about her Ray.  
*Favorite Expression:* Ray likes it, too.  
*Economy:* Days in school.  
*Extravagance:* Stepping on the gas.  
*Eccentricity:* Carrying mistletoe in the top of her car.  
*Greatest Fault:* Singing.  
*Greatest Accomplishment:* Horseback riding.  
*Destiny:* Florida society.

### ROY FOX

*Nickname:* Beans.  
*Favorite Pastime:* Talking to Nick.  
*Favorite Expression:* Oh, beg pardon, sir.  
*Economy:* Digesting Shakespeare.  
*Extravagance:* Listening.  
*Eccentricity:* Tranquility.  
*Greatest Fault:* Agreeing.  
*Greatest Accomplishment:* Forty words.  
*Destiny:* Journalism.

LOLA VIRGINIA STEVENS

*Nickname:* Ginger.  
*Favorite Pastime:* Learning to cook.  
*Favorite Expression:* My goodness!  
*Economy:* Words.  
*Extravagance:* Food.  
*Eccentricity:* Thoughtfulness.  
*Greatest Fault:* Literature read.  
*Greatest Accomplishment:* Hammering the typewriter.  
*Destiny:* School teacher.

NICHOLAS WINN WILLIAMS

*Nickname:* Nick.  
*Favorite Pastime:* Annoying "Sugar."  
*Favorite Expression:* Etc.  
*Economy:* Girls.  
*Extravagance:* Using big words.  
*Eccentricity:* ~~Pro~~city.  
*Greatest Fault:* Procrastination.  
*Greatest Accomplishment:* Sleep in History class.  
*Destiny:* Orator.

SALLIE ELLEN WILLS

*Nickname:* Sallie.  
*Favorite Pastime:* Typing for Mr. Champion.  
*Favorite Expression:* Come on, Eva.  
*Economy:* Afternoons in school.  
*Extravagance:* Marcell.  
*Eccentricity:* Quietness.  
*Greatest Fault:* Trying to be Green.  
*Greatest Accomplishment:* "A" on Physics test.  
*Destiny:* Stenographer.

JAMES WILLIAM POYNTER

*Nickname:* Jim Billie.  
*Favorite Pastime:* Loafing at Dinty Moore's.  
*Favorite Expression:* I don't understand that.  
*Economy:* Hair Groom.  
*Extravagance:* Thank you's.  
*Eccentricity:* ~~C~~  
*Greatest Fault:* Flirting with the ladies.  
*Greatest Accomplishment:* Preparing his lesson.  
*Destiny:* Train engineer.





### VIRGINIA OLIVER

*Nickname:* Prissy.  
*Favorite Pastime:* Staying at no one house.  
*Favorite Expression:* You would do something like that.  
*Economy:* Coca-Cola.  
*Extravagance:* Shampoo.  
*Eccentricity:* Walking to ball games.  
*Greatest Fault:* Dislike of red hair.  
*Greatest Accomplishment:* Sews well.  
*Destiny:* Own a ladies' ready-to-wear-shop.

### STEELE DUDLEY

Originally a member of the Class of '26, but withdrew before the end of the school year.

### ELIZABETH SCRIVENER

*Nickname:* Scriv.  
*Favorite Pastime:* Thinking.  
*Favorite Expression:* Oh, well, have your way.  
*Economy:* Dates.  
*Extravagance:* Study.  
*Eccentricity:* Knowledge of geometry.  
*Greatest Fault:* Chewing gum.  
*Greatest Accomplishment:* Charlestoning.  
*Destiny:* Old maid.

### MARY FRANCES KERR

*Nickname:* Kerr-Baby.  
*Favorite Pastime:* Translating French.  
*Favorite Expression:* Ye gods and little fishes!  
*Economy:* Curls.  
*Extravagance:* Cars.  
*Eccentricity:* Buying chocolate caramels.  
*Greatest Fault:* Chemistry experiments.  
*Greatest Accomplishment:* Tickling the ivories.  
*Destiny:* Private secretary to Prof. Champion.

### JULIA PROCTOR

*Nickname:* Sis.  
*Favorite Pastime:* Chewing gum.  
*Favorite Expression:* So would I.  
*Economy:* Barrettes.  
*Extravagance:* Long distance calls to Louisville.  
*Eccentricity:* Very quiet.  
*Greatest Fault:* Studies too much.  
*Greatest Accomplishment:* Play basketball.  
*Destiny:* Keep boarding house.

### MARY BELLE STONE

*Nickname:* Stone.  
*Favorite Pastime:* Hammering the ivories.  
*Favorite Expression:* Well, of all things!  
*Economy:* Words.  
*Extravagance:* Cosmetics.  
*Eccentricity:* Eyes.  
*Greatest Fault:* Non-talkative.  
*Greatest Accomplishment:* Music.  
*Destiny:* Concert artist.

### ANNA MARGARET HART

*Nickname:* Hart.  
*Favorite Pastime:* Keeping store.  
*Favorite Expression:* Well, shucks!  
*Economy:* Walking.  
*Extravagance:* Energy.  
*Eccentricity:* Playing the piano.  
*Greatest Fault:* Eating in school.  
*Greatest Accomplishment:* Being a senior.  
*Destiny:* Beauty specialist.

### ELOISE FISHER

*Nickname:* Fatty.  
*Favorite Pastime:* Oh, my gracious.  
*Economy:* Days in school.  
*Favorite Pastime:* Making musical engagements.  
*Favorite Expression:* Oh, my gracious!  
*Extravagance:* Banking notes.  
*Eccentricity:* Those flowing locks.  
*Greatest Fault:* Being on time.  
*Greatest Accomplishment:* An English exemption.  
*Destiny:* Musician.





### VIRGINIA BUSH

*Nickname:* Bush.  
*Favorite Pastime:* Substituting for Tinckom.  
*Favorite Expression:* Don't tell Bushie.  
*Economy:* Walking.  
*Extravagance:* Home Ec. supplies.  
*Eccentricity:* Permanent wave.  
*Greatest Fault:* Size.  
*Greatest Accomplishment:* Passed in Caesar.  
*Destiny:* Rural school marm.

### ELIZABETH MUHLEMAN

*Nickname:* Muhleman.  
*Favorite Pastime:* Talking.  
*Favorite Expression:* Vernon says so.  
*Economy:* Knowledge.  
*Extravagance:* Weight.  
*Eccentricity:* Man-hater.  
*Greatest Fault:* Flapper.  
*Greatest Accomplishment:* Graduation.  
*Destiny:* The Follies.

### IVA DEE HEMPHILL

*Nickname:* Ivy.  
*Favorite Pastime:* Talking to Strubie.  
*Favorite Expression:* I never would have thought it.  
*Economy:* Ink.  
*Extravagance:* Different shades of rouge.  
*Eccentricity:* Baby-like.  
*Greatest Fault:* Bill.  
*Greatest Accomplishment:* Basketball.  
*Destiny:* To coach Clark County High.

### THELMA CAWOOD

*Nickname:* Big Smoke.  
*Favorite Pastime:* Driving Hezekiah.  
*Favorite Expression:* I just didn't do it!  
*Economy:* Beaux.  
*Extravagance:* Good nature.  
*Eccentricity:* Math star.  
*Greatest Fault:* Dieting.  
*Greatest Accomplishment:* Sub on basketball team.  
*Destiny:* Librarian.



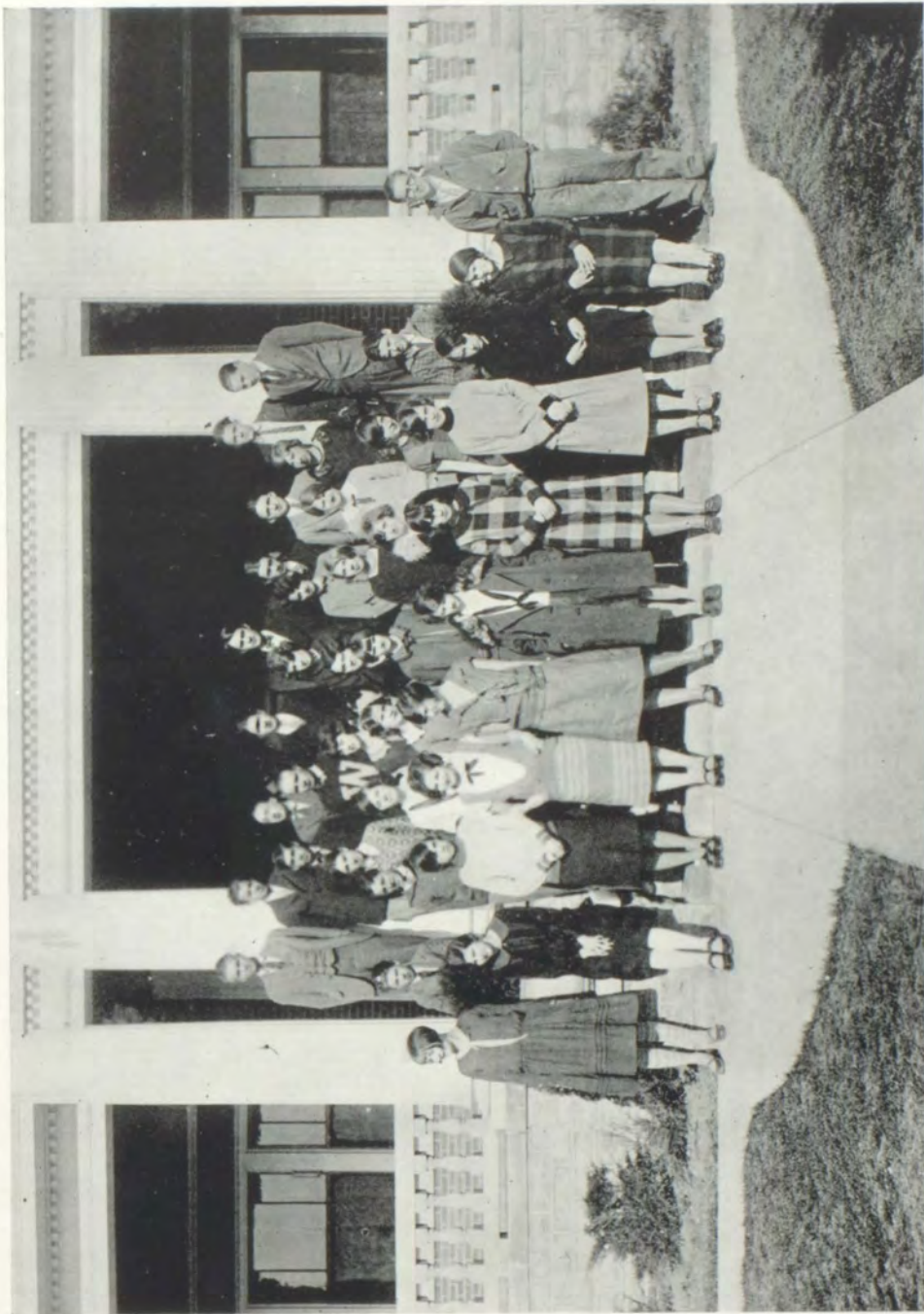
# JUNIORS



## Junior Class Roll

JACK HARDWICK . . . . . *President*  
 LOUISE CHARLTON . . . . . *Vice-President*  
 CHARLES PALMETER . . . . . *Secretary*

FRANCES MORTON BALLARD	MARTHA HARDESTY	FRANK MANN
LUDA BOWER	FERN HARRIS	WILLIAM MARKER
KATHERINE BYARS	SELMA HOVIS	ANA MARTIN
MILFORD CARR	WALKER HUMBLE	JOSEPHINE MEFFORD
WEBB COWAN	CLARA AGNES JACKSON	EVERETT MOORE
WILLIAM CROW	IVAN JETT	MARGARET ELLIS MOTCH
HOWARD DOMIGAN	MARK KELLEY	NANCY MUHLEMAN
ROGER DOYLE	OLIVIA KIDD	VIRGINIA NAVE
RAY ELKIN	VIRGINIA LANDER	ELIZABETH NEAL
CARLEEN GRANT	ELIZABETH MCGUIRE	OWEN OGDEN
	PERRY OWEN	ELEANOR SIBLEY
	DORRIS RAMSEY	HOLLY SPHAR
	ANNA MAYHEW RATLIFF	ERNEST STRODE
	DAVID REED	ELIZA SWOPE
	JOE RICH	CURTIS TODD
	DICK SHEPHERD	BUFORD UPHAM
	WILLIE SHEPHERD	FLOSSIE WALLACE
	MODENA SCRIVNER	MINNIE LOIS WITT





## Sophomore (A) Class Roll

MARGARET TAYLOR . . . . . *President*  
 MARGUERITE HARNEY . . . . . *Vice-President*  
 ROBERT GREEN . . . . . *Secretary-Treasurer*

SYDNEY BAUGH	DOROTHY MCPHERSON
EVELYN BROCK	J. B. PLANCK
LEMOIS DANIEL	EMMETT RASH
ELIZABETH DRAKE	LEORA RENAKER
DONALD ELLIOT	KATHRYN SCOBEE
NANCYE RUTH ENDICOTT	H. B. SKINNER
LUCY ESTIS	JACK SOUSLEY
LUCIE GILLON	CHARLES SPENCER
EVA BELLE GORDON	JOHN STAPLETON
GENEVIEVE GREEN	ALTA STEVENS
ALBERT BUSH HAGGARD	JOHN STEVENSON
BETTY HARDING	STERLING TAYLOR
GLYNN HIND	KATHLEEN THOMPSON
ANN JAMESON	ROY TODD
LEMA LANTER	LUCILLE WATTS
RUTH ELIZABETH LINDSAY	LENORA WEBB

## Sophomore (B) Class Roll

MAUD SNOWDEN . . . . . *President*  
 MARGUERITE CARR . . . . . *Vice-President*  
 SALLIE ADAMS . . . . . *Secretary-Treasurer*

HERMAN ACKERMAN	JAMES MAHAN
JOHN BOARD	RUTH MERS
BRYANT CRUMP	DAVID POWELL
MYRWIN DUFF	DOROTHY RAMSEY
MYRVIN DUFF	NANNIE STEVENS
MARGARET ESTIS	OTTIS STIPP
MARION FRENCH	MARY TARPY
ROBERT HAMPTON	GIBSON TAYLOR
LEROY WALDEN	EARNEST WILDER



## Winchester High School Alumni

1925

MARY OVERSTREET BOWER	SADYE R. PLUMMER
WILLIAM CURTIS CAYWOOD	ELIZABETH SPENCER
MARTHA LEE EVANS	FLOYD WEBB
ROBERT GEORGE	CATHERINE COX COURTNEY
BEN GREEN	MARY GRAY DUNNIGAN
EDWARD OWINGS GUERRANT	JOHN PARKER GARDNER
EMILY RUTH HIND	VERSER GILLON
INEZ LAURA HUMBLE	HARRY GREEN
MARY ELIZABETH MYERS	WILLIAM HAYS
WALLER CHENAULT PHELPS	BOSWELL B. HODGKIN
SAMUEL LEVY	
JOHN LISLE McCORD	
FRANCES E. PLANCK	
ELEANOR TAYLOR SIMPSON	
FRANKLIN W. STEVENSON	
TOM WILLIAMS	

1924

FRANK ADCOCK	OTIS JETT
WARREN BANKS	BATSON PALMETER
NANCY CAWOOD	MRS. MARGARET KARGER
MARY LILLIE COOPER	CHARLES BAILEY
DELLA FRIEDMAN	ANABEL BROCK
MARY FRANCES HARDING	VIRGINIA COCHRAN
RUBY HANKS	STANLEY DAVID
EVELYN HENRY	ELIZABETH HARDESTY
VIVIAN HARDMAN	
HAZEL HARRIS	
LUCY HUNTER	
GOLDIE NELSON	
JOSIE RUPARD	
MILDRED TODD	
FLORINE WILSON	

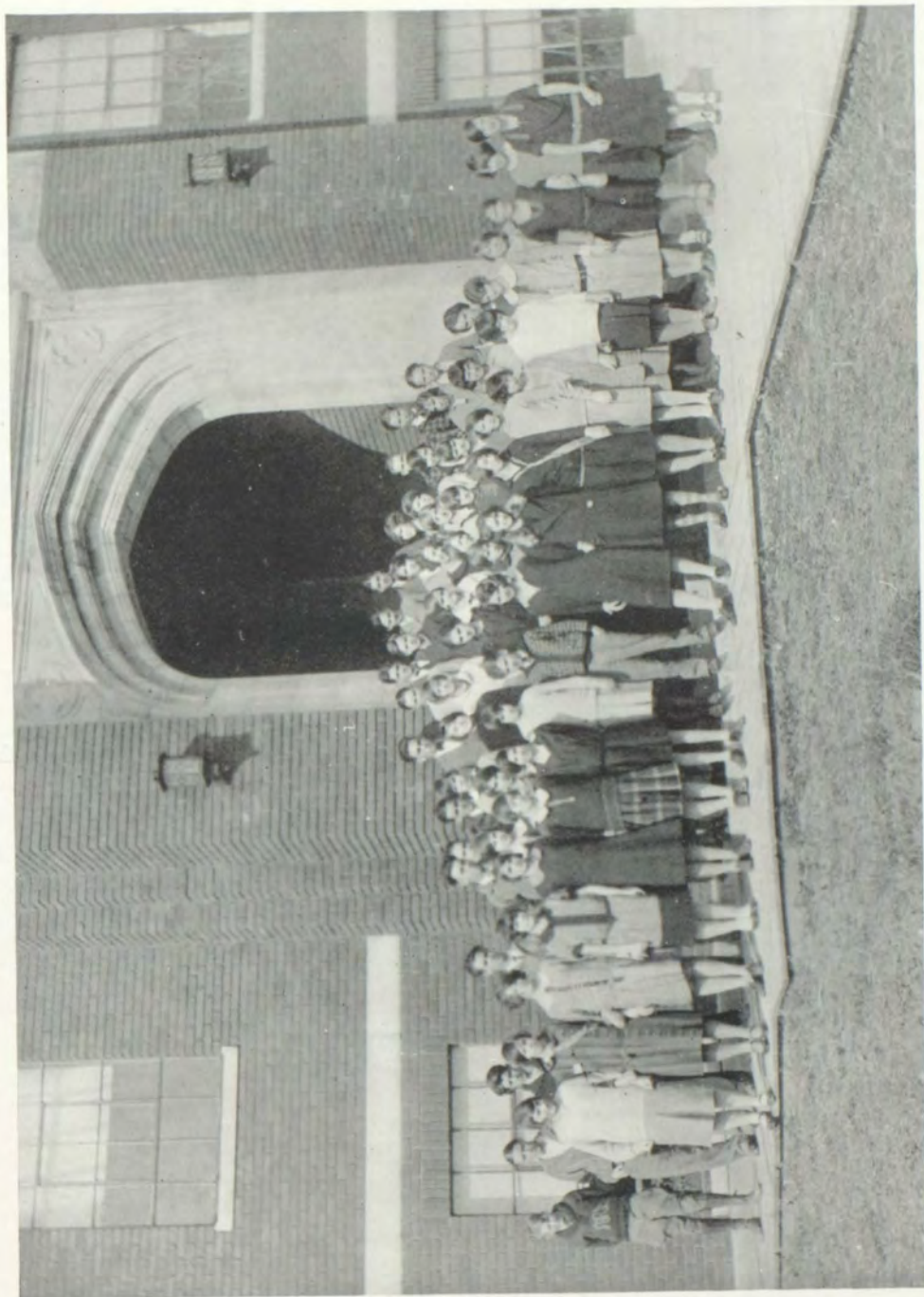
## Ninth Grade Roll

JAMES OSBORNE . . . . . *President*  
 SERELDA BISHOP . . . . . *Vice-President*  
 JANE PAYNTER . . . . . *Treasurer*  
 MARY LOUISE WHITESIDE . . . . . *Secretary*

ALTA MAE ALDRIDGE	MILDRED GREEN
CAROLYN ARNOLD	OPAL GRAY
ERMA BAUGH	RAY GRAVITT
MARION BAUGH	LUTHER GRAVITT
RICHARD BOXLEY	SALLY GRAVITT
HILDA BUSH	EMILY HARRISON
ELBONNA BRANTLEY	LEILA HARDMAN
GEORGIA COLE	RUTH HENRY
RALPH CORNETT	PATSY CLAY HENSLEY
HELEN CRUMP	HAROLD HUNT
PAULINE CRUSE	JUANITA IDDINS
EDNA DOUGLAS	GERTRUDE JONES
ESTHER RAY DUNNIGAN	MARY LEE KEFFER
HYMAN EDWARDS	LOUISE KENNEDY
LEON GATSON	RUTH LEACH
LUCILLE GILBERT	EDGAR MCKEE
FLEMING GILBERT	DOROTHY MARKER

SUSIE MASTIN  
 PRUITT MONROE  
 HOWARD MONROE  
 CHESTER MONROE  
 NANNIE MERRITT  
 MAGGIE PARRISH  
 MARQUIS GAY POWELL  
 MARSHALL RANKIN  
 FRANCES RAMSEY  
 RUBY SKINNER  
 EULA SANDLIN  
 ELIZABETH STROTHER  
 SARA E. STEVENSON  
 HAZEL WEBB  
 GLADYS WILLS  
 JEAN WHITESIDE  
 BURNS YOUNG







## Eighth Grade Roll

NAOMI ACKERMAN	BESSIE JOHNSON	CHRISTINE OWEN	CORDELIA SHEARER
ELIZABETH BEAN	HAROLD JONES	BILLY PENDLETON	KERMIT SMITH
WILLIAM ROGER BROCK	EDNA KIRKPATRICK	ROSA LEE POSTON	NEAL SWARTZ
MARGARET BUSH	ELIZABETH MCPHERSON	ALBERT RICH	THOMAS TODD
ROBERT BOTTS	GORDON MARTIN	HELEN RAMSEY	TOM TIPTON
JACK BOWSER	JOE NOLAND	EMILY REEVES	GEORGE WARE
IMOGENE CANNOY	EMMA OSBORNE	DEXTER RICH	DAVID WATTS
ANNA KATHERINE CROW	BRUNA HICKERSON	RAYMOND SNOWDEN	DORA ADAMS
CHARLES CARRITHERS	JAMES HOWELL	RUTH SIPPLE	CARL BOONE
SUSIE DILLON	WILLIAM HELWIG	MABEL SNOWDEN	BILLY BROOKS
JEANNETTE EASTIN	MABEL HADDEN	JOSEPHINE THOMPSON	LEON BOONE
NETTIE FRIEDMAN	LEVODIS HOLIDAY	MARGUERITE TEMPLE	ELVA BOWER
NORINE GORDON	MACK HUNTER	HAZEL TAYLOR	JOHN BURTON
ADELEEN GILBERT	W. Y. JONES	WADE WITMER	DAVID CRAYCRAFT
WILLIS HISLE	MARY FRANCES JONES	GEORGE PALMETER	MILDRED CUNDIFF
JEAN HARRIS	CLARENCE KIDD	CHARLES PLANCK	SARAH MARGARET DAVID
NANCY HODGKIN	LOUELLA MCCLELLAN	LILLIAN POWELL	VELMA DANIELS
EUGENE HARDWICK	MARY LEE MAHAN	FRANCES RAMSEY	FRANK ECTON
ELLA MAE HUMBLE	MARIE MERS	THOMAS RAWLINS	DOUGLAS GOFF
MARGARET IRVIN	ELIZABETH OGDEN	GLADYS RYCE	PAULINE GORDON
	DAISY RICHARDSON		



## Seventh (A) Grade Roll

WAYNE ADAMS  
 HOWARD BAILEY  
 ETHEL MAE BAYLESS  
 OSCAR BROCK  
 ANNA JEAN BLACKBURN  
 MABLE CHARLTON  
 VIRGINIA ANN CODELL  
 RAYS CREWS  
 EMILY CLAY  
 ELDEN FOX  
 ANNA BRUCE GORDON  
 GENEVIEVE HATTON  
 MARY MILDRED HUNT  
 KATHERINE LYON  
 LILLIAN MARSHALL  
 KATHLEEN MARTIN  
 CARRIE LEE MERRITT  
 STANFORD NEAL  
 BERNICE NORTON  
 LANTZ OGDEN

ELIZABETH OWEN  
 MARIE OWEN  
 HANNAH ROSEN  
 IRMA SCOTT  
 LEON SNOWDEN  
 UNA DELL STONE  
 ELIZABETH TANNER  
 DAVID THOMAS  
 FRED WADE  
 MITCHELL WEBB  
 BEATTY YOUNG  
 VIRGINIA BAILEY  
 RUBY BARNETT  
 CLYDE BROADUS  
 FENTON BOXLEY  
 FRANK CAWOOD  
 ROSE MARY CODELL  
 MILDRED CORNETT  
 MARY ALICE CRUMP  
 G. C. FLUTY  
 MARY FRANCES GAY

MARY LOUISE HADDEN  
 BILLY HOVIS  
 BLANCHE JORDON  
 MABLE MARKER  
 LUCILE MONROE  
 FRANCES MCGUIRE  
 FREDRICK MOORE  
 HOWARD NICHOLS  
 AMY NUNLEY  
 FRANCES OSBORNE  
 JESSIE OWEN  
 MARY LOUISE PACE  
 DOUGLAS RYE  
 MARY SCOBEE  
 W. R. SPHAR, JR.  
 WILLIAM SUDDUTH  
 JOSEPHINE TANNER  
 GARNER VALLANDINGHAM  
 EARL WALTERS  
 DEWARD WILDER




## Seventh (B) Grade Roll

HARRID ADAMS	WILLIAM MARTIN	JAKE GREEN
WENDELL BROCK	MARY FRANCES NICKELS	FANNIE HERMAN
FLOYD BURSE	RUTH PACE	LOIS JONES
ROBERT BLANKENSHIP	CRYSTINE RYE	MOUNT ETNA MORRIS
FLORENCE CHILDERS	SIBBIE RYCE	ALICE MCCREA
JAMES EASTIN	EMMA SNOWDEN	MATT G. NUNNELLEY
ROBERT EPPERSON	ROBERT ALLEN STEWART	ALICE M. NUNNELLEY
ELIZABETH EUBANKS	WILLIAM WATTS	MARGARET OWEN
DORA LEE GRAY	BARBARA ARNOLD	BERNICE OWEN
SHERMAN GRAY	GEORGE BROOKS	CECIL PATTON
WILMOTT GRIGS	JAMES BUSH	ERNEST PAYNTER
OSCAR GADSEN	ELIZABETH BIBB	MARION ROSEN
BERTHA GOODPASTER	LUCILLE BAUGH	KATHRYN RICH
MARION GLENN	FRED COLE	MARTICIA SIBLEY
RAMOND GILVIN	ROY DENNIS	FRANK STROTHER
KENNETH HANKS	FLORENCE K. ECTON	MORTON TALBOTT
JAMES HATTON	CLARA FLEENOR	EDWARD TAYLOR
DAISY HOLIDAY	CECIL GILBERT	JEAN UPHAM
LUTIE LANDRIGAN	MARVIN GREEN	FLORINE VALLANDINGHAM
NATHAN LEVY	RANDOLPH HARDMAN	EDNA WILDER
NELSON McDONALD	ANNA KATHERINE HOLLAR	GLADYS WEBB
FRANCES MARTIN	KENNETH LAWRENCE	



Book Four

athletics



## Tennis Club

EDWARD ALLEN STRODE . . . . . *President*

DORRIS RAMSEY . . . . . *Vice-President*

ELIZABETH KEFFER . . . . . *Secretary-Treasurer*

MARION BISHOP	ELEANOR SIBLEY
BETTY HARDING	KATHRYN SCOBEE
ESTHER RAY DUNNIGAN	EMMETT RASH
IVAN JETT	ERNEST STRODE
HOLLY SPHAR	MARGARET TAYLOR
EVA BELLE GORDON	KATHLEEN THOMPSON
VIRGINIA LANDER	MAC HUNTER
OWEN OGDEN	BUFORD UPHAM
MALCOLM ROYSE	MINNIE LOIS WITT

MARY FRANCES KERR  
 CURTIS TODD  
 THELMA CAWOOD  
 DOROTHY MCPHERSON  
 KATHERINE BYARS  
 ELIZABETH MUHLEMAN  
 W. R. CHAMPION  
 L. C. CALLAHAN  
 M. B. OLDHAM  
 MISS VERA CONOVER



FOOTBALL TEAM

