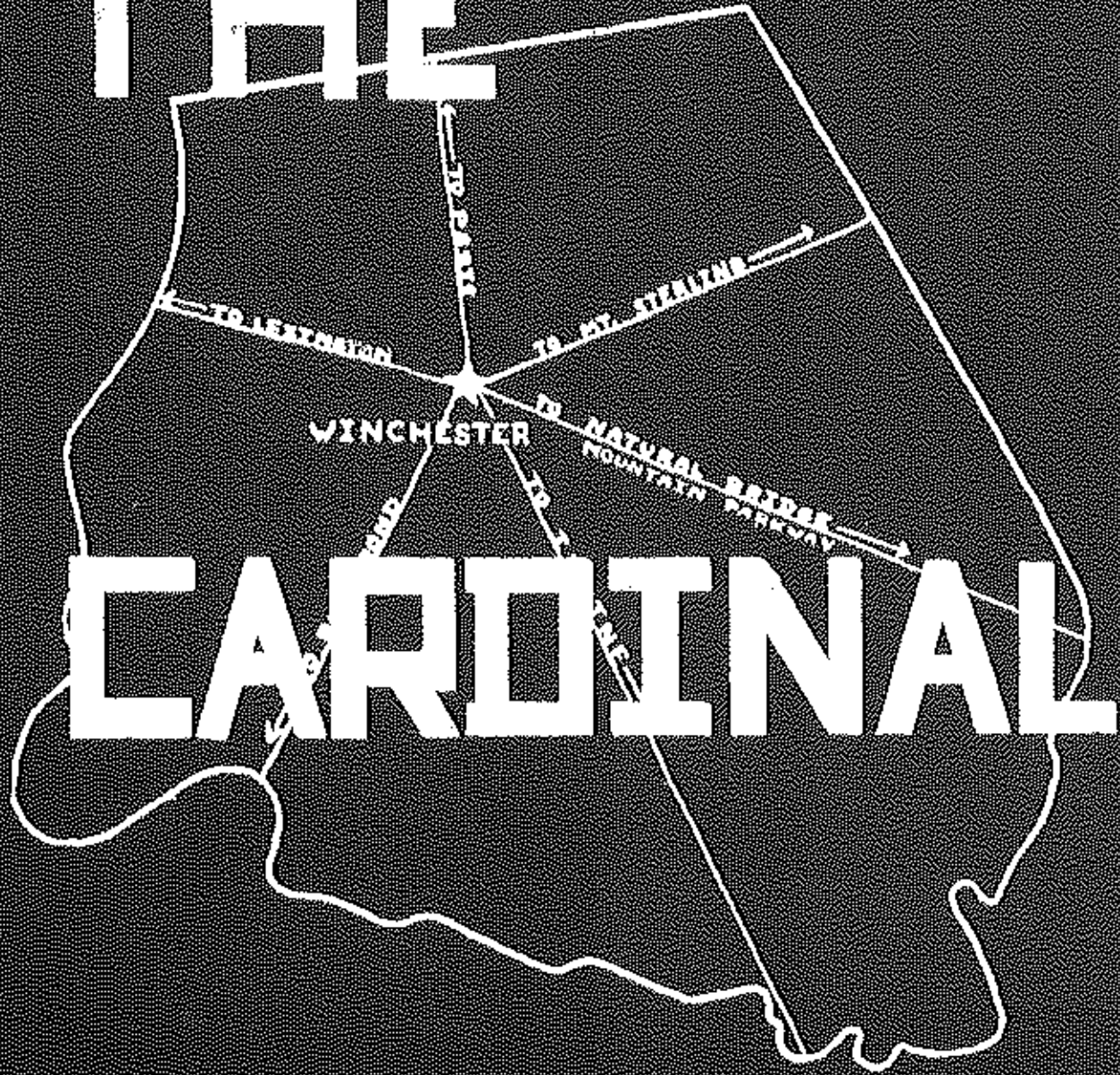
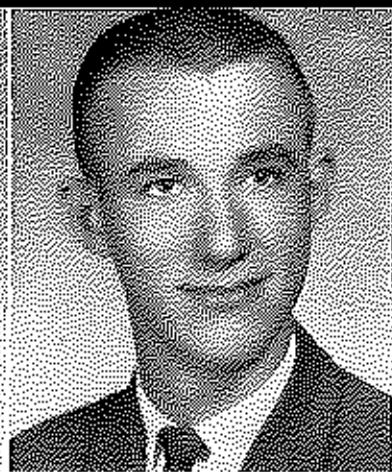
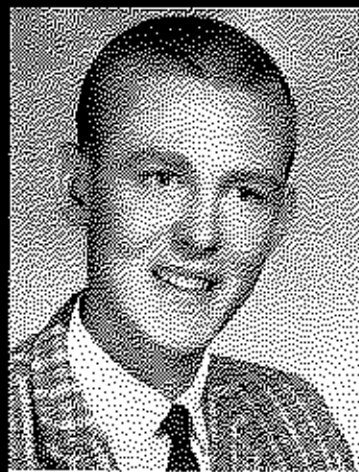


# THE



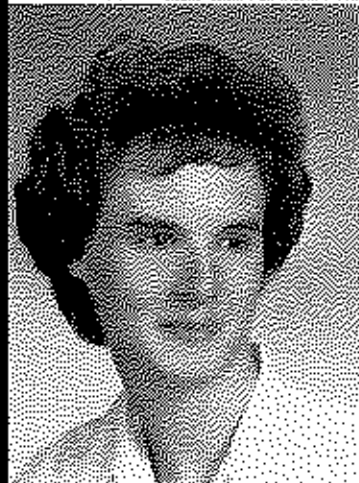
# CARDINAL

# 1963



CLYDE ABNER  
(Tinnestippers)  
Annual Staff 2

CARL WAYNE ABNEY  
(Earl)  
Cross Country 3



JANICE FAYE ADAMS  
(Janice)

Pep Club 1; F. H. A. 1, 2, 3, 4; Historian 4; Tri-Hi-Y 2; Chorus 2, 4; Library Assistant 2, 3, 4

LULA FRANCES ALDRIDGE  
(Lula)

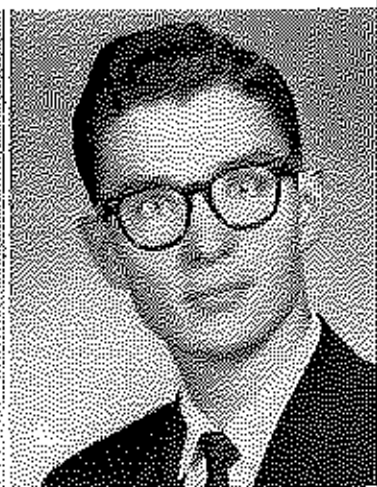
F. H. A. 1, 2, 3, 4; Historian 4; Tri-Hi-Y 4; Pep Club 1, 4

LINVA LOU ALLEN  
(Lynne)

F. H. A. 1, 2, 3, 4; F. T. A. 4; Tri-Hi-Y 1, 2, 3, 4; Chorus 1, 3, 4; Annual Staff 3, 4; National Thesplan Society 4; Pep Club 1; Drama Club 3, 4; Select Choir 4

BEVERLY QUINTON ALLEN  
(Bev)

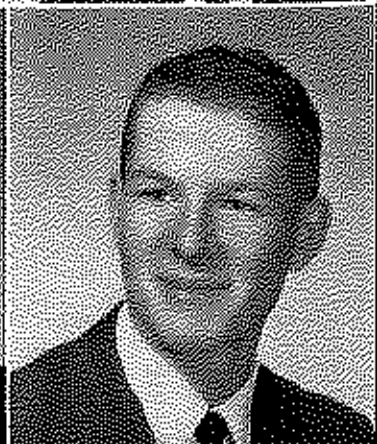
Pep Club 3, 4; Math Club 3; Beta Club 3, 4; Mu Alpha Theta 3, 4; F. T. A. 3; First Place in K. I. A.; National Science Foundation Scholarship 3



WILLIAM HARRISON ASHLEY  
(Bill)

Pep Club 1, 3; Manager 3; Hi-Y 4; Basketball 2; Treasurer of Class 4

ROBERT CARL BAILEY  
(Bobby)  
F. F. A. 1





KENNETH R. BALLARD

(Ken)

N. F. L. 1, 3, 4; Treasurer 4; Math Club 3; Pep Club 4; HI-Y 2, 3, 4; Beta Club 3, 4; F. T. A. 3, 4; Latin Club 1; French Club 4; Boy's State 3; State N. F. L. Tournament 3

SUZANNE LEE BALLARD

(Suzy)

Pep Club 1, 3, 4; Tri-Hi-Y 1, 2, 3; Chorus 1, 4; Sr. Representative 4; Beta Club 3; F. H. A. 1, 2, 3, 4; F. T. A. 4; Secretary of Class 1; Drama Club 4



RICHARD BANKS

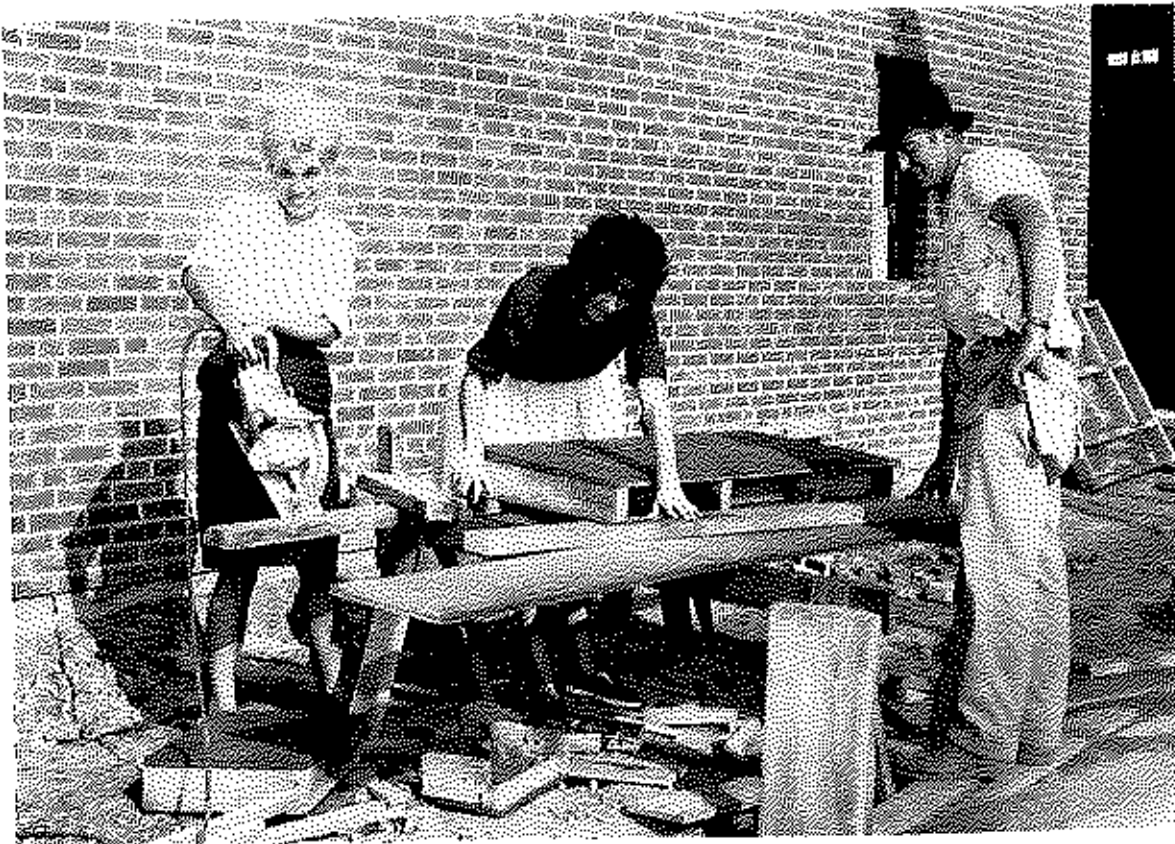
(Ricky)

F. F. A. 1, 2, 3, 4

BETTY BRUCE BARNETT

(Barney)

Tri-Hi-Y 1, 2, 3, 4; Pep Club 1, 3, 4; Smoke Signals Staff 1; Annual Staff 4; F. T. A. 3, 4; Latin Club 1; Library Club 2; Latin and Spanish Club Reporter 1; Chorus 4



With Carol and Betty's help the new school is sure to be finished!



JANICE LYNN BECKHAM

(Decky)

Tri-Hi-Y 1,2,3,4, Secretary 1; Pep Club 1, 3, 4; F. H. A. 1,2,3,4, Historian; Annual Staff 3, 4; Smoke Signal 1; Cheerleader 1,4; F. T. A. 1; Dramatics Club 3; Latin Club 1; Snow Ball Queen; Annual Dance

AULTA CAROL BERRYMAN

(Aulta)

Pep Club 1,3; Tri-Hi-Y 4; F. H. A. 2,3,4; Chorus 1



JUDITH MARIE BERRYMAN

(Judy)

Tri-Hi-Y 1,2; Pep Club 1,2; F. H. A. 4; Chorus 1

LIZABETH RUTH BERRYMAN

(Liz)

Tri-Hi-Y 1,2,3,4; Spanish Club 3, Vice-President; F. H. A. 2,3,4; F. T. A. 3,4, Treasurer 3; Pep Club 1,2,3,4; Chorus 1; F. F. A. Sweetheart 3,4; Beta Club 3,4; Dramatics 4; Homecoming Court 4

BETTY ANN BLAKEMAN

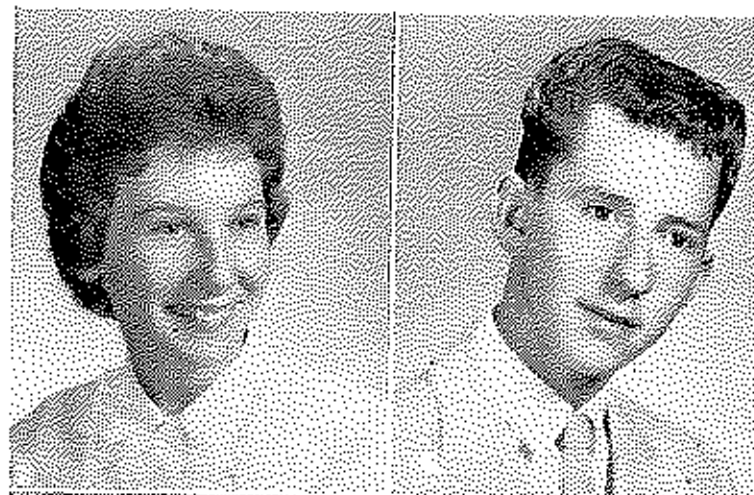
(Betty)

Tri-Hi-Y 1,2; F. T. A. 3,4; Pep Club 1,2,3,4; Beta Club 3,4; F. H. A. 4; Home Ec. Award 1

ARTHUR LEE BOONE

(Arthur)

F. F. A. 1,2,3,4



LEVI DANIEL BOONE

(Danny)

Pep Club 2,3,4; Beta Club 3,4, President 4; Hi-Y 4; Track 3,4; Football 2,3,4; Annual Staff 4, Sports Editor 4; Yearbook King; Homecoming Court 4

NORMA LOU BORDERS

(Norma)

Tri-Hi-Y 4; Pep Club 4; F. H. A. 1,2,3,4, Secretary 4



**DANNY STUEBING BRACKETT**

(Danny)

Library Club 1,2; Pep Club 1,3,4; Smoke Signals Staff 4, Sports Editor 4; Football 2,3,4; Homecoming Court; All Mid-State Conference Honorable Mention; HI-Y 3,4; F.T.A. 4; Annual Staff 3,4, Photographer 3,4

**SALLY ANN BROCK**

(Sally Bee)

Transferred from Maysville High 3; F.H.A. 1,2,3; Pep Club 2,3; Band 1,2,3; Chorus 1,2,3; B Team Cheerleader 1; Varsity Cheerleader 2,3; Transferred to Edge Water High 3; Band 3; Chorus 3; Transferred to C.C.H.S. 4; Chorus 4; Tri-HI-Y 4; Pep Club 4; F.T.A. 4; F.H.A. 4; Candidate for Homecoming Queen

**JEAN ANN BROWN**

(Jean)

Tri-HI-Y 2,3,4; F.T.A. 4; Pep Club 1,3,4

**JACK WILLARD RUCHANAN**

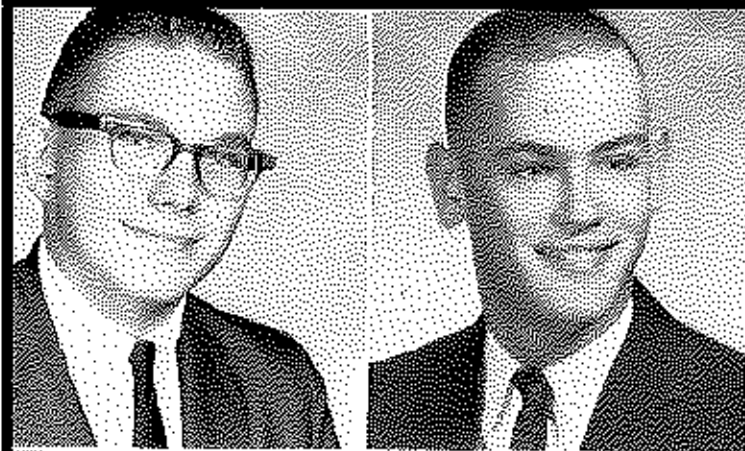
(Jackie)

Pep Club 1,3,4; Beta Club 3,4; Math Club 3; Mu Alpha Theta 3; WIKY 3,4, Program Director 3, Engineer 3,4; HI-Y 4; Smoke Signals 4, Circulation Manager; Band 1; Annual Staff 4, Photographer; National Semifinalist 4



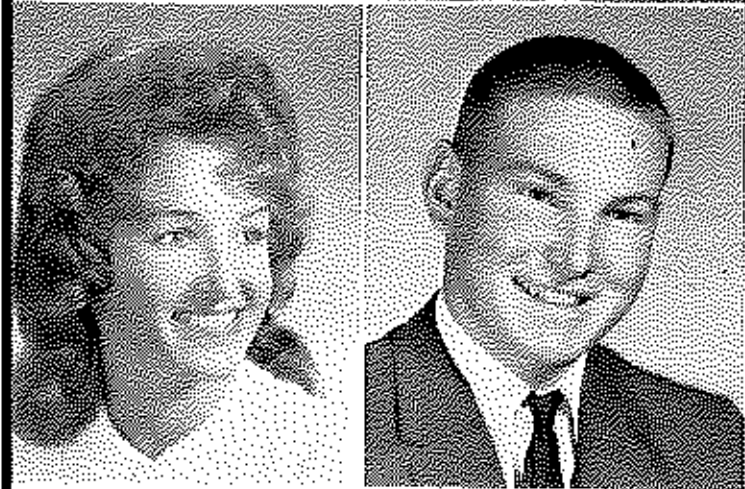
It looks as though Pat,  
Carol, Sandy and Connie  
have regressed to child-  
hood!





HEBER BURCHETT  
(Heber)  
HI-Y 1,2,3; Pep Club 1; F. T. A. 4

RICHARD CORNELL CARTER  
(Rich)  
Millersburg Military Institute 1; Jr. Varsity  
Football 1; Blackford High 3; Chess Club 3;  
Radio Club 3; Clark County 4; HI-Y 4; N. F. L. 4

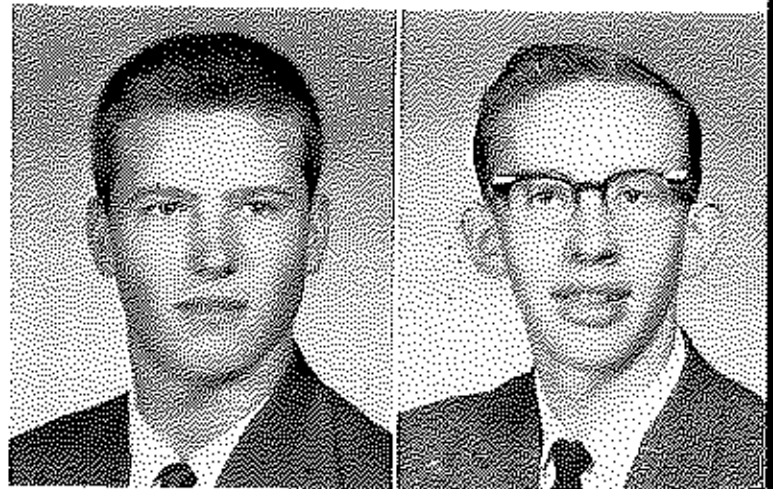


VIOLET CASSITY  
(Tiny)

THOMAS HAROLD CAUDILL  
(Tom)  
F. F. A. 4; Basketball Manager 2

ROY DAVIS GHISM  
(Glis)  
F. F. A. 1,2,3,4, Assistant Sentinel 3, Treasurer 4

GERALD CHRISMAN  
(Gerald)  
F. F. A. 1,2,3; Beta Club 3,4



SANDRA KAYE CHRISTOPHER  
(Sandy)  
Pep Club 1; Tri-HI-Y 3; F. T. A. 4; F. H. A.  
1,2,3,4; Chorus 4

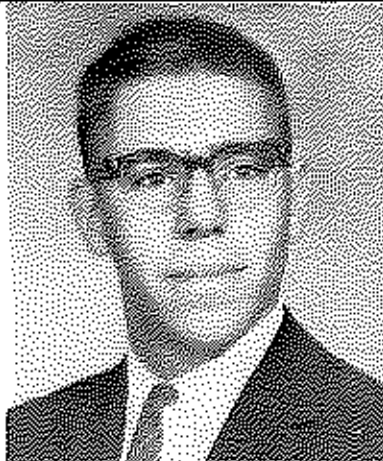
RAYMOND JACKSON CLARK  
(Shot)  
Track 4; Perfect Attendance 3



DAVID TELFORD CLAY

(Dave)

Beta Club 3,4, Vice-President 4; Latin Club 1;  
F. F. A. 3; Football 1,2,3,4, Co-Captain 3,4,  
All Mid-State Conference Team, All State  
Honorable Mention; Pep Club 2,3,4, Reporter  
3; Annual Staff 4; Class President 3; Class Reporter;  
Scholarship from National Science Foundation 3;  
Boy's State Alternate 3



RAYMOND EDWARD CLAY

(Mg-Goo)

Chorus 4

LYNN DAVID CLEM

(Chester)

Class Vice-President 1; Basketball 1,2,3; Pep  
Club 2,3,4; Hi-Y 4, Sergeant at Arms 4; Pep  
Club Manager 4



MARTHA ANN CLEM

(Martha)

Spanish Club 4



Johnny, are you and Patty  
paying attention?



PATRICIA ANN COLLINS

(Pat)

Tri-Hi-Y 1,2,3,4; F.H.A. 2,3; Pep Club 1,2;  
F.T.A. 4; Library Club 2; Annual Staff 4;  
Girl's Basketball 1,4

LUCINDA WARE CONDWRIGHT

(Cindy)

Pep Club 1,3,4; F.T.A. 3,4; Librarian 3;  
F.H.A. 1,2,3,4; Typist 1,2,3,4; Cheerleader  
1; Library Club 2; Dramatics Club 3; Chorus  
4; Tri-Hi-Y 1,2,3,4; Annual Staff 3,4



PATRICIA GAIL CREECH

(Screech)

Tri-Hi-Y 2,3,4; Beta Club 3,4; Pep Club 1,2,  
3,4; Chorus 1,2,3,4; F.T.A. 4; Annual Staff  
4; Dramatics Club 4

RACHEL LEE CROUCH

(Rachel)

F.H.A. 2,3,4; Pep Club 1

MICHAEL CUNNINGHAM

(Mike)

LORETTA DAVIS

(Lo)

Chorus 1; F.H.A. 1,2,3



JOE DENNIS, JR.

(Joe)

Versailles High School 1,2; Key Club 1,2; Cho-  
rus 1,2; Clark County 3,4; Pep Club 3,4;  
F.T.A. 3,4; N.F.I. 3,4; Beta Club 3,4;  
WIKY 3,4; Hi-Y 4; Vice-President 4

BRENDA CAROL ESTES

(Brenda)

Pep Club 1,2; F.H.A. 1,2,3,4; Annual Staff 2;  
Chorus 1,4



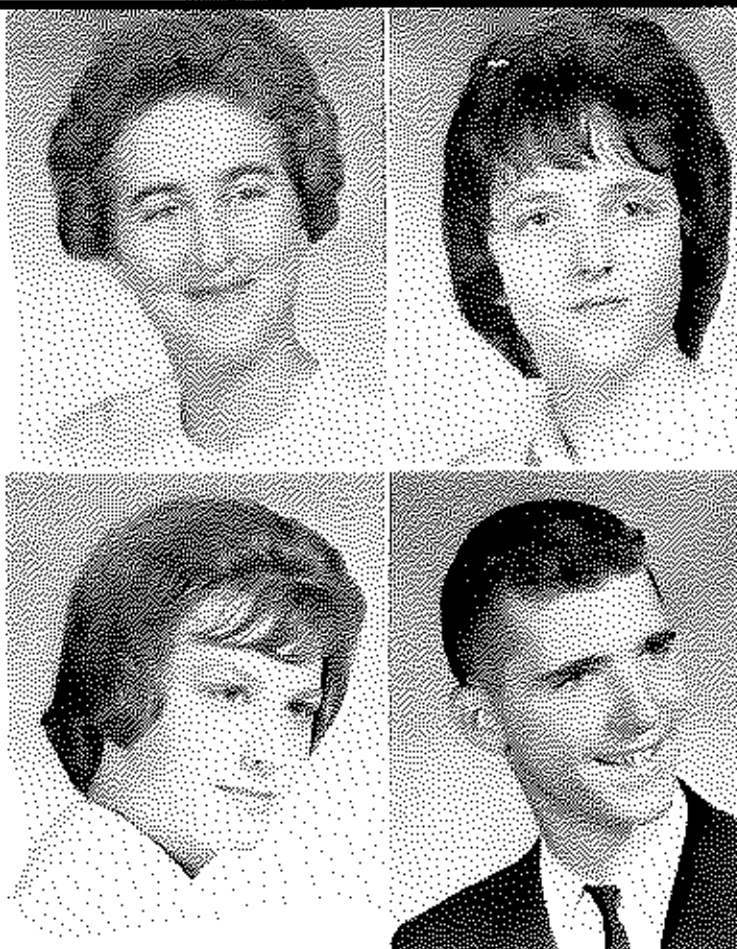


LINDA LEE ESTES  
(Linda)  
F. H. A. 1, 4; Dramatics 4

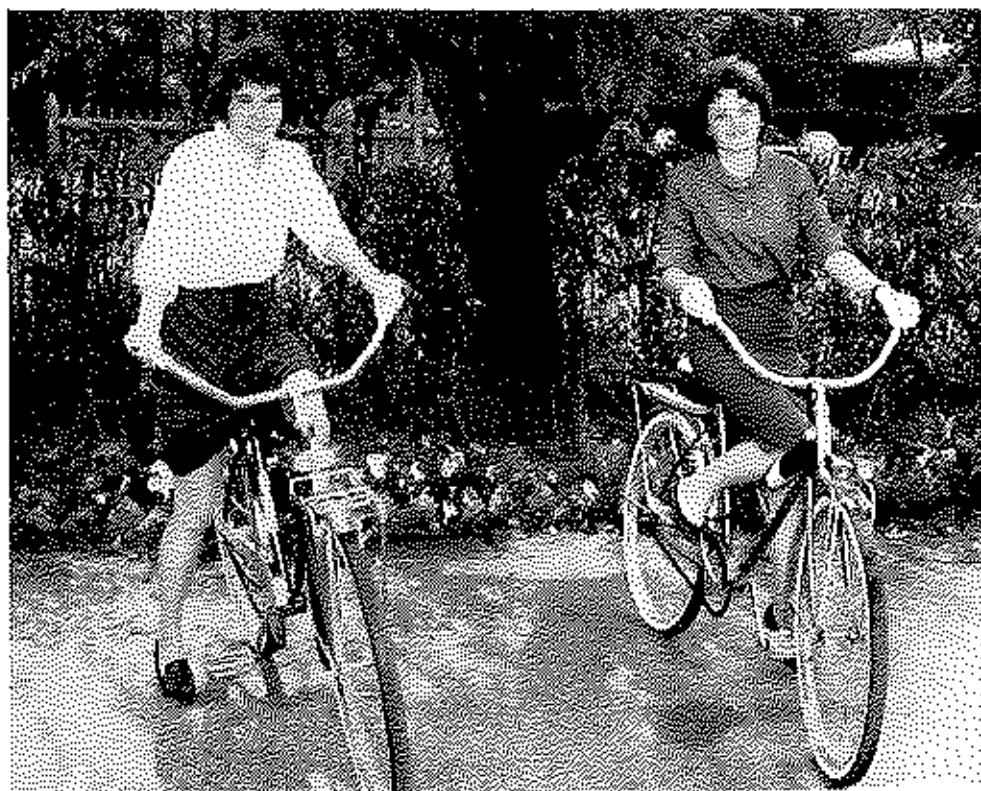
FRANCES ANN FOLLIICK  
(Frank)  
Tri-Hi-Y 1, 2, 3, 4; F. T. A. 3, 4; Pep Club 1, 3,  
4; Smoke Signals Reporter 4; KUNA 3; Annual  
Staff 4; WIKY 3, 4; N. F. L. 3

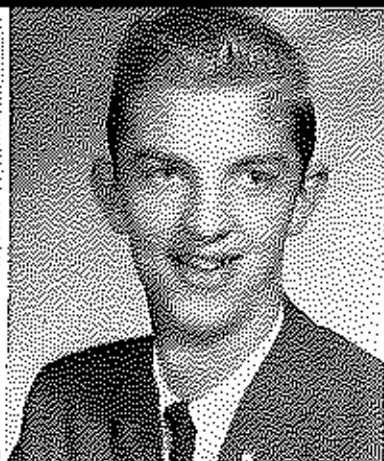
ELIZABETH FARA FOX  
(Fara)  
Tri-Hi-Y 1, 2, 3, 4; Pep Club 1, 3, 4, President  
4; Smoke Signals 2, 4, Feature Editor 4; F. H. A.  
1, 2, 3, 4, Recreation Leader 2; F. T. A. 4;  
National Thespian Society 4; Class Vice-Presi-  
dent 2; Class Treasurer 3; Cheerleader 2, 3, 4;  
Annual Staff 4; Quill & Scroll 4; KUNA 1;  
Homecoming Attendant 4

JOHN PREWITT GAINES, JR.  
(Johnny)  
F. T. A. 3, 4; Pep Club 1, 3, 4; Hi-Y 2, 4; Cho-  
rus 4



Now remember, Janice and Alice, don't go near the traffic.





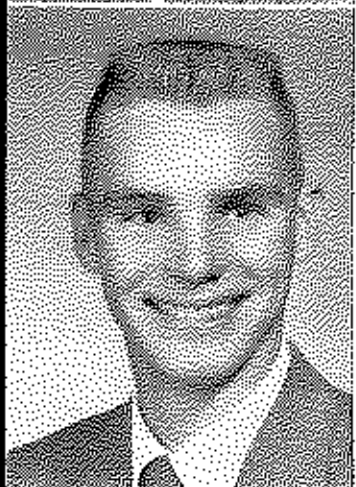
JAMES LESLIE GARRETT

(Head)

F. T. A. 4; Chorus 1, 2, 3, 4; Band 1, 2, 3, 4;  
Select Choir 4

JERRY CALVIN GAUNCE

Hi-Y 2, 3, 4; K. Y. A. 2, 3; Pep Club 1; Golf  
Team 2, 3, 4; WIKY 3, 4; Smoke Signals 4;  
N. F. L. 3, 4



KENNETH D. GAUNCE

(K. D.)

North Middletown 1, 2; F. F. A. 1, 2; Sentinel;  
Basketball 1, 3; Clark County 3, 4; F. F. A. 3, 4

PATRIA ANN GEARY

(Patria)

Tri-Hi-Y 1, 2, 3, 4, Chaplain 2, 4; Beta Club  
3, 4; Math Club 3; N. F. L. 3, 4, N. F. L. State  
Meet 3; F. T. A. 3, 4; French Club 4; Annual  
Staff 2, 3, 4, Organizations Editor 4; National  
Science Foundation Scholarship 4

JOSEPH WADELL GINTER

(J. W.)

F. F. A. 4

VIRGINIA MARGARET GLASS

(Jenny)

Pep Club 1, 2, 3; F. H. A. 1, 2, 3, 4; Annual Staff  
2; Chorus 1, 4

WALTER M. GRANT

(Jake)

Latin Club 1, President 1; Smoke Signals 1, 2,  
3, 4, Co-Editor 4; Quill & Scroll 3, 4, Presi-  
dent, Treasurer 3, 4; Basketball 1; Hi-Y 2, 3, 4,  
Chaplain 4; F. T. A. 3, 4; Pep Club 1, 3, 4; Cho-  
rus 4; Special Choir 4; Annual Staff 2; Beta  
Club 3, 4

MARIAN CAROL GRAY

(Carol)

Pep Club 1, 3, 4; Tri-Hi-Y 2, 4; F. H. A. 1, 3, 4,  
2nd Vice-President 4; F. T. A. 3, 4; Annual Staff  
3, 4; Drama Club 4; Library Club 2



SUELEN GRAVETT

(Smellum)

F. H. A. 2, 3, 4; Tri-Hi-Y 3, 4; Pep Club 2, 3, 4;  
Chorus 2, 4; Dramatics 3, 4; Class Reporter;  
F. T. A. 4; National Thesplan Society 4

CARL GRAVETT

(Carl)

Band 1; Pep Club 1; Beta Club 3; F. F. A. 1, 2,  
3, 4, 2nd Vice-President 4, State F. F. A. live-  
stock Judging 2, Soil Conservation Essay 2,  
State F. F. A. Leadership Training Center 4

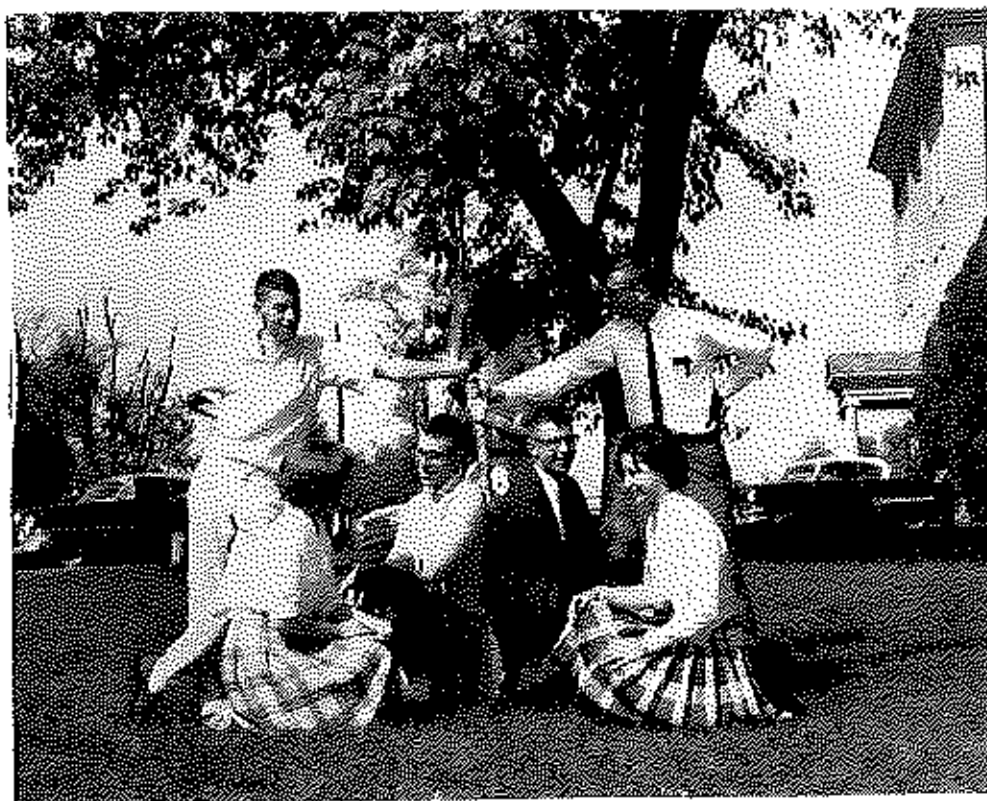
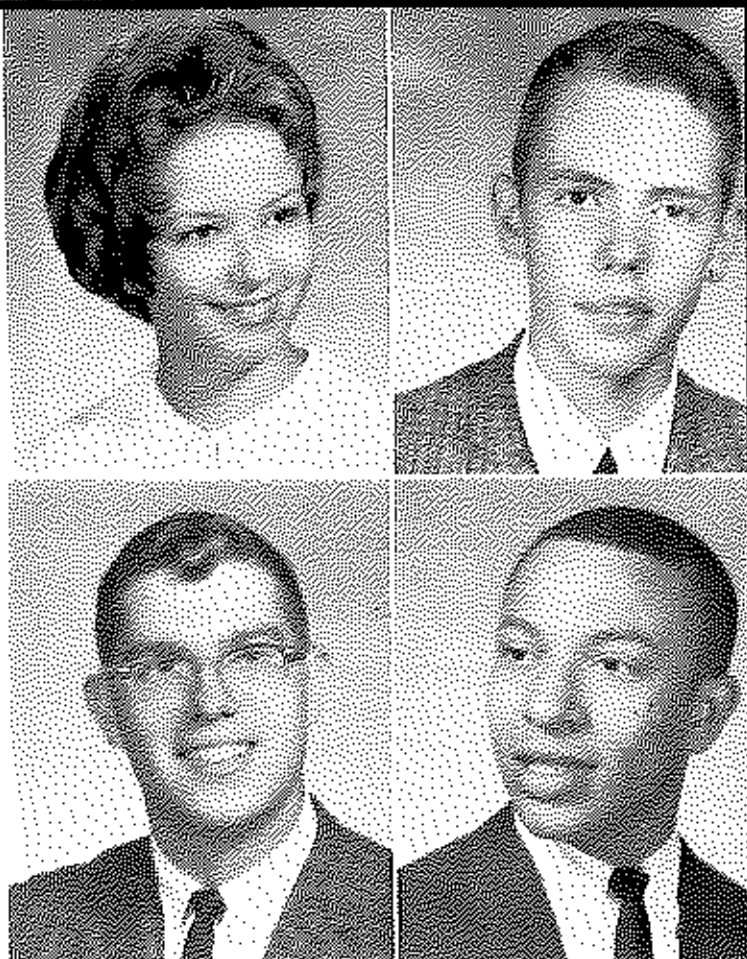
KENNETH RUSSELL HAMMONS

(Big Ken)

Pep Club 1, 2; F. T. A. 4; Chorus 4

JAMES HAMPTON

(Jim)



Ah! Just to relax in the shade, and talk over old times.

JUDY HOLLON

(Conoua)

Pep Club 1; Tri-Hi-Y 1; F. H. A. 1, 2, 3, 4

LEWIS GUNNAR HOLMBERG

(Hamburger)

F. F. A. 1, 2, Assistant Secretary 2; Hi-Y 3, 4;

F. T. A. 4; Pep Club 4

JOHN HOUGHTON

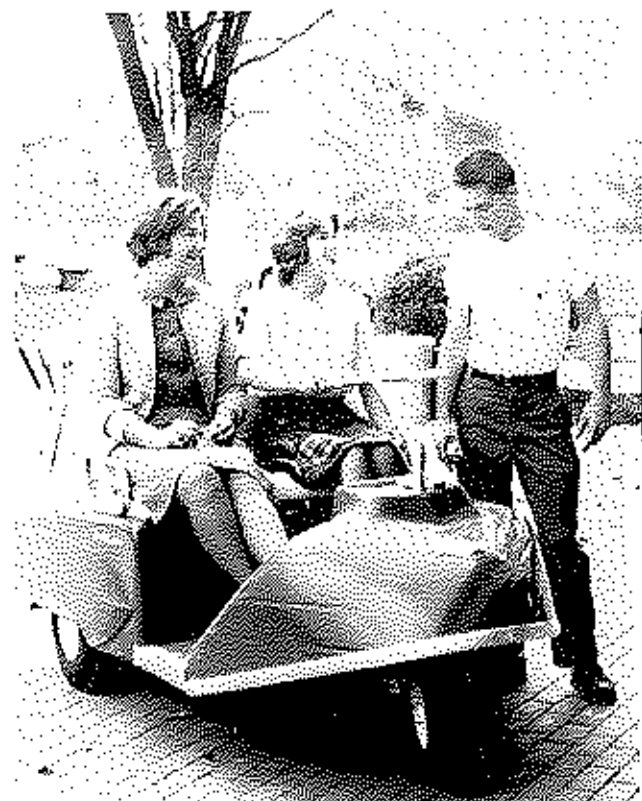
(Hokey)

Pep Club 2, 3, 4, Manager of Pep Club 1, 4

ANNETTE LOUISE HOUTZ

(Anette)

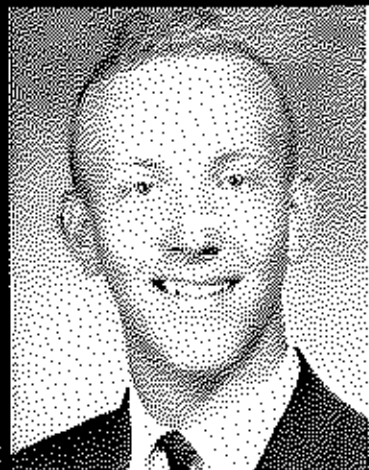
Dramatics Club 3



Richard, for heavens sake don't you dare turn Jane and Terry loose in that thing. You know how Jane drives.



A run on telephone conversations? We hope it's not private, Cameron.



ROBERT ALLEN HANEY  
(Bobby)

JOYCE ANN HARRIS  
(Joy)

Pep Club 1,3,4; F. T. A. 3,4; Tri-Hi-Y 4;  
F. H. A. 4



LOIS ANN HARRIS  
(Lois)

F. H. A. 1,2,3,4, Recreational Leader 2, Secre-  
tary 3, President 4; Tri-Hi-Y 1,2,4; Pep Club  
2,3,4; Beta Club 3,4; F. T. A. 3; Latin Club 1

ROBERT FRANKLIN HART, JR.  
(Bob)

Basketball 1; Football 1; Baseball Manager 2;  
Hi-Y 2; Spanish Club 3

BETTY JOYCE HATTON  
(Betty)

F. H. A. 1,2; Pep Club 1

DONALD CAMERON HAYS  
(Cam)

Pep Club 2,3; F. T. A. 3,4; Golf 2,3,4

HOLLACE ELLEN HENKEL  
(Holly)

Lutheran High 1,2; Girl's Athletic Association  
1,2; Council Band 1; Orchestra 2; Library As-  
sistant 2; Science Fair 1, Red Ribbon; Clark  
County 2,3,4; Pep Club 3,4; Tri-Hi-Y 3,4;  
F. T. A. 3,4; Band 2; Chorus 3,4, President 4;  
National Thespian Society 4; Smoke Signals  
Staff 3,4, Cartoonist 4; Quill & Scroll 4, Secre-  
tary-Treasurer; Annual Staff 3,4, Co-Editor,  
Art Editor 3; Beta Club 3,4, Reporter 4; N. F. L. 4

IVAN HISLE  
(Ivan)





JAMES REESE HOWARD

(James)

F, F, A, 2



LEILA JANE HUFF

(Jane)

Pep Club 1, 3, 4; F. H. A. 1, 3, 4; Reporter 4;  
F. T. A. 3, 4; Annual Staff 3, 4; Dramatics Club  
4, President 4; Tri-Hi-Y 2, 4; F. H. A. Junior  
and Chapter Degrees 1, 3



SHARON KAYE HUKLE

(Sharon)

Pep Club 3; F. H. A. 1, 3, 4; Library 1, 2



ALICE ANN JACKSON

(Alice)

F. H. A. 1, 2, 3, 4, Recreation Leader 4, Junior  
and Chapter Degrees; Tri-Hi-Y 1, 2, 3, 4; Pep  
Club 1, 2, 3, 4; Beta Club 3, 4; F. T. A. 4

KENNETH GENE JOHNSON

(Duggs)

Hi-Y 4; F. T. A. 4

RONALD ALLEN JOHNSON

(Ronnie)

Typing Award 1



L. B. HOOD

(Hoot)

Basketball 1, 2, 3, 4; Baseball 3, 4

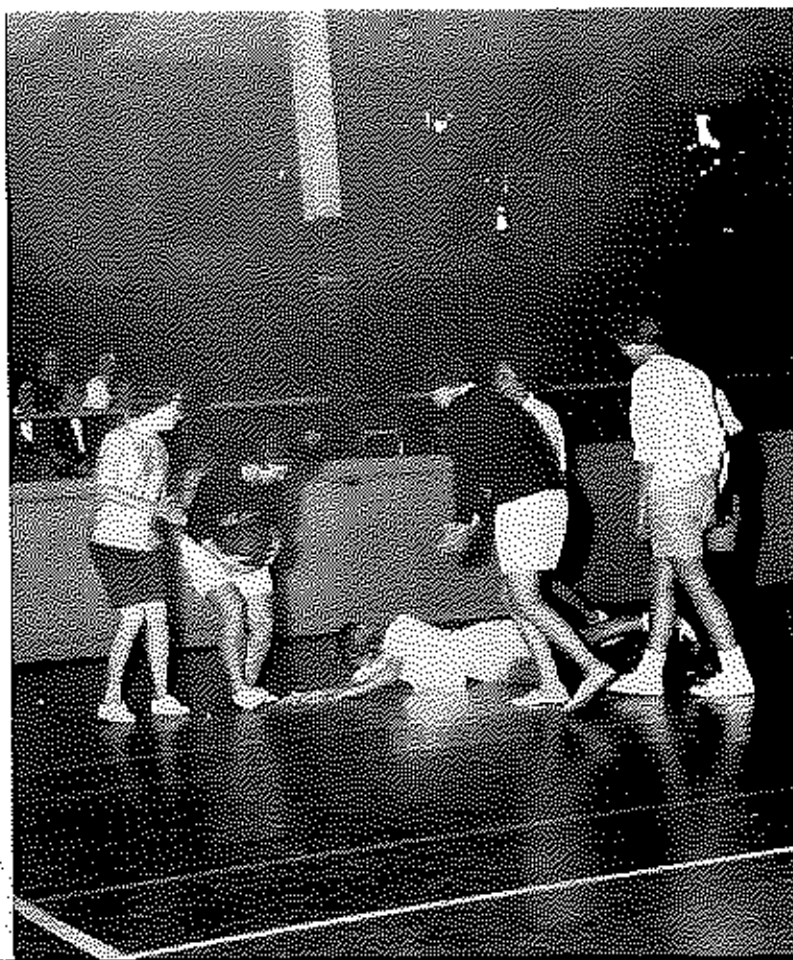


GERALD THOMAS KELLY  
(Jerry)  
Hi-Y 2, 3; Pep Club 1, 3, 4; Track 2, 3, 4; Foot-  
ball 2, Football Manager 3, 4

LEE PENDLETON KERR  
(Lee)  
Dramatics Club 4; Basketball Manager 1

JOE BUSH KING  
(J. B.)

JEAN LAVERTY  
(Jean)



Get up off the floor, Lois,  
and play ball.



LILLIE MAE KIRK

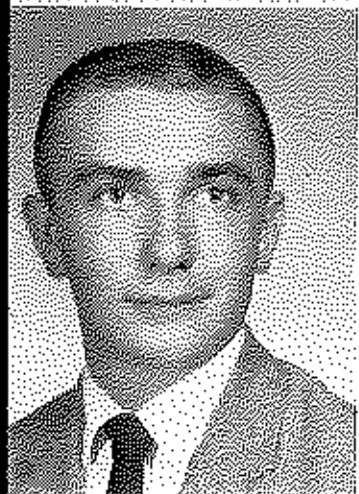
(Red)

F. H. A. 3, 4

JAMES ALAN LANDRUM

(Jimmy)

Pep Club 1, 2, 3, 4; Beta Club 3, 4; Citizenship Award 1; N. F. L. 3, 4; State Tournament 3; Hi-Y 3, 4; Eastern Speech Festival 1, 3; French Club 4; Drama Club 3, 4; Spanish Club 4, Vice-President 4; F. T. A. 3, 4; Basketball 2, 3



DAVID HUNTER LEE

(Shike)

F. F. A. 1, 2, 3, 4, President 4; Beta Club 3, 4; Pep Club 4

WILLIAM WYMON LEATH

(Brother)

Pep Club 1, 3, 4; Hi-Y 4; Beta Club 3; Band 1; French Club 4; Class President 4

LEE MAR LEWIS

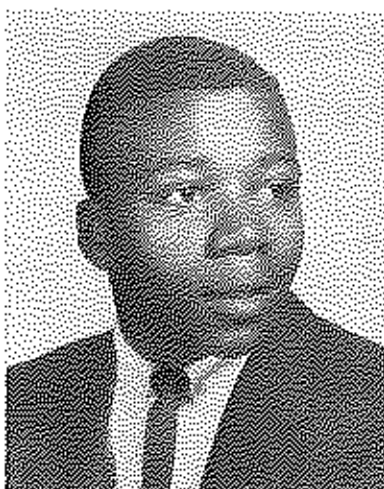
(The Wheel)

Basketball 3; Baseball 1, 3, 4

SANDRA LOUISE LINVILLE

(Sandy)

Tri-Hi-Y 1, 2, 3, 4, Treasurer 4; N. F. L. 1, 2, 3, 4, Reporter 4; Latin Club 1, Treasurer 1; Girl's Basketball 1; Pep Club 1, 3, 4; French Club 4; Smoke Signals 3, 4, Staff Writer; Eastern Speech Festival 1, 3, 4; Homecoming Queen Candidate 4; Attendance Award 1; Typing Award 2; K. Y. A. 1, 2, 3; Chorus 1



JAMES PREWITT LISLE

(Jilly)

Hi-Y 2, 3, President 2, Vice-President 3; Pep Club 1, 3, 4; F. F. A. 1, 2; Beta Club 3, 4

LOWELL DOUGLAS MEANS

(Goose)

Hi-Y 4





JAMES MORGAN McCORD

(Jimmy)

F. F. A. 1

JOE BROWN McCORD

(Chadsworth)

F. F. A. 1, 2, 4; Hi-Y 3, 4; F. T. A. 4; Pep Club 1; Baseball 4

JANE LEE McCOMICK

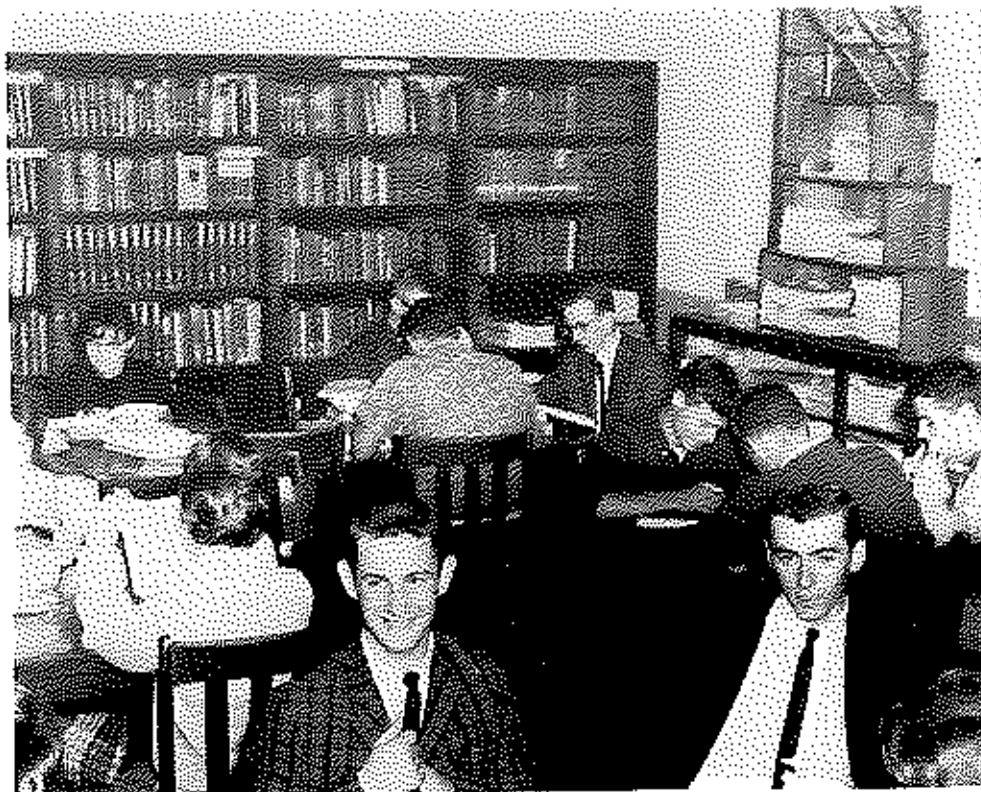
(Cookie)

Tri-Hi-Y 1, 2, 3, 4; Pep Club 1, 3, 4; F. H. A. 1, 3, 4, Junior Degree 1; Beta Club 3, 4; Smoke Signals Staff, Advertising Manager 1, Staff Writer 4; Math Club 3; Mu Alpha Theta 3; Latin Club, Secretary 1; French Club, Vice-President 4; F. T. A.: Homecoming Candidate 4; Annual Staff 4, Activities Editor 4; K. Y. A. 1, 2, 3; KUNA

PHYLLIS LOUISE MONROE

(Phyl)

Latin Club 1; Junior Classical League 1; Pep Club 1, 2, 3, 4; Tri-Hi-Y 2, 3, 4; F. T. A. 3, 4; N. F. L. 3, 4; Secretary of N. F. L. 4; N. F. L. State Convention 3; Eastern Speech Festival 3; Spanish Club 4, Treasurer 4; Beta Club 3, 4; Annual Staff 4, Business Editor 4



Two great Biltys  
hard at work on  
their term papers.



CAROLYN LAVERN MOORE

(Carol)

Pep Club 1; F. H. A. 2, 3, 4; Spanish Club 4

CHERELYN GLO MOORE

(Sherry)

Latin Club 1; Tri-Hi-Y 1, 2, 3, 4; Girl's Basketball 1; Pep Club 1, 3, 4; F. T. A. 3, 4; Smoke Signals 3, 4; Fashion and Society Editor 4; Typing Award 3; Attendance Award 1



MARGARET LOUISE MOORE

(Margaret)

Tri-Hi-Y 2; Pep Club 1; F. H. A. 2, 3, 4; Chorus 2, 4

WANDA MARILYN MOORE

(Wanda)

F. H. A. 1, 2, 3, 4; Junior Degree; Tri-Hi-Y 2, 3, 4; Pep Club 1, 3, 4; Chorus 1, 2; F. T. A. 4; N. F. L. 4; Annual Staff 4; Smoke Signals 4; Dramatics 4

EUGENE WARD MORTON

(Coose)

TERRIE ANNE MOUNTZ

(Mousie)

Pep Club 1, 2, 4; Tri-Hi-Y 1, 2, 3, 4; Math Club 3; Chorus Accompanist 1, 2; Smoke Signals 4; Staff Writer and Production 4; F. T. A. 3, 4; French Club 3, 4; Reporter 4; T. A. F. H. O. 1, 4; Reporter 4; Typing Award 3; Attendance Award 1



LINDA LOU MOYERS

(Poke)

Pep Club 1; F. H. A. 2, 3, 4; Chorus 4; Tri-Hi-Y 4; Dramatics 4; F. T. A. 4; Annual Staff 2; T. A. F. H. O. 3, 4

MARY CATHERINE NEAL

(Mary)

F. H. A. 1, 4; Pep Club 1, 2; Y-Teens 1; Chorus 1, 4



PHILIP COLLINS NORTON

(Phil)

Pep Club 1, 2, 3, 4; Hi-Y, Secretary 4; F. T. A.  
3, 4; Beta Club 3, 4; Basketball 2; F. H. A. Sweet-  
heart 2



JERRY WAYNE OWEN

(Jer)

Chorus 4

LINDA PACE

(Linda)

Beta Club 3, 4; Pep Club 1



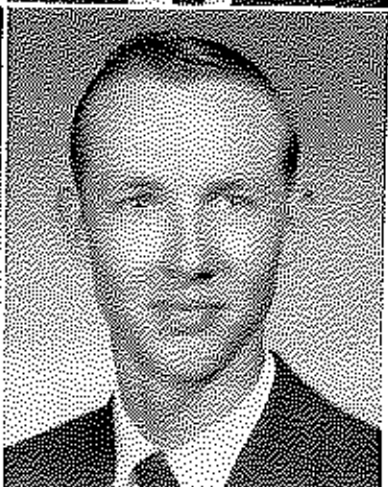
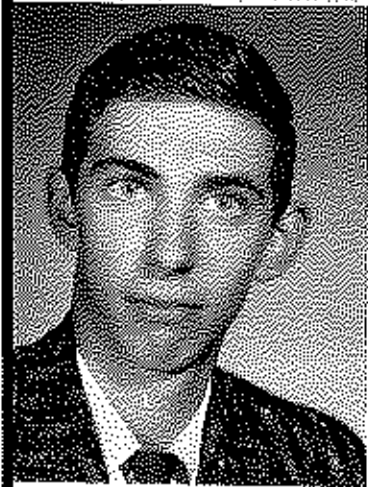
MARY MAE PACE

(Mae)

Chorus 4

Do you boys really need the credit of this class to graduate?





MISCHELLE PAGE

(Schelle)

Tri-Hi-Y 1,2,3,4, President 2, Vice-President 3; President of Class 1; Secretary of Class 3; F. T. A. 3,4, Vice-President 3; Pep Club 2,3,4, Vice-President 4; Beta Club 3,4; Varsity Cheerleader 3,4; B Team Cheerleader 1; Quill and Scroll 3,4, Secretary 3; Smoke Signals, Feature Editor 1, Society Editor 2, Assistant Editor 3; Youth Assembly 2,3,4; Press Representative; Latin Club 1, Secretary; Spanish Club 3, Secretary; French Club 4; Homecoming Queen Candidate 4; Girl's Basketball 1,4

GARY WAYNE PALMER

(Gary)

Pep Club 1; F. F. A. , Reporter 1,2,3, Vice-President 4; Federation Sentinel 4; Basketball 1; F. F. A. State Convention 4

CHARLES PARRISH

(Chicken)

F. F. A. 3

JOHN GOFF PARISH

(John)

F. F. A. 2,3,4

HENRY GRADY PARRISH III

(Hammerin' Hank)

Paper Staff - Smoke Signals 4; Pep Club 1,2,3,4; Hi-Y 2,3,4; Beta Club 3,4; Secretary-Treasurer of Freshman Class; Math Club 3; Latin Club 1; Chorus, Vice-President; F. T. A. 3,4; Basketball 1,2,3,4; Baseball 1,3,4; Golf 2

PENNEYE ANNE PEMBER

(Penneye)

Tri-Hi-Y 1,2,3,4; F. T. A. 3,4; Pep Club 1,2,3; Quill and Scroll 4; Smoke Signals 3,4, Production Manager 4; Secretary-Treasurer of Class 2; K. Y. A. 3; Spanish Club 3, Treasurer 3; Cheerleader 2,3,4; Homecoming Attendant 4

WILLIAM THOMAS PETERS

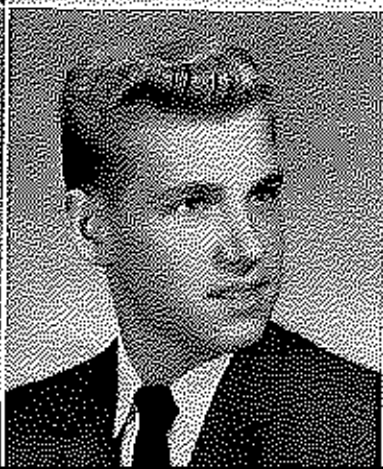
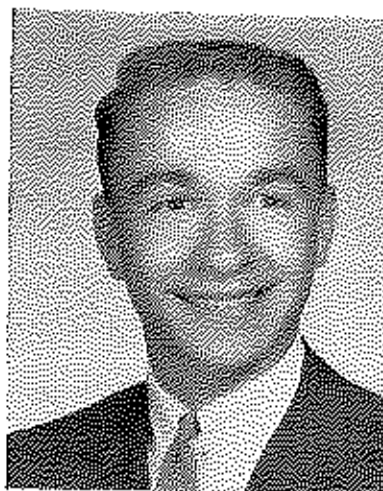
(Billy)

Hi-Y 2,3,4; Pep Club 1,2,3,4; Class Reporter 1; K. Y. A. 2,3,4

JACK MATHEW PETERSEN

(Matt)

Macon High School, Macon, Illinois 1,2; F. F. A. 1; Baseball 2; Chorus 4



DAVID COLEMAN PEYTON  
(David)

N, F, L. 3, 4. Vice-President 4, State N, F, L. Convention 3; Basketball 1; Latin Club 1; Pep Club 2, 3, 4; Hi-Y 2, 3, 4, Secretary-Treasurer 3; K, Y, A. 2; Annual Staff 2, 3, 4, Business Manager 2. Co-Editor 3, Editor-in-Chief 4; Beta Club 3, 4; Spanish Club 4, President 4; National Science Foundation Scholarship 3



TERRY LEE POTTS  
(Terry)  
Football 1; Basketball 1

SUSAN ELAINE PRATER  
(Susie)

Pep Club 1, 2, 3, 4; Tri-Hi-Y 4; Chorus 4



When Kenny  
calls Diane, he  
knows how to  
save a dime.



GEORGE W. QUISENBERRY

(George)

Pep Club 3,4; F. F. A. 1,2,3,4, Secretary 3,4; Beta Club 3,4; Basketball 1,2,3,4; Vice-President of Class 1; President of Class 2; Snow Ball King; Annual Dance

RUTHIE B. QUISENBERRY

(Hedy)

Tri-Hi-Y 1,2,3,4; F. H. A. 1,2,3,4, Recreation leader 4, Junior Chapter Degrees; Pep Club 1,3; Drama Club 3,4; National Thesplan Society 4, President 4; F. T. A. 4; Assistant Annual Staff 4



GERALDINE RALSTON

(Jerrle)

F. H. A. 1,2,3,4; Pep Club 1,2,3; Chorus 1,3,4; Annual Staff 2

DAVID EUGENE RANEY

(Dave)

Pep Club 1; F. T. A. 4

JUDY GALE RICE

(Judy)

Tri-Hi-Y 2,4; Chorus 4

CONNIE CHRISTINE ROBERTS

(Convict)

Latin Club 1; Student Council 1; N. F. L. 1,2,3,4, President 4; French Club 4, President 4; National Thesplan Society 4, Treasurer 4; Drama Club 4, Vice-President 4; F. T. A. 1,2,3,4; Pep Club 1,2,3,4; Math Club 3; Mu Alpha Theta 3; Paper Staff 1,2; Annual Staff 4, Faculty Editor 4; K. Y. A. 1,3,4; KUNA 1; 1963 Cardinal Queen



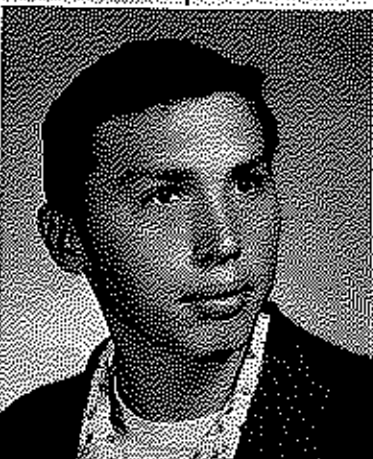
RICHARD PETERSON

(Pete)

Stephen Decatur High School, Decatur, Illinois; Basketball Manager 2; Ticket-Ticket Club 1,2; Clark County High School 3

MELVIN ROWLAND

(Melvin)



JUDY ANN RUPARD

(Judy)

Pep Club 1; Tri-Hi-Y 1, 2, 3; F. H. A. 2, 3, 4;  
Chorus 4; F. T. A. 3, 4; Annual Staff 2; Drama  
Club 4

JAMES T. SCHANDING

(James)

Hi-Y 4; Basketball 1; F. F. A. 1



CAROLYN SUE SCOTT

(Susie)

Boone County High School 1, 2; Pep Club 1, 2;  
Tri-Hi-Y 2; Clark County High School 3, 4;  
Beta Club 3

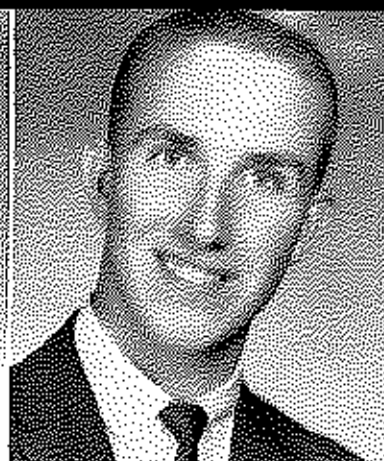
RAVERNE ELOISE SCOTT

(Bernie)

Henry Clay High School 2; Band 2, 3; Latin  
Club 2, 3; International Relations Club 3; Clark  
County High School 4; Band 4; Tri-Hi-Y 4

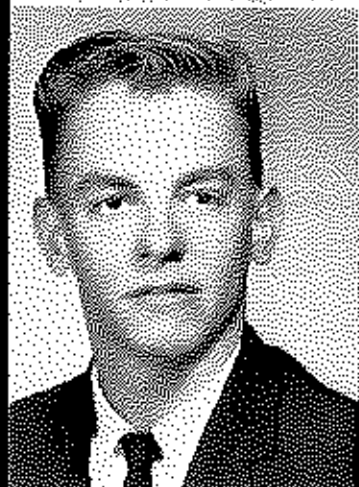


Hello, down  
there . . .  
Clark, Ken,  
Carol, Billy,  
Toby, Gary,  
and Bill.



GENEVA GAY SHARP  
(Geneva)  
Pep Club 1; F. H. A. 1, 3, 4; Chorus 4

FAIRLEY SHEPFIELD  
(Fairley)  
Basketball 2



MICHEAL LEE SILBAUGH  
(Mike)  
Annual Staff 3, 4; Art Prize 3

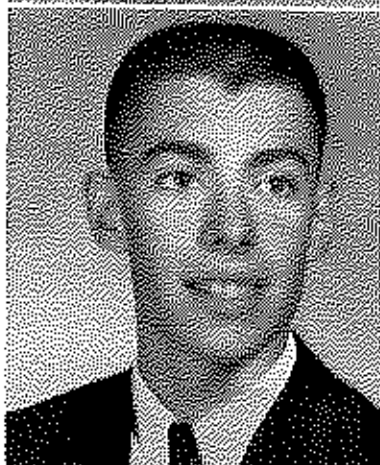
PATRICIA FAYE SNAPP  
(Snatz)  
Pep Club 1, 2, 3, 4; Tri-Hi-Y 1, 2, 3, 4; F. H. A. 1, 2, 3, 4, Reporter 3, Junior and Chapter Degrees; F. T. A. 4; F. F. A. Sweetheart 3; Class Vice-President 3; Varsity Cheerleader 3, 4; Annual Staff 4; KUNA 1; Homecoming Attendant 4

REBECCA ANN SNAPP  
(Becky)  
Pep Club 1; Chorus 1, 4; F. H. A. 4

LELA FAYE SORRELL  
(Lee)  
Honor Club 1, 2; Beta Club 4; F. H. A. 3, 4; Pep Club 4

GARY RICHARD SPENCER  
(Spence)  
Pep Club 1, 2; Hi-Y 2, 3, 4; K. Y. A. 3, 4; N. F. I. 3, 4; Class Vice-President 4; Band 3, 4, President 4, Drum Major 4; Annual Staff 4; F. T. A. 3, 4; Chorus 3, 4

WILLIAM ROGERS SPHAR  
(Squire)  
Latin Club 1; Pep Club 1; Hi-Y 2, 3, 4, Vice-President 2; Paper Staff 3; Annual Staff Photographer 3, 4; Beta Club 3, 4; French Club 4





VIRGINIA LEE SPICER

(Jenny)  
Chorus 4



CAROL ANN STANCOFF

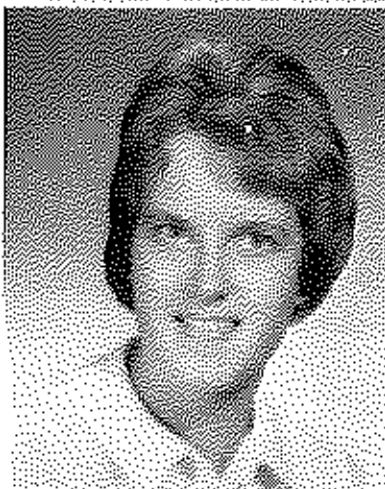
(Sis)

Pep Club 1; Trl-Hi-Y 3,4; F, H, A, 1,2,3,4,  
Junior Degree; Drama Club 3,4, Secretary 4;  
National Thespians Society 4; Chorus 4; Annual  
Staff 2

CAROLYN ANN STATON

(Artbuckle)

Trl-Hi-Y 1,2,3,4; Spanish Club 3, Reporter 3;  
Class President; Cheerleader 1; Pep Club 1,4;  
F, T, A, 4, Reporter 4; F, H, A, 3; Annual Staff  
4; May Day Queen Attendant 1; Drama Club 4;  
Homecoming Queen 4



BERTHA ODESSA STEVENSON

(Steve)

Pep Club 1; F, H, A, 1,2,3,4; Trl-Hi-Y 1

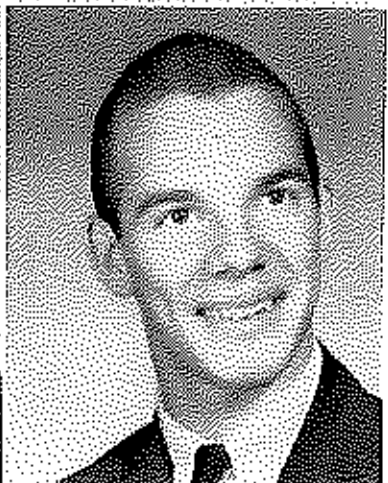
Mr. Temple, are you sure that you are getting your point over to the class?





RALPH STICKROD  
(Ralph)

GRACE ELAINE STIPP  
(Skippy)  
Library Club 1,2; F. H. A. 3,4; Chorus 4



MAYNARD KEITH TAPP  
(Speedy)  
F. F. A. 1,2

MICHAEL DEAN THOMAS  
(Young Mike)  
Hi-Y Club 2, Chaplain; Pep Club 1; Football 1

JACQUETTA MAE TIPTON  
(Jackey)

Pep Club 1; F. H. A. 1,2,3,4, Parliamentarian  
3, Junior and Chapter Degrees; Library Club  
1; Chorus 1,4

RONNIE GENE TOLER  
(Toler)

Owsley County High, Booneville 1,2; Basket-  
ball 1; F. F. A. 1; Clark County High 3,4; Beta  
Club 3,4

JEANIE YVONNE TREW  
(Sis)

F. H. A. 1,2,3,4, Junior Chapter Degree; Pep  
Club 1; Chorus 4; Tri-Hi-Y 1,2,3,4; Drama  
3,4

KATHLEEN TRUSTY  
(Kitten)

Pep Club 1,2; F. H. A. 1,2,4; Tri-Hi-Y 4;  
Library Club 1



CAROL ANN VARLIE

(Carol)

Pep Club 1,2,4; F. H. A. 1,2,3,4; Tri-Hi-Y  
1,2,3,4; KUNA 1; F. T. A. 4; Annual Staff 4;  
Class Secretary 4; Candidate for Homecoming  
Queen 4; Typing Award 3; Girl's Basketball 4



RUFUS MARIE VARNER

(Rufus)

F. H. A. 2,3,4; Vice-President 4; Tri-Hi-Y  
1,2,3,4; Pep Club 1,2,3; F. T. A. 4; Assistant  
to Librarian 2,3,4



KARSTEN LEE WEAVER

(Kar)

F. H. A. 2,3,4; Tri-Hi-Y 4; F. T. A. 4; Pep  
Club 4; Chorus 4; Junior Degree

PAMELA ANNE WHEELER

(Pam)

Pep Club 1,3,4; Tri-Hi-Y 1,2,3,4; President  
4; Newspaper Staff 3,4; News Editor; Beta Club  
3,4; Quill and Scroll 4



Now, students, all  
you need is just  
that certain touch  
to make it look  
just right.



DIANNE WILLIAMS

(Dianne)

Pep Club 1,3,4; French Club 4; Tri-Hi-Y 1,2,3,4; Beta Club 3,4; Math Club 3; Annual Staff 2,3,4; Delegate to K. Y. A. 3; Delegate to Girl's State

PATRICIA JANE WITT

KUNA 1; K. Y. A. 1; Tri-Hi-Y 1,2,3,4; F. H. A. 1,2,3,4; Pep Club 1,2,3,4, Manager 4; N. F. L. 3,4; F. T. A. 3,4, Vice-President 4; Annual Staff 2,3, Art Editor 2,3



JERRY WOOD

(Woodpecker)

Pep Club 1; Football 1; Basketball 1; Hi-Y 3,4; Perfect Attendance 1,2

ROY CALVIN WOOD

(Spud)

Basketball 1

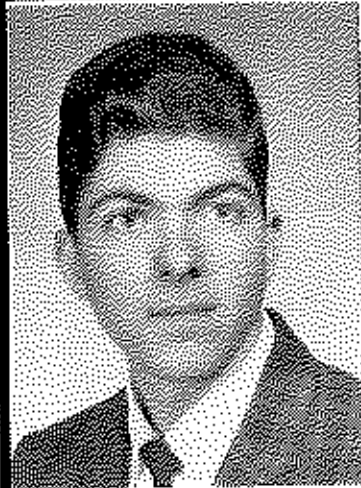
What's the matter, Holly?  
Pat is just showing her  
talents. What are you  
laughing about, Jeanne?





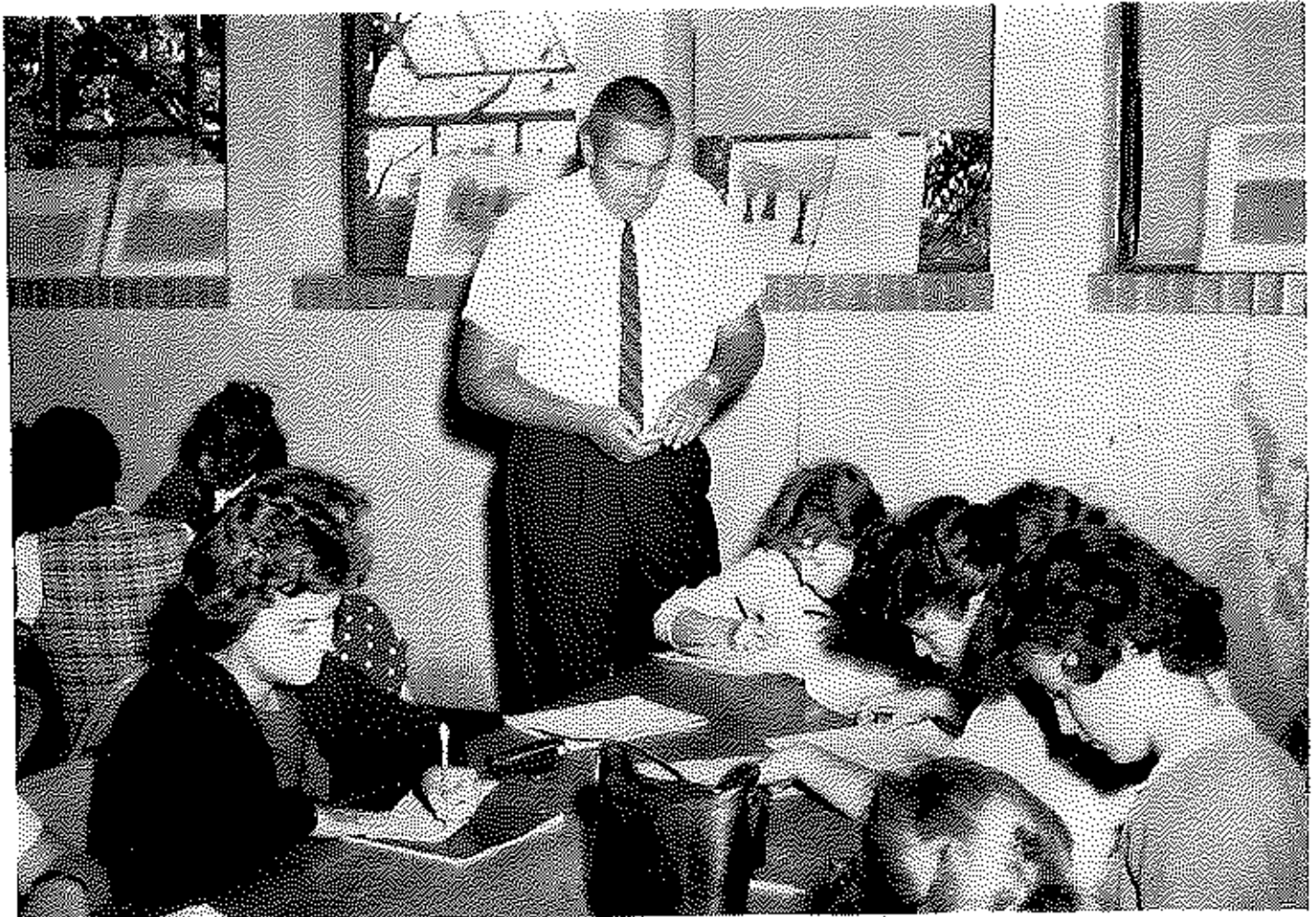
RONALD SMITH  
(Ronnie)

TOBY WOLCOTT  
(Toby)



JAMES LOWERY WOOSLEY  
(Jim)

Mr. Adams always trusts his students when they are taking tests?



# JUNIORS

Abbott, Mary  
Abbott, Norma  
Abshear, Robert  
Ackerman, Jackie



Adams, Mary Ann  
Aldridge, Virginia  
Allen, Samuel  
Anderson, Gayle



Averitt, Mary Lou  
Baber, Sue  
Baber, Ina Jean  
Baber, William



Bailey, Sharon  
Banks, Freida  
Banks, Porter  
Beall, Thomas



Bedford, Bonnie  
Blakemore, Nancy  
Boler, Ester  
Bowlin, George



# CLASS OF '64



Bowling, Ralph  
 Brady, Dorothy  
 Brassfield, John  
 Bratton, Mary Lou



Brookshire, James  
 Brookshire, Ronald  
 Brown, Sharon  
 Buton, Bernice



Burch, Marjorie  
 Burchett, Sharon  
 Burchett, Zeldra  
 Burnam, Judith



Burns, Alta  
 Bush, Floyd  
 Carrington, Marilyn  
 Caywood, Curt



Chamberlain, Kay  
 Chamberlain, Vicki  
 Chancy, Phyllis  
 Charles, Geneva

# JUNIORS

Charles, Charlene  
Chism, Judy  
Christopher, Brenda  
Cole, John Mac



Conkwright, Leonard  
Conkwright, Peggy  
Conner, Lucy  
Cook, Suzanne



Crace, James Al  
Crowe, Margaret  
Culton, Ann  
Cunningham, Marguerite



Curtis, Kitty  
Daniel, Phil  
Daugherty, Jerry  
Davis, Doris



Depue, Georgetta  
DeVary, David  
Dykes, Shirley  
Eades, Mildred





# CLASS OF '64



Eaton, Wilena  
Elkin, Tommy  
Emanuel, Barbara  
Epperson, Betty



Epperson, Susan  
Estes, Charles  
Estes, Harriet  
Estes, Sandra



Estes, Wayne  
Evans, Tommy  
Fallen, David  
Fallen, Kelly



Paulconer, James  
Faulk, Walter  
Faulkner, Sue  
Ferrell, Mary Ella



Fisher, Tommy  
Fitzwater, Shiela  
Flinchum, Bonnie  
Fraysur, Lois Ann

# JUNIORS

Frost, Joe  
Gallaher, David  
Gaunce, Carleen  
Gay, Anthony



Gay, Earl  
Gentry, Gary  
Gentry, Susan  
Gentry, Virginia



Gluter, Linda  
Hagan, Nancy Clair  
Haggard, Jerry  
Hall, Gary



Hall, Phyllis  
Hann, Van  
Hammons, Karen  
Hampton, Linda



Hampton, Rosalind  
Harney, Pam  
Hatton, Danny  
Hedger, Phyllis



# CLASS OF '64



Henry, Clyde  
Hisle, Patsy  
Hodgkin, Clara Jane  
Holland, Nellie



Holton, Gary  
Hopper, Mavis  
Houghton, Ester  
Hounshell, Carol



Howard, Eddie  
Hukle, Jean  
Hull, Donnie  
Hunt, Diane



Hunter, Diane  
Ingram, Donald  
Issacs, Gary  
Jackson, Eddie



Jackson, Raymond  
Jarman, Sandy  
Johnson, Carol  
Johnson, Donna

# JUNIORS

Johnson, Freddie  
Johnson, Ronald  
Johnson, Sandy  
Johnson, Sharon



Johnston, Wayne  
Johnston, Emma Lou  
Johnston, Richard  
Jordan, Linda



Keene, Carolyn  
Kindred, Donna  
King, Brenda  
King, Leslie



Kirk, Elwood  
Lane, Elizabeth  
Lewis, Marilyn  
Maines, Allen



Marsh, Eleanor  
Martin, Connie  
Martin, Wayne  
Masters, Kenneth Ray



# CLASS OF '64



Miller, Phyllis  
 Moore, Earl Michael  
 Moore, Kenneth Ray  
 Morton, Marvin



Myers, Phillip  
 McIntosh, Alberta  
 McNeil, Nancy  
 Newby, John



Newell, Dorothy  
 Nixon, Kathleen  
 Norris, Jacqueline  
 Oliver, Douglas



Osborne, Charlie  
 Osborne, Ottis  
 Pace, Eugene  
 Palmer, Mary Kathy



Parido, Arthur Lee  
 Parker, Bert Van  
 Parker, Judith  
 Parrish, Gloria

# JUNIORS

Paynter, Harry  
Pender, Charles  
Perry, William  
Popc, James



Prater, Vivian  
Prince, Patricia  
Prichard, Jimmy  
Puckett, Paul



Puckett, David  
Quisenberry, Linda  
Ragland, Judi  
Rainey, Brenda



Ramsey, George  
Raney, Christine  
Raney, Larry  
Raney, Lisle



Rankin, Mary Allene  
Reed, Della Lee  
Reed, Eddie  
Rees, Mitchell



# CLASS OF '64



Rice, Pat  
Richardson, Barbara  
Richardson, Joe  
Riggs, Roger



Rogers, Frank  
Rogers, Jeff  
Roundtree, Call  
Rupard, James



Schwartz, Susan  
Sewell, Ann  
Scott, Phyllis  
Sharp, Billy



Shelton, Minnie  
Shropshire, Larry  
Shrout, Jo Ann  
Shoemaker, Sally



Skinner, Donald  
Sparks, Linda Lou  
Sparks, Robert  
Stanfield, Diana

# JUNIORS

Stegall, Patricia  
 Stickrod, Mary Ann  
 Stone, Ronald  
 Sumner, Alice



Tapp, Kermit  
 Tate, Mary Frances  
 Taylor, Beverly  
 Taylor, Bill



Taylor, Dudley  
 Thomas, Philip  
 Thompson, Thomas  
 Tupman, Barbara



Turley, Roger  
 Wade, Ann  
 Walden, Shiela  
 Watts, Donnie



Weaver, Anna  
 Welch, Linda  
 Wells, Deanna  
 Whitaker, Russell





# CLASS OF '64



Wiler, Phyllis  
Williams, Eleanor  
Willoughby, Norma  
Winburn, Norma

Woods, Wanda  
Woods, Wilma  
Wootley, Don  
Zak, Brenda

## ABSENT WHEN PICTURES WERE TAKEN:

James Branche  
Brenda Haggins  
Lindwood Howell  
Homer McIntosh  
William Wiseman

Dudley, please don't fall into  
the tree!





Abner, Danny  
 Abshear, John  
 Adams, Imogene  
 Alderman, Libby



Aldridge, Ethel  
 Aldridge, Patricia  
 Ashcraft, Donna  
 Ashcraft, Joe

## SOPHOMORES



Baber, Rondel  
 Baber, Sue  
 Bach, Susan  
 Bailey, Becky  
 Bailey, Edward



Baker, Henry  
 Ballard, Billy  
 Ballard, Cecilia  
 Ballard, Randy  
 Banks, Betty



Banks, Norma  
 Banks, Rufus  
 Barnett, Brenda  
 Barnett, Crystal  
 Barnett, Howard



Berryman, Jim  
 Birch, Danny  
 Blakeimore, Ronnie  
 Blevins, Immy  
 Borders, Faye

Borders, Imogene  
 Bowser, John  
 Boyd, Nancy  
 Britton, Vickie  
 Brock, Sydney



Bronston, Bernetta  
 Brooks, Donna  
 Brown, John  
 Brown, Wanda  
 Browning, David



Burch, Brenda  
 Burgess, Roy  
 Burkhart, Bill  
 Burns, Linda  
 Burrus, Rachel



Bush, Joyce  
 Bush, Polly  
 Campbell, Thelma  
 Carpenter, Sue  
 Carrington, Nancy



## CLASS OF '65

Cartwright, Shirley  
 Case, Howard  
 Chambers, Estella  
 Chenault, Nancy



Chernick, Barbara  
 Childers, Sandra  
 Chism, Imogene  
 Christopher, Barry





Christopher, Carol  
 Christopher, Doug  
 Christy, Jennie  
 Clark, Ann



Clay, Arthur  
 Clay, Sammy  
 Codell, Johanne  
 Cole, Janice

## SOPHOMORES



Collis, James  
 Conkwright, Charlene  
 Conkwright, Jeffrey  
 Conner, Rhoda  
 Cook, James



Coulter, Danny  
 Coyle, Shelby  
 Craycraft, Sue  
 Crigger, Beverly  
 Crum, David



Crouch, Brenda  
 Crowe, Carliss  
 Crowe, Larry  
 Crowe, Linda  
 Cutry, Carol



Curtis, David  
 Curtis, Tommy  
 Dawson, Linda  
 Dearing, Garland  
 Deaton, Mary

Devary, Jimmy  
 Dickson, Mike  
 Dixon, Vinita  
 Eastin, Jennie  
 Edwards, Alice



Elain, Susan  
 Elkin, Jimmy  
 Elkin, Linda  
 Elliot, Wanda  
 Ellis, Linda



Embs, Harold  
 Embs, Wanda  
 Epperson, Linda  
 Epperson, Lucille  
 Estes, Beverly



Estes, Sharon  
 Estes, Vivjan  
 Evans, Ruby  
 Everman, Billy  
 Ewen, Linda



## CLASS OF '65

Faulkner, Barbara  
 Finney, Anna Marie  
 Flynn, Mike  
 Fountain, Donald



Fox, Kent  
 Fraley, Bernard  
 Frye, David  
 Frye, Norman





Gabbard, Carolyn  
 Gay, Donald  
 Gay, Joyce  
 Gay, Shirley



Gibson, Lena  
 Glover, Judy  
 Goodlett, Sandy  
 Greer, Chester

## SOPHOMORES



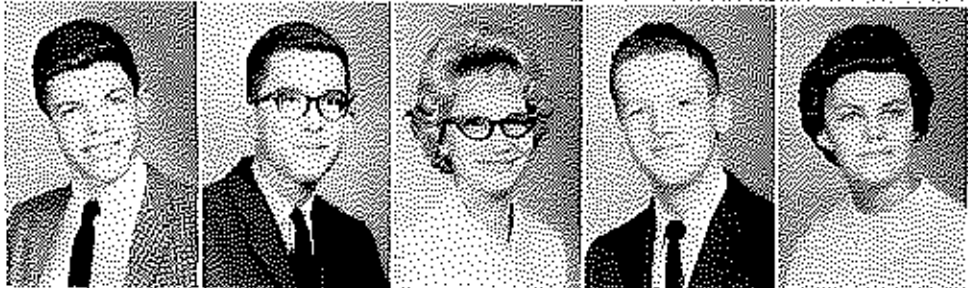
Gullett, Elza  
 Haddix, Dovie  
 Haggard, Peggy  
 Haggard, Sharon  
 Hall, James



Hall, Jo Della  
 Hall, Linda  
 Hamm, O. C.  
 Hammonds, Gary  
 Hampton, Matilda



Harper, Sherry  
 Harris, Janice  
 Hatton, Esther  
 Hatton, Josephine  
 Hatton, Mary Ann



Hazelrigg, Bob  
 Heflin, Clyde  
 Helton, Mattie  
 Hendrixson, Owen  
 Henty, Connie

Henry, Donna  
Hensley, Hunter  
Hill, Gloria  
Hodge, Gary  
Hollon, Brenda



Hollon, Elijah  
Hooten, Jean  
Houtz, Verlene  
Howard, Mary Lee  
Hubbard, Alice



Hudson, Diane  
Huff, Robert  
Humble, Jeanie  
Hunt, Barbara  
Hunt, Tommy



Hunter, Hamp  
Hunter, Hope  
Hurst, Roger  
James, Sharon  
Jefferson, Jennifer



## CLASS OF '65

Johnson, Billy  
Johnson, Carlene  
Johnson, Danny  
Johnson, Eli



Johnson, Louise  
Johnson, Robert Allen  
Johnson, Lonnie  
Jones, Alan





Jones, Bobby  
 Joyce, Bill  
 Judd, Carol  
 Kennedy, William



Kenney, Ollie  
 Kennon, Inza  
 Kidd, Margie  
 Klugore, Phyllis

## SOPHOMORES



King, Doug  
 King, Mary Kay  
 Landrum, Judy  
 Lane, Linda  
 Lavetty, James



Lawrence, David  
 Lawson, Freddie  
 Leath, Wilson  
 Lindsey, Terry  
 Martin, Elda



Martin, Mary Lynn  
 McCamish, Mark  
 McCarty, Gerrie  
 McIntosh, Janice  
 McIntosh, Marie



McKenzie, Sharon  
 McQuinn, Roy  
 Miller, Ernest  
 Mills, Virgie  
 Mills, Wanda



Montgomery, Pam  
 Moore, James  
 Moore, Jimmy  
 Moore, Tommy  
 Morris, Barbara



Morton, Cora  
 Mountz, Sharl  
 Mullins, Alma  
 Myers, Margaret  
 Napier, Mary



Neal, Linda  
 Noland, James  
 Osborne, Donna  
 Osborne, Robert  
 Palmer, David



Palmer, Elaine  
 Pasley, Patricia  
 Patterson, Walter  
 Peltrey, Chuck  
 Peltrey, Terry



## CLASS OF '65

Perick, Keith  
 Pennington, Dewey  
 Perdue, Sandra  
 Perry, Delphis



Perry, Fillmore  
 Peterson, Theresa  
 Pitts, Anna Laura  
 Powers, Janine



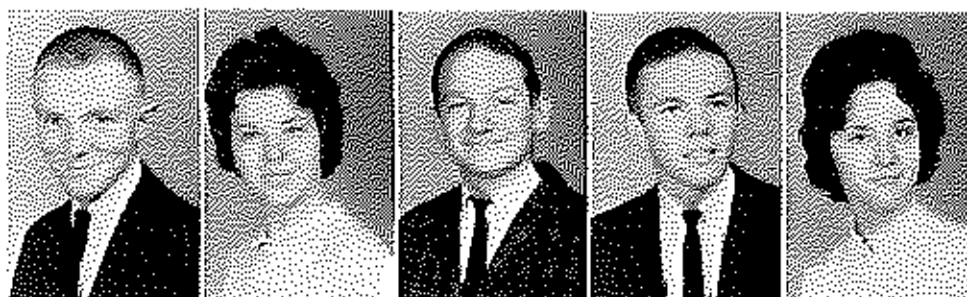


Prater, Wanda  
 Puckett, Barbara  
 Quisenberry, Clark  
 Rader, Bobby



Ralston, Donna  
 Raney, Phyllis  
 Rankin, Russell  
 Rash, Helen Ann

## SOPHOMORES



Reasor, Ross  
 Reddick, Kay  
 Reed, Floyd  
 Rice, Donald  
 Riggs, Linda



Ritchie, Barbara  
 Ritchie, Gene  
 Robinson, Carl  
 Robinson, James  
 Roe, Lynn

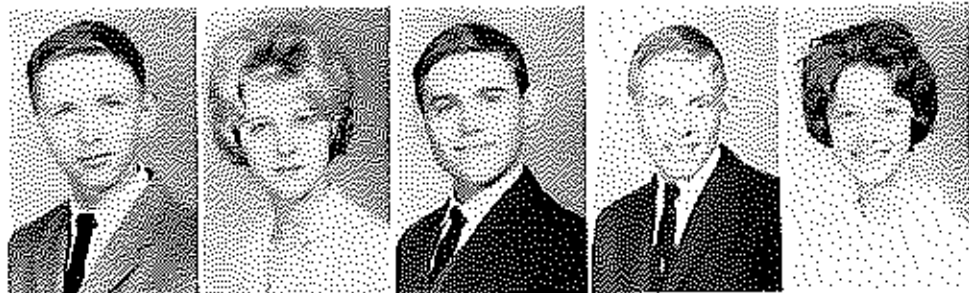


Rosc, Kenneth  
 Rosenthal, Vincent  
 Rowland, Bobby  
 Rowlett, Linda  
 Rupard, Frances



Russell, David  
 Sanders, Eddie  
 Saylor, Judy  
 Scott, Linda  
 Scott, Rosaline

Scribner, Tommy  
 Seager, Janet  
 Segress, Bill  
 Sewell, John  
 Shearer, Sandy



Sheffield, Cecil  
 Sherman, Robert  
 Shroust, Rose Linda  
 Sidwell, Paul  
 Skinner, Henrietta



Skinner, Richard  
 Smart, Frank  
 South, Donald  
 South, Gene  
 Smith, Hattie

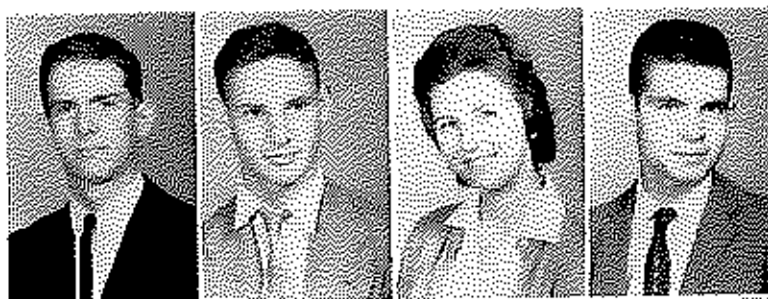


Smith, James  
 Smith, June  
 Smith, Linda  
 Smith, Rita  
 Smith, Sheila



## CLASS OF '65

Snowden, Mike  
 Snowden, Shirlee  
 Spencer, Sharon  
 Spicer, Cecil



Spicer, Clarence  
 Stanfield, Janice  
 Stanfield, Larry  
 Stanfield, Lellie





Stanley, Dixie  
Stevenson, Paul  
Sullivan, Donna  
Taulbee, Danny



Taulbee, Geraldine  
Thaxton, Carolyn  
Thomas, Anna  
Thomas, Linda

## SOPHOMORES



Thomas, Sharon  
Tischer, Johnny  
Toler, Lana  
Toler, Sharon  
True, Randall



True, Susan  
Turner, Margaret  
Van Dyke, Judy  
Van Hoose, Clyde  
Van Hooser, Larry



Walters, Linda  
Walters, Shelby  
Wasson, Lois  
Watts, Charles  
Welch, Nancy



Welch, Terry  
Wells, Beverly  
Wells, Lloyd  
Wheeler, Ricky  
Whisman, Dwight

Whitaker, Roland  
 White, Ava  
 White, Judy  
 Williams, John  
 Willoughby, Barbara



Wills, Lloyd  
 Wilson, Jerry  
 Wilson, Nancy  
 Wiseman, Markie  
 Witt, Billy



Witt, Nancy  
 Woods, Janet  
 Wright, Julie  
 Wyatt, Roy  
 Young, Anna

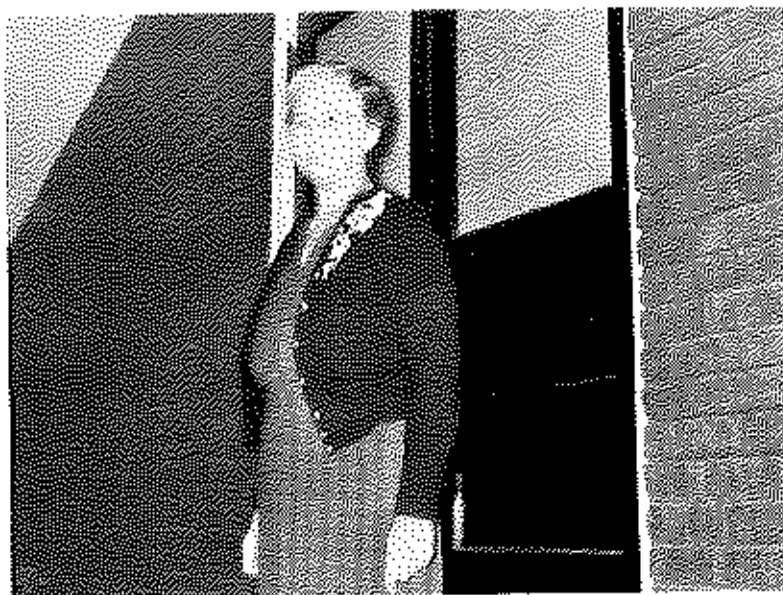


Young, Elizabeth



ABSENT WHEN PICTURES WERE TAKEN:

- Sonny Adams
- Charles Bond
- Jane Burnam
- Jo Nell Jacob
- Loretta Layne
- Larry McCord
- Ilean Murrile
- Sue Richardson
- Billy Trusty
- Rachel Walters
- Raymond Willoughby



Miss Haggard is standing guard . . .

Abbott, John  
 Abner, Brenda  
 Abner, Joyce  
 Abney, Marilyn  
 Abney, Sue



Adams, Bobby  
 Alford, Betty  
 Allen, Penny  
 Allen, Peggy  
 Alman, Joanie



Amburgey, Linda  
 Anderson, Claudette  
 Anes, Mike  
 Ashcraft, Harold  
 Austin, Virgil



## FRESHMAN CLASS



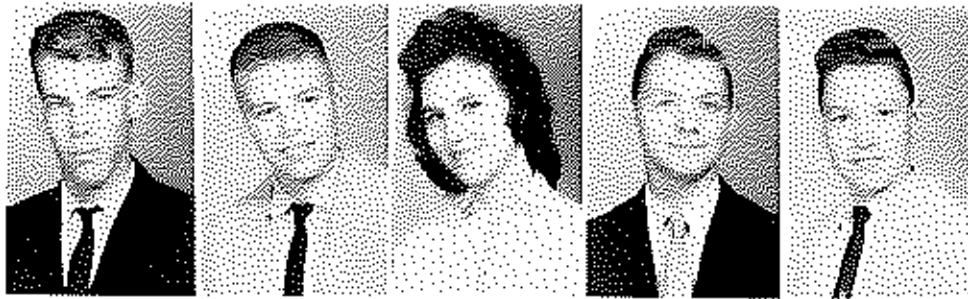
Avent, Ann  
 Averitt, Jane  
 Babb, Archie  
 Baber, Jerry  
 Bailey, Gayle  
 Baker, Monte



Baker, Nancy  
 Baker, Robert  
 Ballard, Linda  
 Barnett, Billy  
 Barnett, Donald  
 Barnett, Ruth



Bell, Ronald  
 Berryman, Claudette  
 Birch, Darlene  
 Bishop, Kathy  
 Blakemore, Stella  
 Blankenship, Terry



Blanton, William  
 Border, Charles  
 Bowling, Sue  
 Brady, Donald  
 Brake, Ray



Branham, Clyde  
 Brantly, Rita  
 Brassfield, Carol  
 Brinegar, Bertha  
 Brock, Zella



Brown, Bobby  
 Brown, Emma  
 Brown, Walter  
 Burkhead, Don  
 Caudill, Frank

## FRESHMAN CLASS

Caudill, Janice  
 Center, Linda  
 Chancy, Oren  
 Chism, Brenda  
 Chism, Donna  
 Chism, Linda



Christopher, Cecil  
 Christopher, John  
 Clark, Anna  
 Clem, Betty  
 Clem, Beverly  
 Clemons, Janet



Cole, Gilliam  
 Combs, Kenneth  
 Combs, Lynda  
 Conner, Archie  
 Cornett, Richard  
 Cottengim, David



Cowee, Teresa  
 Craycraft, David  
 Crouch, Pam  
 Crowe, Glenn  
 Crowe, Wilma



Cruse, Brenda  
 Cruse, Elizabeth  
 Cruse, Lee  
 Curtis, Beverly  
 Curtis, Linda



Dafley, Doris Sue  
 Davis, Linda  
 Davis, Ronald  
 Dearing, Carol  
 Dearing, Garland



## CLASS OF '66



Devary, Dan  
 Dixon, Eugene  
 Duff, Bonnie  
 Duff, Peggy  
 Durbin, Vicki  
 Eades, Leatta



Elliott, Dale  
 Emanuel, Joel  
 Embry, Charles  
 Epley, Steve  
 Estes, Bonnie  
 Estes, Carlene



Evans, Dononetta  
 Fallen, Brenda  
 Farmer, Bill  
 Farmer, Debby  
 Faulkner, Harold  
 Faulkner, Joyce





Faulkner, Sharon  
Fisher, Wayne  
Follick, Barbara  
Fox, Margaret  
Frazier, Myra



Fritts, Phyllis Ann  
Frye, Linville  
Fuller, Donna  
Gabbard, Charlotte  
Garland, Lynn



Gatewood, Milton  
Gilvin, Eddie  
Ginter, Gary  
Ginter, Johnny  
Gentry, William

## FRESHMAN CLASS

Gough, Carl  
Gravett, Betty  
Gray, Larry  
Gross, Mary  
Gypson, Josephine  
Hackett, Ruth



Hager, Jimmy  
Hager, Willis  
Haggard, Belvin  
Haggard, Dorothy  
Haggard, James  
Hall, Houston



Hall, Lewis  
Hall, Mary Sue  
Hampton, Anna  
Hampton, Reed  
Hampton, Shella  
Harris, Janice



Harrison, Linda  
 Hastie, Connie  
 Hatton, Pamela  
 Hatton, Patricia  
 Hatton, Ronald



Hatton, Ruth  
 Hawkins, David  
 Hay, Paul  
 Haynes, Dana  
 Hendrixson, Marilyn



Herald, Carol Ann  
 Hisle, Rodney  
 Hobbs, DeEtta  
 Hobbs, Greg  
 Hodge, Gordon



## CLASS OF '66



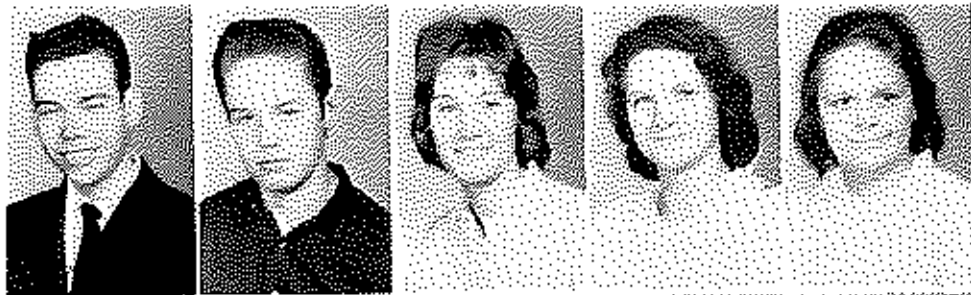
Hogan, Diane  
 Hollon, Danny  
 Hollon, Alice  
 Hopper, Wanda  
 Hopper, Wayne  
 Horton, Tom



Howard, Linda  
 Howard, Marjorie  
 Hukle, Patricia  
 Hunt, Ronnie  
 Hyatt, Betty  
 Ingram, David



Ingram, Margie  
 Jordan, George  
 Jordan, Melvin  
 Jones, Robert  
 Jones, Ricky  
 Jones, Bobby Jean



Jackson, Charles  
 Jackson, Charles J.  
 Jacob, Linda  
 Jarnan, Judy  
 Jarnan, Mildred



Johnson, Diana  
 Johnson, Eugene  
 Johnson, John  
 Johnson, Patricia  
 Jones, Barbara



Kennon, Jimmy  
 Kennon, Vada  
 Kincaid, Craig  
 Kindler, Robert  
 King, Gene

## FRESHMAN CLASS

King, Paul  
 Kimbrell, Valerie  
 Lake, Mary Gail  
 Lawrence, Judy  
 Lee, Grace  
 Lee, Janet



Lightner, Mike  
 Little, Bobby  
 Little, Danny  
 Lockman, Carol  
 Lowe, Mike  
 Lutes, Judy



Mack, Barbara  
 Mack, Jerry Lee  
 Mack, Sylvia  
 Maines, Mary Lee  
 Manuel, Bobby  
 Marrs, Sandra



Marsh, Martha  
 Martin, Carol  
 Martin, Marcia  
 Martin, Pat  
 Martin, Paul



Martin, Sharon  
 Masters, Billy  
 Mays, Wanda  
 Miller, Deborah  
 Miller, Jewell



Mitchell, Gil  
 McClintock, Marsha  
 McDonald, Peggy  
 McFarland, Clarence  
 McIntosh, Harold



## CLASS OF '66



McIntosh, Isabell  
 McNabb, Don  
 McVey, Sue  
 Moberly, Lonnie  
 Morton, Carrie  
 Moyers, David



Myers, Joe  
 Mynhier, Carolyn  
 Murphy, Sue  
 Neal, Don  
 Neal, Mary Jane  
 Neff, Sandy



Nesbitt, Mike  
 Nilhas, Sandra  
 Norris, Doris  
 Norton, Nancy  
 Nunn, Sue  
 Oakley, Phillip



Osborne, Paul  
Osborne, Sara  
Palmer, Linda  
Parido, Richard  
Parke, Ken



Parrish, Steve  
Parlu, Diana  
Patrick, Naomil  
Patton, Gary  
Patton, Jon



Patton, Stanley  
Pelfrey, Billy  
Perry, Ellery  
Perry, Nancy  
Perry, Rosetta

## FRESHMAN CLASS

Peyton, Gordon  
Planck, Allen  
Potter, Carolyn  
Powell, Herbert  
Pritchard, Detoris  
Proffitt, Mary



Puckett, Darlene  
Puckett, Earl  
Quinn, Judy  
Ramsey, Billy  
Raney, Brenda  
Raney, James



Raney, Sandra  
Rankin, Connie  
Rankin, Della  
Rector, Billy  
Redmond, David  
Redwine, David



Reed, Molly Ann  
Rees, Marjorie  
Richardson, Tommy  
Ritchie, Donnie  
Ritchie, Joyce



Ritchie, Roger  
Rorpe, Terry  
Rose, Gordon  
Rose, Jo Ann  
Sampson, Ernest



Saylor, Peggy  
Scott, Diane  
Scott, Jimmy  
Sebastin, George  
Shearer, Bonnie



## CLASS OF '66



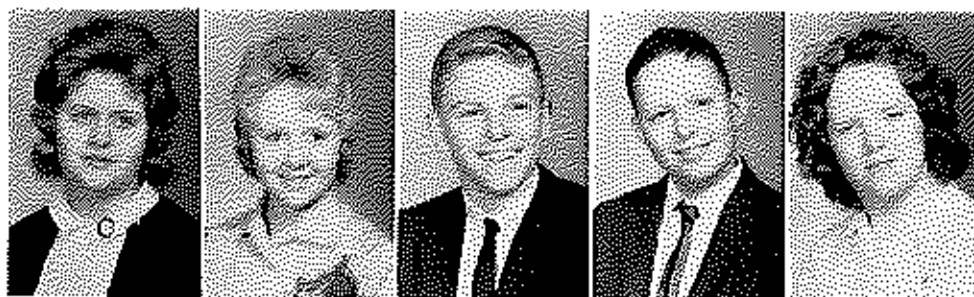
Sherman, Larry  
Shrout, Janet  
Shrout, Wanda  
Stimpson, Sharla  
Smith, Brenda  
Smith, Janice



Smith, Steve  
Snapp, Jimmy  
Snapp, Linda  
Snapp, Randy  
Snowden, Patsy  
Snowden, Maxine



Spencer, Cheryl  
Sphar, Martha  
Sprinkle, Joyce  
Stacy, Bill  
Stanfield, Carol  
Stevenson, Danny



Stokley, Kathy  
 Stone, Brenda  
 Stotts, John  
 Talbott, Steve  
 Tap, Betty



Taulbee, Janice  
 Taulbee, Shirley  
 Taylor, Janis  
 Taylor, Leonard  
 Terrell, Tommy



Thomas, Billie Jean  
 Tipton, Fannie  
 Todd, Steve  
 Tokson, Belinda  
 Tyler, Kenneth

## FRESHMAN CLASS

Wagers, Gardner  
 Wallen, Mike  
 Warner, Priscilla  
 Wasson, Brenda  
 Wasson, Deloris  
 Wasson, Lonzo



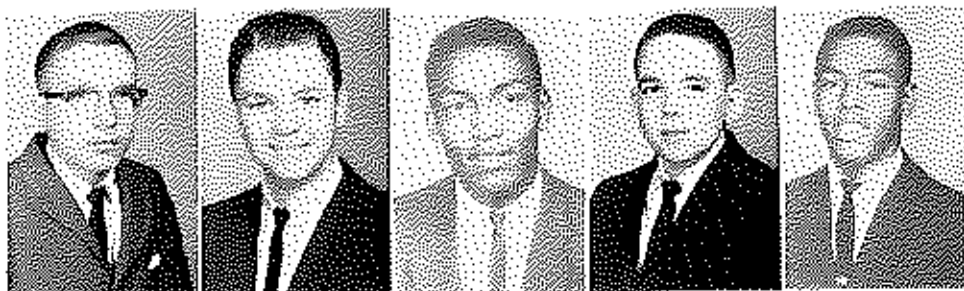
Watts, Brenda  
 Watts, Donna  
 Wedding, Phyllis  
 Wells, Earl  
 Wells, Terry  
 Whitaker, Pat



White, Gilbert  
 White, Linda  
 White, Opal  
 White, William  
 Whitman, Ralph  
 Whitlock, Barry



Williams, Gilbert  
 Williams, Joe  
 Williams, John  
 Williams, Mike  
 Williams, Robert



Willoughby, Gloria  
 Willoughby, Linda  
 Willoughby, Shirley  
 Wills, Linda  
 Wilson, Edmund



Wilson, Russell  
 Wise, Susan  
 Wiseman, Bonnie  
 Withers, Tommy  
 Witt, Linda



Woolwine, Robert  
 Woosley, Clarence  
 Wyatt, Alice  
 Yeary, Dickie  
 Zachry, Cam



ABSENT WHEN PICTURES WERE TAKEN:

- Frank Dubuy
- Diane Johnson
- Saundra Nilhas
- Betty Joe Stone
- Ruth Whitaker

